

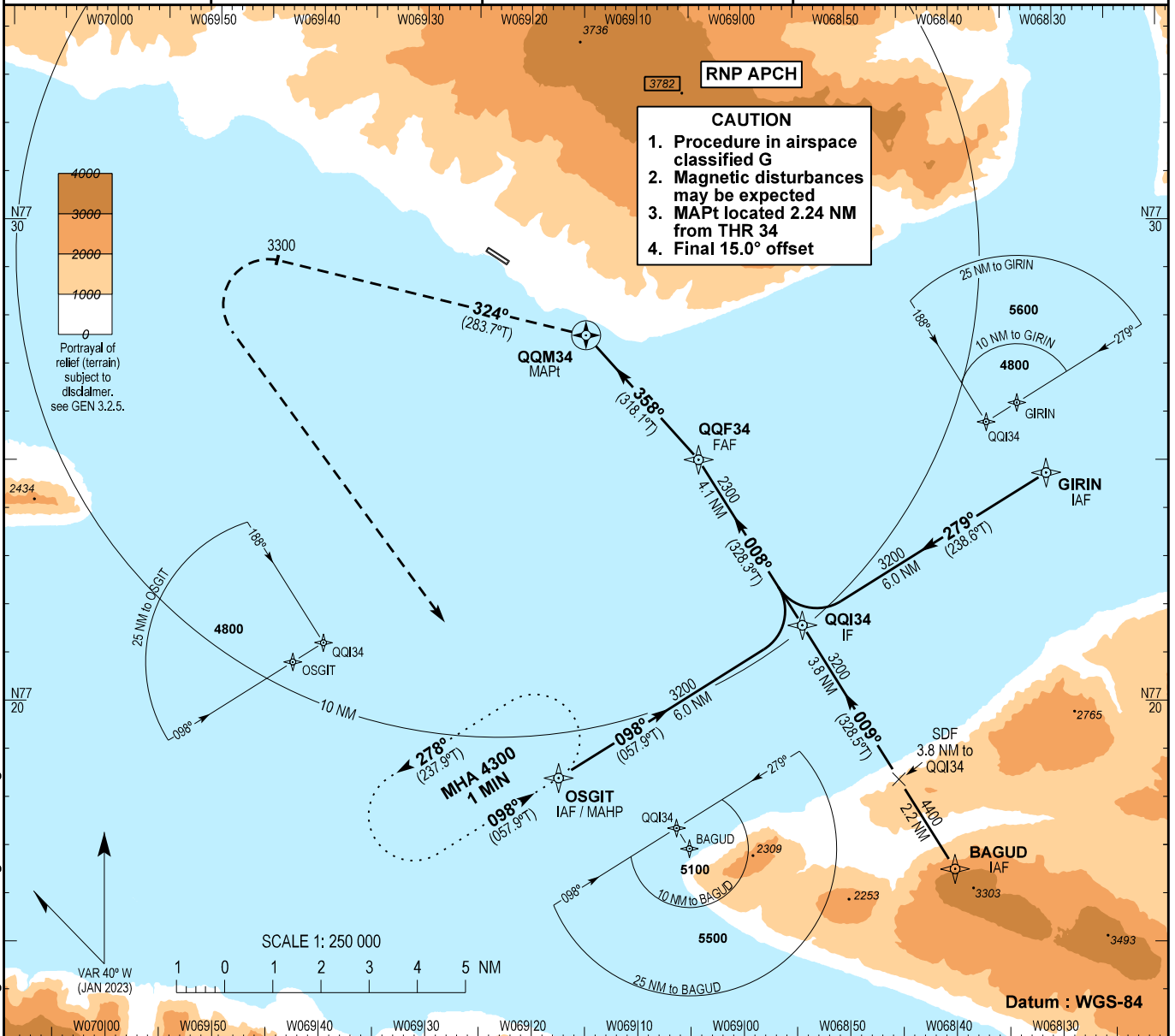
INSTRUMENT APPROACH CHART - ICAO

AD ELEV : 51

Bearings are magnetic (true)
ELEV, ALT and HGT in FT

Qaanaaq AFIS : 118.100

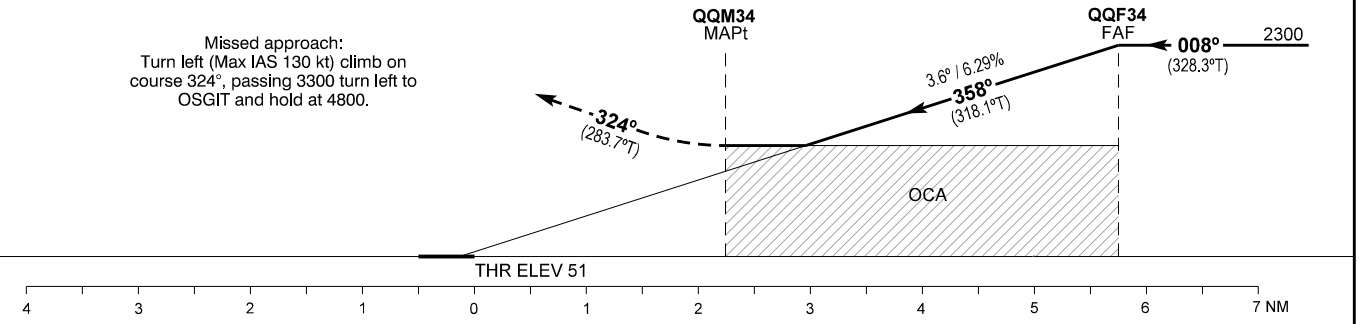
AD 2 - BGQQ
RNP RWY 34 - 1
Qaanaaq



Changes : VAR and MAG bearings changed. WP names changed. Chart designator changed.

TA 6500

Missed approach:
Turn left (Max IAS 130 kt) climb on
course 324°, passing 3300 turn left to
OSGIT and hold at 4800.



OCA (H)		A	B	Remarks		
LNAV	Climb 2.5%	1240 (1189)	1320 (1269)			
	Climb 4.0%	1210 (1159)	1250 (1199)			
Circling*		1210 (1159)	1250 (1199)	*West of aerodrome only		
Time from QQF34 to QQM34 - DIST 3.5 NM**						
GS	KT	80	100	120	140	160
Time	MIN:SEC	2:37	2:06	1:45	1:30	1:19
ROD 3.6° / 6.29%	FT/MIN	510	640	760	890	1020

DIST to QQM34 NM	1.0	2.0	3.0
Altitude 3.6° Descent	1340	1730	2110

**Timing not authorized for defining the MAPt