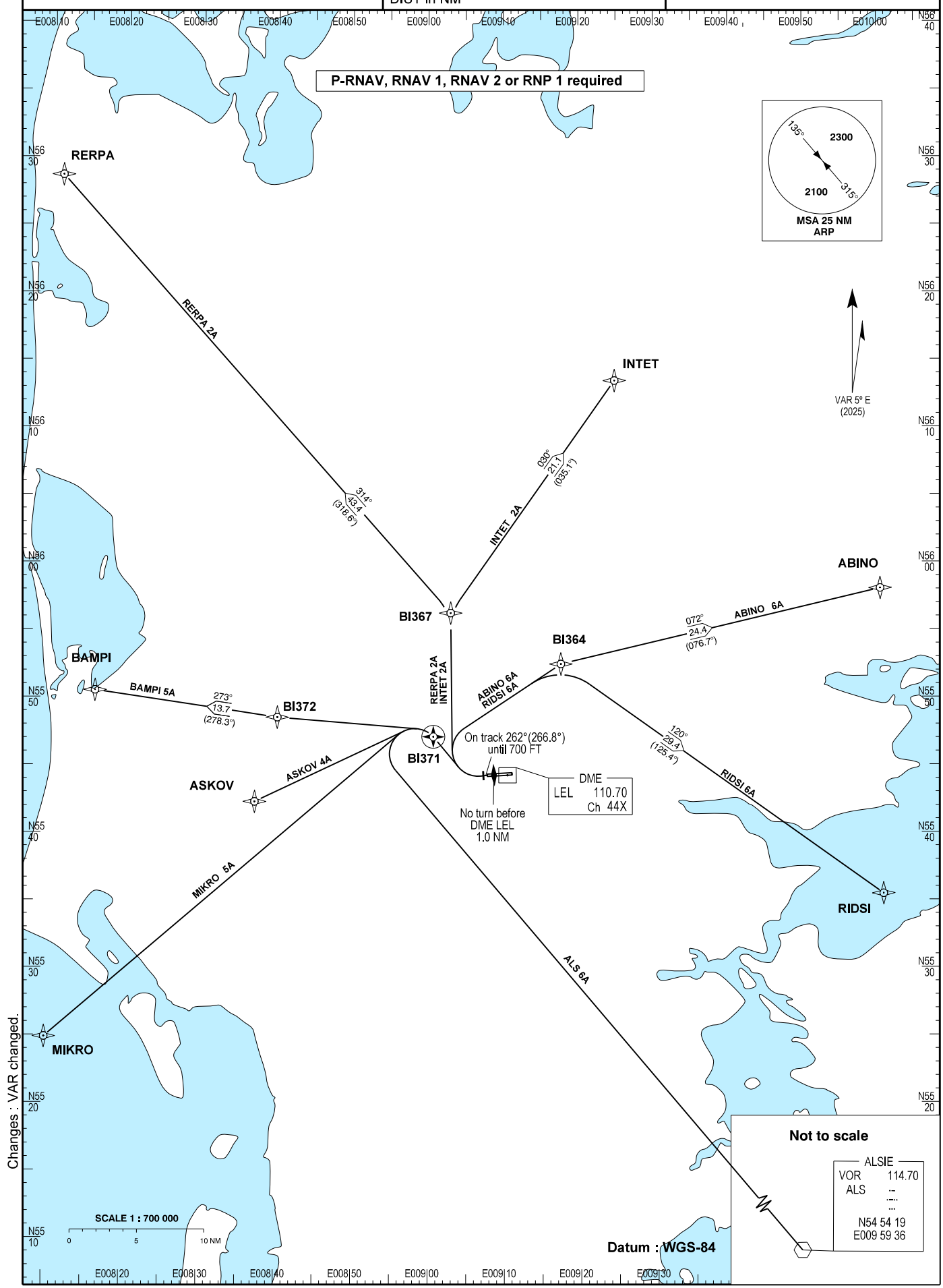
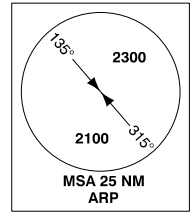


STANDARD DEPARTURE CHART - INSTRUMENT (SID) - ICAO

Transition altitude : 3000
 Bearings are magnetic (true)
 ELEV / ALT in FT
 DIST in NM

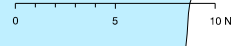
AD 2 - EKBI
 SID (P-RNAV) RWY 27 - 1
 Billund

P-RNAV, RNAV 1, RNAV 2 or RNP 1 required



Changes : VAR changed.

SCALE 1 : 700 000



Datum : WGS-84

Not to scale

ALSIE	114.70
VOR	...
ALS	...
N54 54 19	
E009 59 36	