

STANDARD DEPARTURE CHART - INSTRUMENT (SID) - ICAO

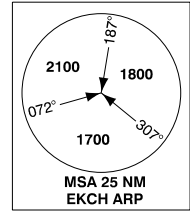
Transition altitude 5000
 Bearings are magnetic (true)
 ELEV / ALT in FT
 DIST in NM

AD 2 - EKCH
RNAV SID RWY 22 L - 1
København / Kastrup
 BETUD 2F, NEXEN 2F, KOPEX 2F, LANGO 2F, ODDON 1F
 GOLGA 2F, VEDAR 2F, KEMAX 2F, SIMEG 2F, SALLO 1F

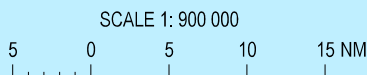
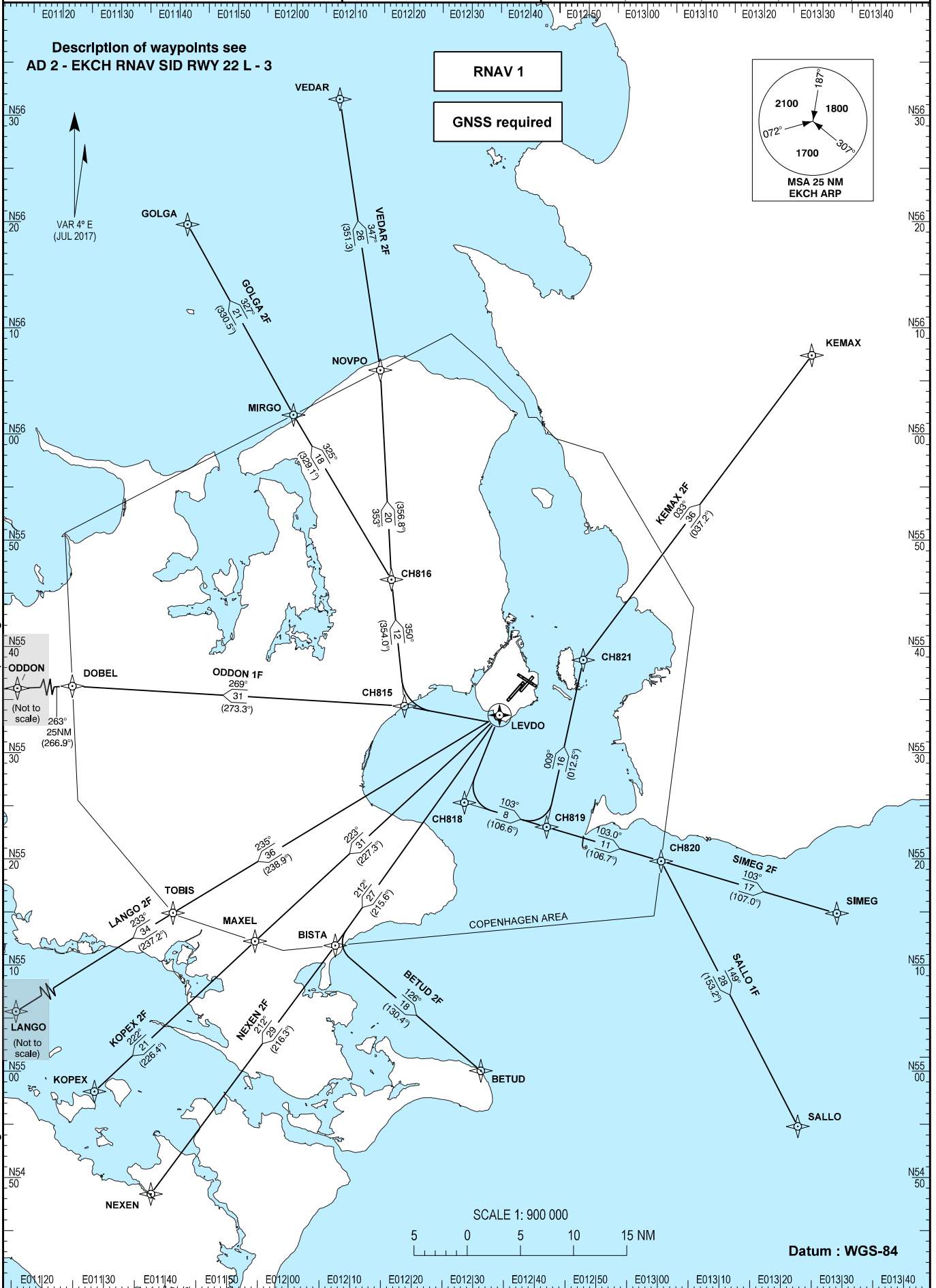
Description of waypoints see
 AD 2 - EKCH RNAV SID RWY 22 L - 3

RNAV 1

GNSS required



Changes: ODN VOR and ODN 2F withdrawn, WPT ODDON, ODDON 1F and Copenhagen Area added.



Datum : WGS-84