

Aerodrome Chart - EKRK

København / Roskilde

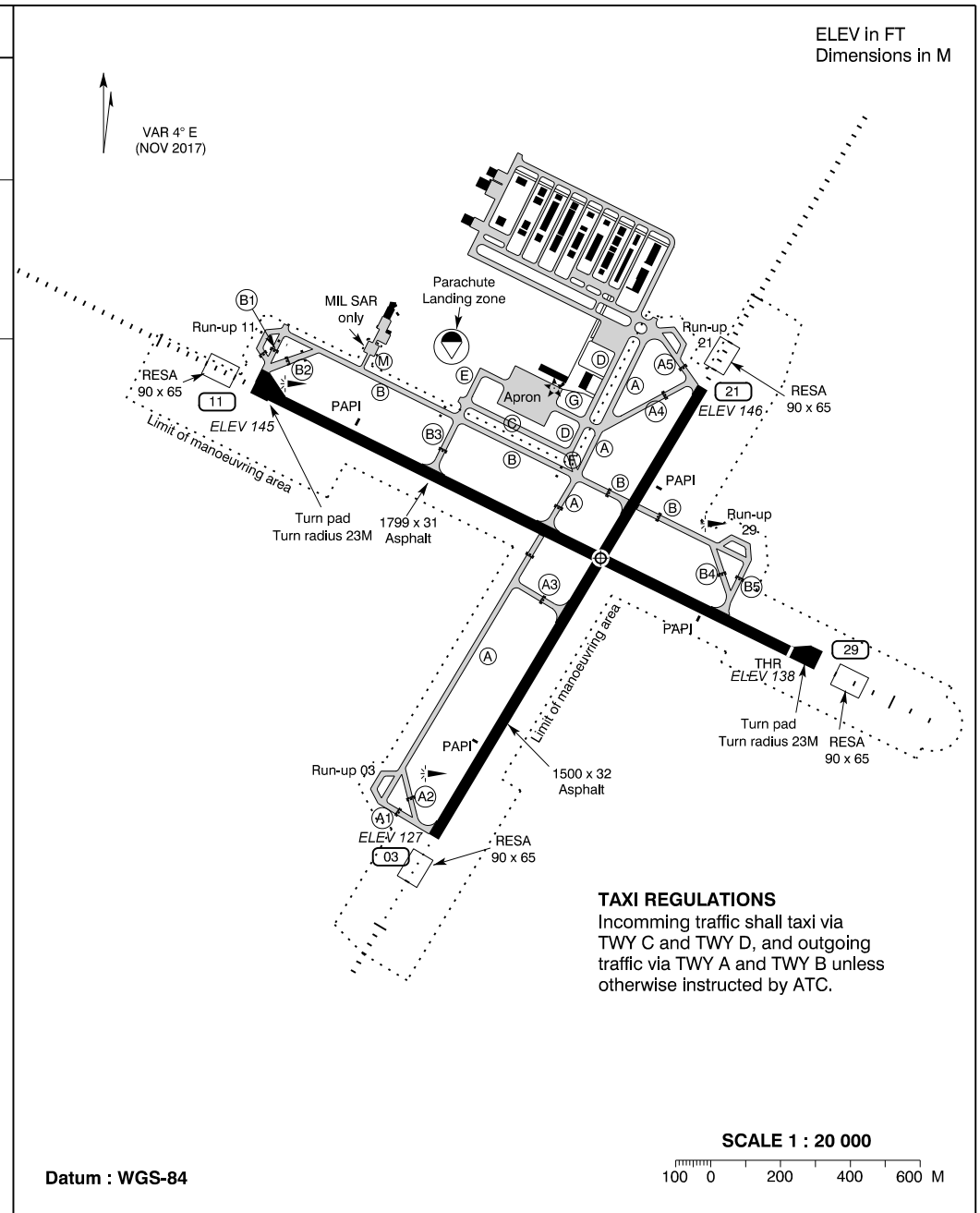
RWY	Direction	THR PSN	PSN TWY	TORA	TODA	ASDA	LDA	Strength
03	030.9° GEO 026.9° MAG	55 34 42.25N 012 07 25.85E	A1/A2 A3	1500 760	1500 760	1500 760	1500	PCN 30 F / C / X / T
21	210.9° GEO 206.9° MAG	55 35 23.85N 012 08 09.85E	A4/A5 B	1500 1120	1500 1120	1500 1120	1500	
11	116.3° GEO 112.3° MAG	55 35 23.93N 012 06 56.30E	B1/B2 B3 A	1740 1180 800	1740 1180 800	1799 1239 859	1740	PCN 36 F / C / X / T
29	296.3° GEO 292.3° MAG	55 34 59.03N 012 08 25.39E	B4/B5 A	1799 1500 940	1799 1500 940	1799 1500 940	1740	

RWY day marking : THR, RWY NR, TDZ 11, TDZ 21, Centre line, Edge.
 Lighting RWY 03/21 : PAPI, ALS, THR, Edge, End.
 Lighting RWY 11/29 : PAPI, ALS, THR ID 29, THR, Edge, End.
 Secondary power supply : Yes, switch-over time 15 SEC. All OBST are marked by day and night.

TAXIWAYS
 Width : M : 9 Other : 15
 Pavement : Asphalt
 Strength : B, B3, E and turning area at RWY 29/11 : PCN 36 / F / C / X / U.
 C : PCN 14 / F / C / Y / U.
 Other TWY : PCN 17 / F / C / Y / U.

Day marking : Centre line, Holding position, Intermediate holding position and Edge on Turning areas RWY 29 and 11.
 Lighting : Blue edge. RGL.
 Turning area RWY 29 : Blue edge LIL.
 Turning area RWY 11 : Blue edge LIL

RWY slopes : Less than 0.4 %.



Changes : LDA RWY 11 corrected.

TAXI REGULATIONS
 Incomming traffic shall taxi via TWY C and TWY D, and outgoing traffic via TWY A and TWY B unless otherwise instructed by ATC.