

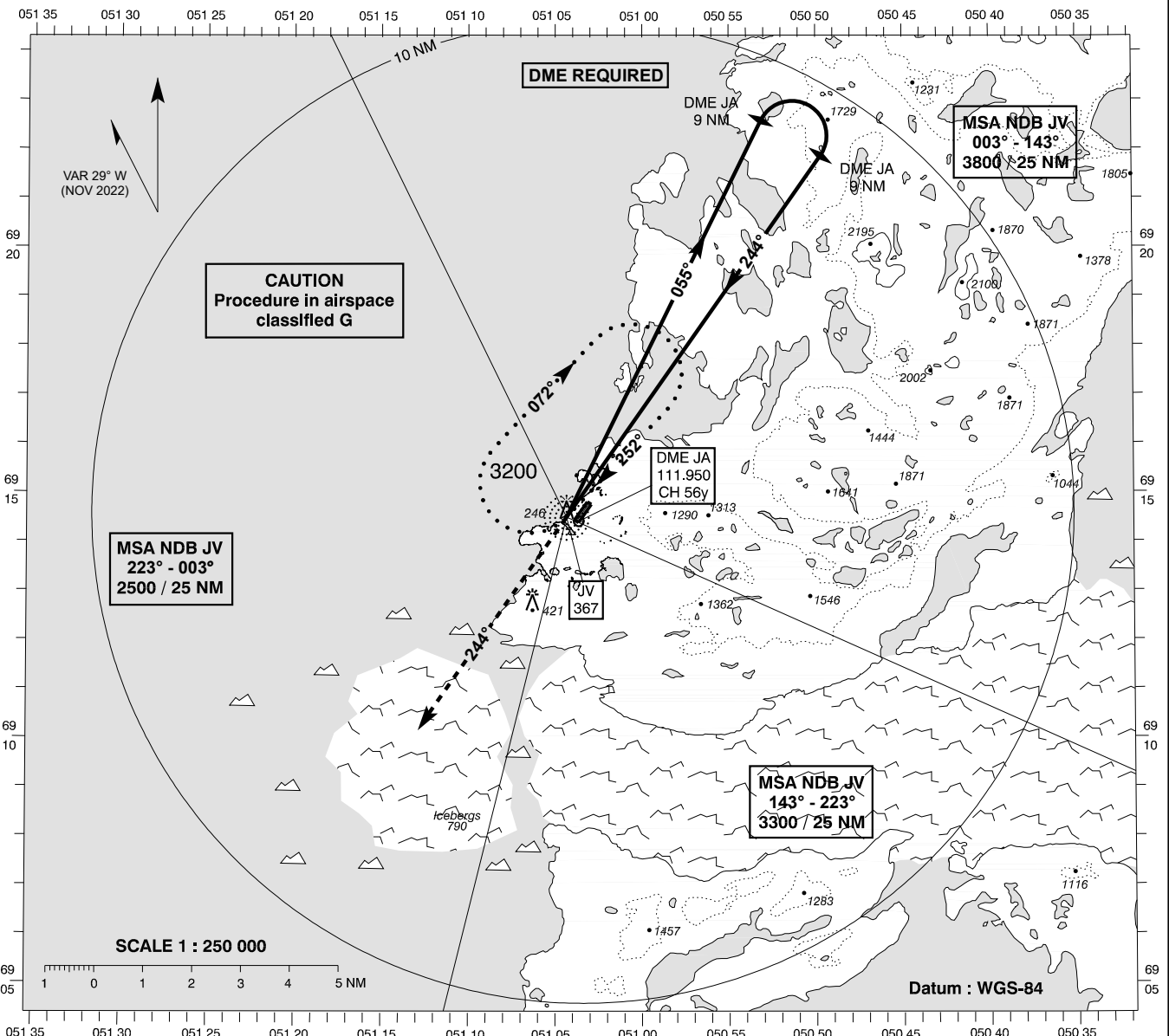
**INSTRUMENT APPROACH CHART - ICAO**

AD ELEV : 95

Bearings are magnetic  
ELEV, ALT and HGT in FT

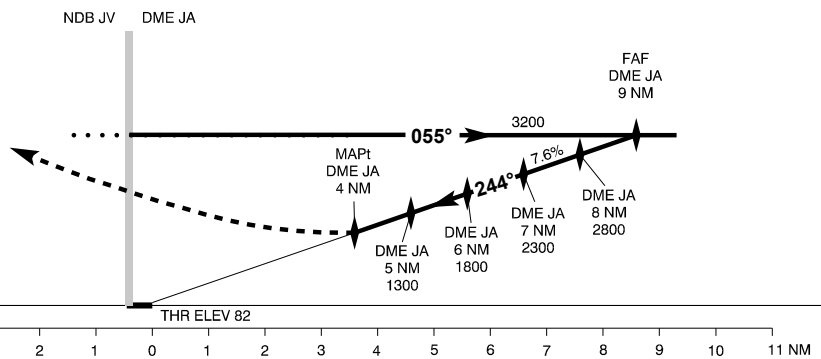
Ilulissat AFIS : 119,100

**AD 2 - BGJN  
NDB RWY 24  
Ilulissat**



**TA 6000**

Missed Approach :  
At DME JA 4 NM climb  
straight ahead to 3200.  
Then right turn back to  
JV HLDG.  
MNM missed APCH climb  
gradient 4%.



OCA (H)	A	B	SPECIAL CONDITIONS							
NDB	880 (800)	880 (800)	Pass not below altitudes shown in profile.							
Circling *	1100 (1010)	1100 (1010)	* N of RWY only							
DME JA	NM	1	2	3	4	5	6	7	8	9
DIST to THR	NM	0.5	1.5	2.5	3.5	4.5	5.5	6.5	7.5	8.5
ALT				880	1300	1800	2300	2800	3200	

Changes: VAR and MAG bearings changed. Chart designator changed from NDB+DME 25 to NDB RWY 24. Note "DME REQUIRED" added.