

INSTRUMENT APPROACH CHART - ICAO

AD ELEV : 82

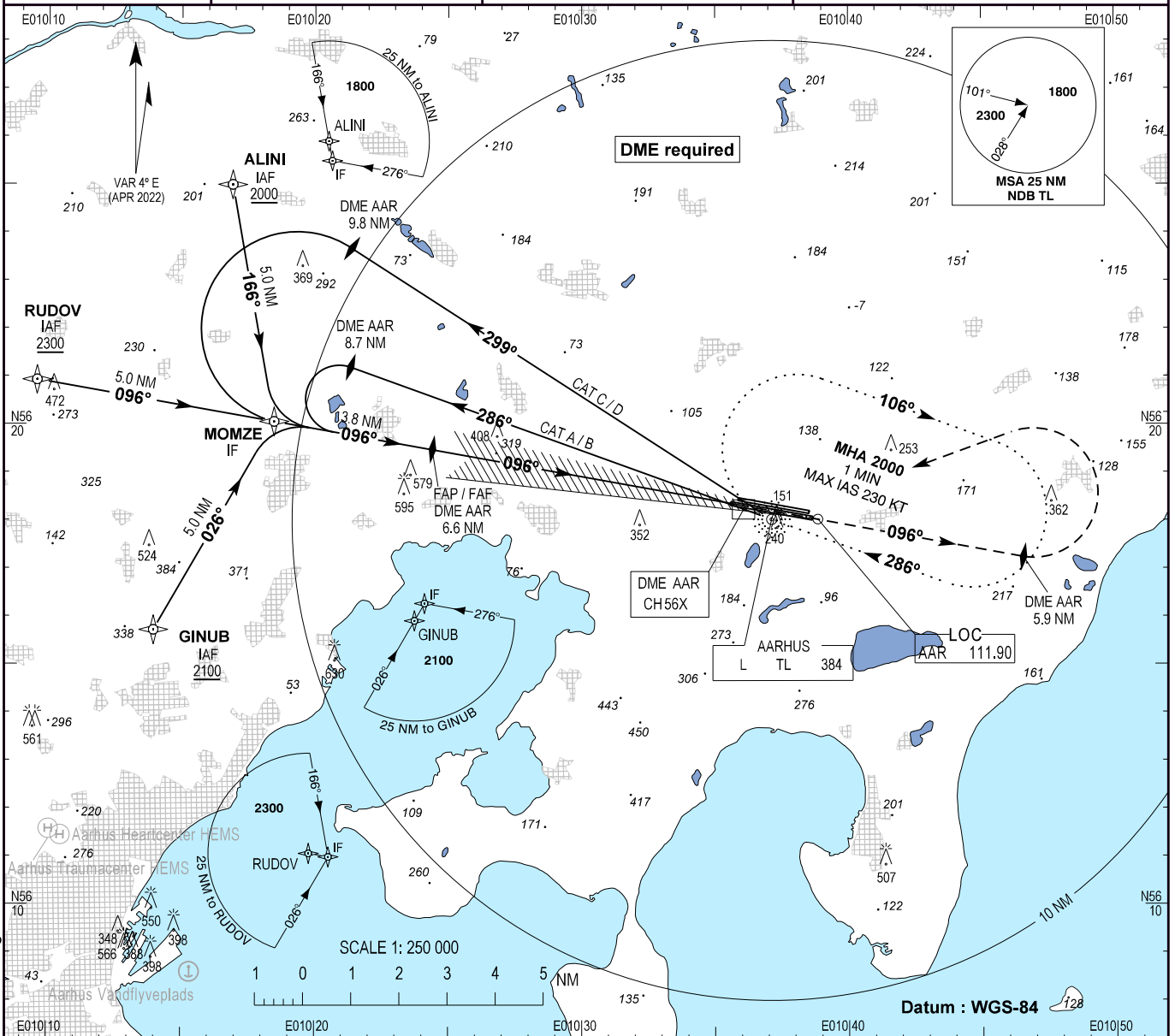
Bearings are magnetic
ELEV, ALT and HGT in FT

Aarhus APP : 119.280

Aarhus TWR : 118.530

ATIS : 125.155

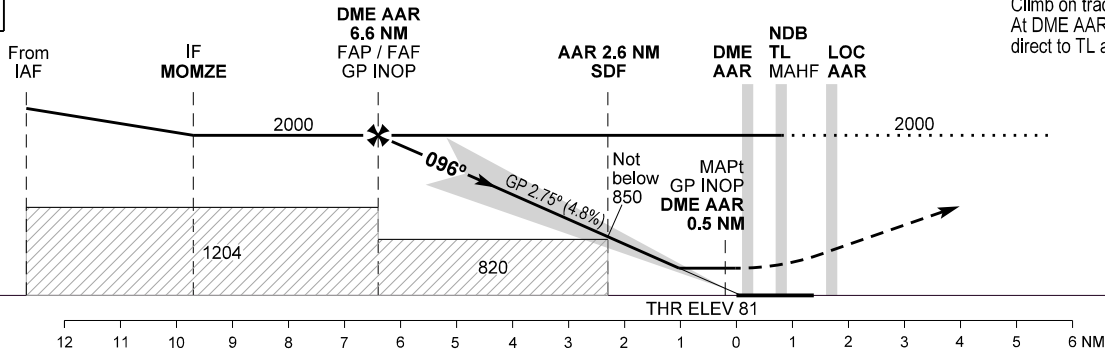
AD 2 - EKAH
ILS RWY 10R
Aarhus



Changes : OBST Aarhus, MindeT kran 566 FT added, Editorial change.

TA 3000
RDH 34

Missed approach:
Climb on track 096° to 2000.
At DME AAR 5.9 NM turn left
direct to TL and hold.



OCA (H)	A	B	C	D
ILS	216 (135)	223 (142)	233 (152)	242 (161)
GP INOP*	480 (400)	480 (400)	480 (400)	480 (400)
Circling	570 (490)	680 (600)	1060 (980)	1180 (1100)

*Cross DME AAR 2.6 NM not below 850

Timing not authorized for defining MAPt.

DME AAR	NM	6	5	4	3	2	1
DIST to THR	NM	5.86	4.86	3.86	2.86	1.86	0.86
ALT		1840	1550	1260	965	675	385

NAVIAR

AIRAC AMDT 07/25 - 10 JUL 25