

INSTRUMENT APPROACH CHART - ICAO

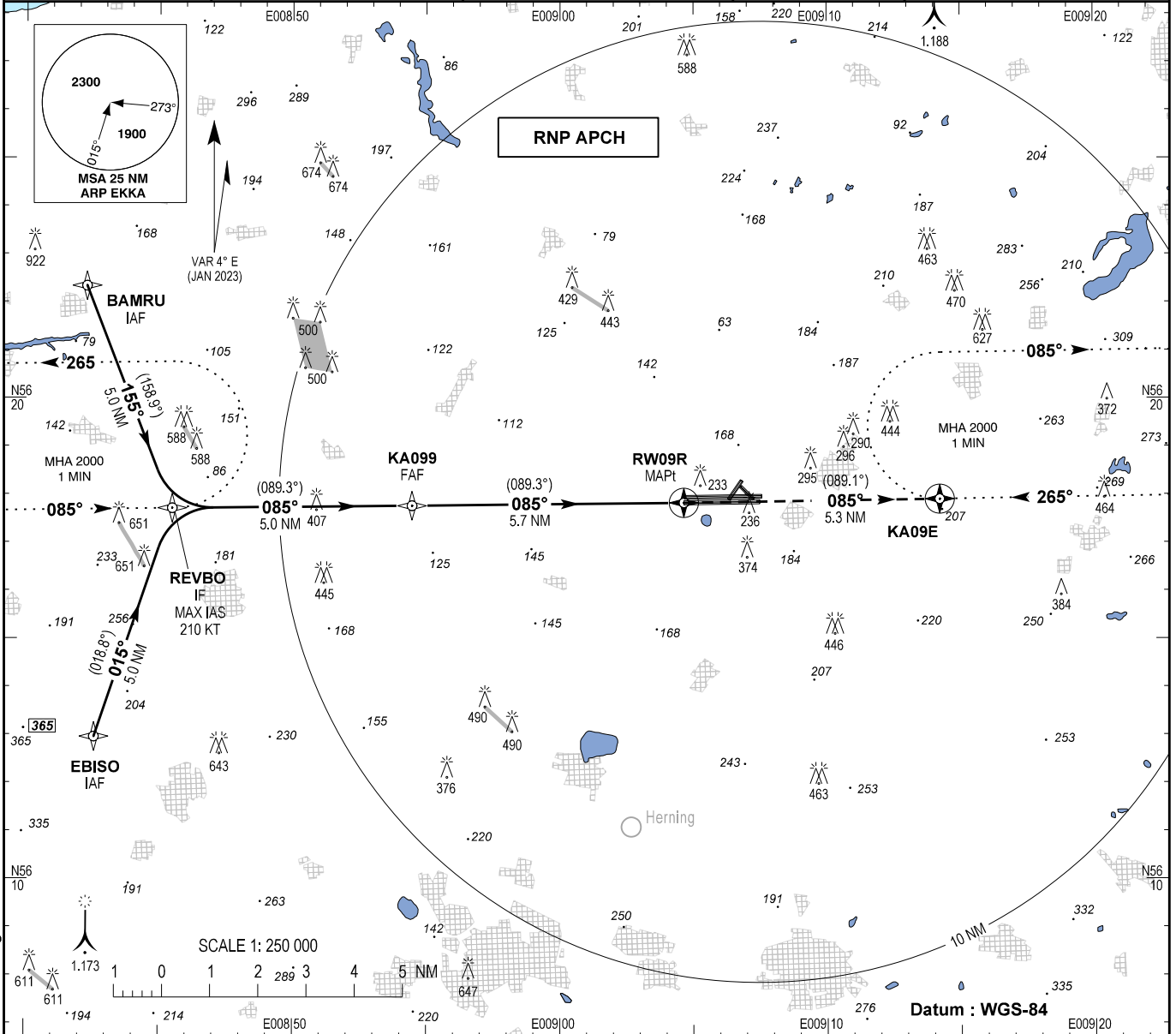
AD ELEV : 171

Bearings are magnetic (True)
ELEV, ALT and HGT in FT

Karup APP : 120.430 269.275
Karup TWR : 119.580 353.575
ATIS : 120.580 257.800

EGNOS Channel :
46175

AD 2 - EKKA
RNP RWY 09R - 1
(MIL AD, PPR)
Karup / Midtjyllands Lufthavn

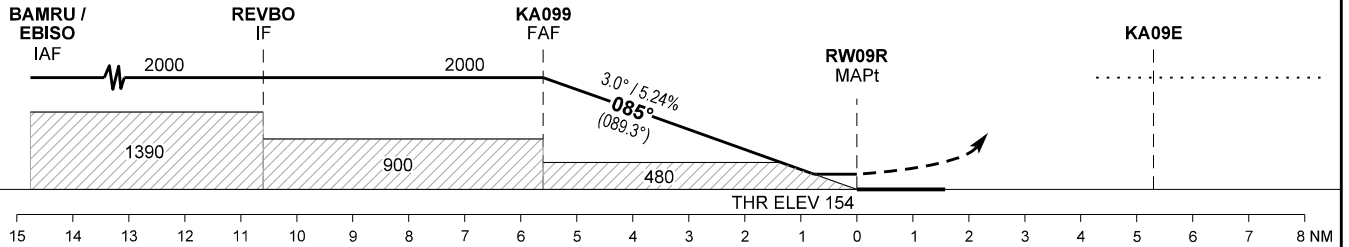


Changes : Magnetic variation and directions changed. Editorial changes.

TA 3000
TCH 41.5

Missed approach :
Climb on track to overfly KA09E
and hold at 2000 FT.

RW09R - KA09E (A2000+, HM)



OCA (H)	A	B	C	D
LPV	337 (183)	349 (195)	357 (203)	368 (214)
LNAV/VNAV*	400 (250)	400 (250)	400 (250)	400 (250)
LNAV**	490 (340)	490 (340)	490 (340)	490 (340)
Circling	670 (500)	820 (650)	1060 (890)	1060 (890)

DIST to RW09R	1	2	3	4	5
Nominal Altitude	520	830	1150	1470	1790

SPECIAL CONDITIONS

* Not to be used below -25°C
** Timing not authorized for defining MAPt

PAPI 3.0° - not aligned with instrument procedure vertical path