

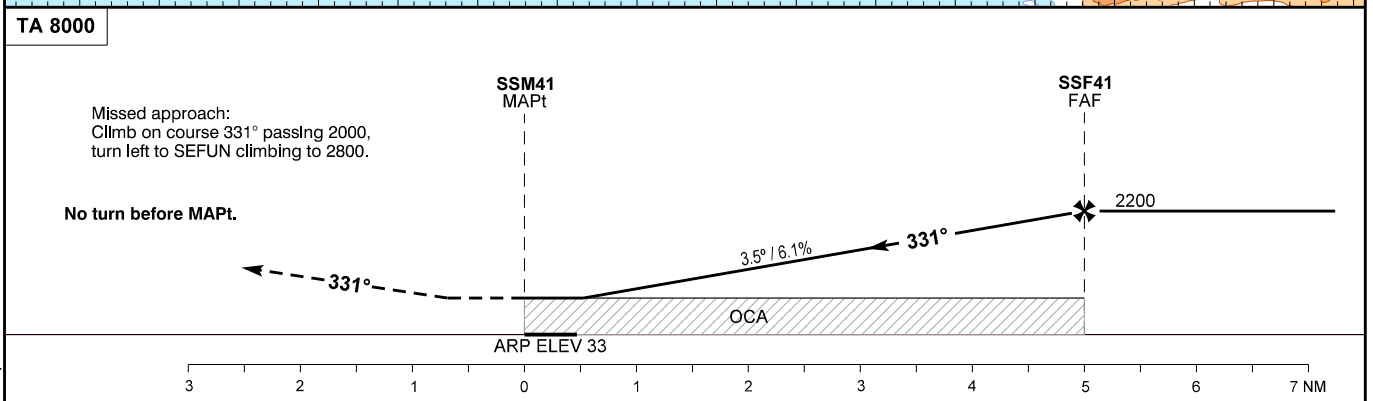
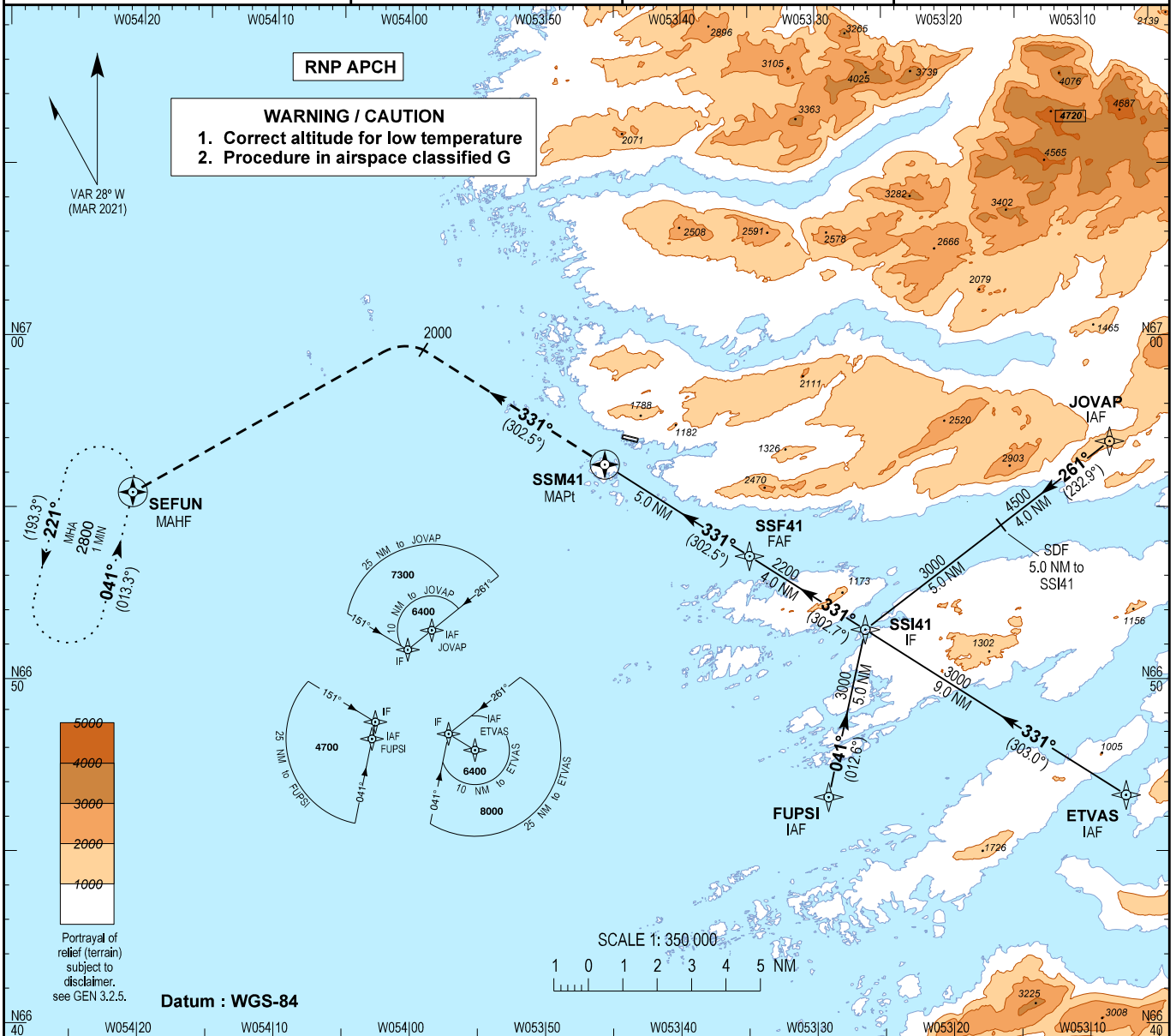
# INSTRUMENT APPROACH CHART - ICAO

AD ELEV : 33

Bearings are magnetic (true)  
ELEV, ALT and HGT in FT

Sisimiut AFIS : 118.100

AD 2 - BGSS  
RNP A - 1  
Sisimiut



OCA (H)	A	B	Remarks	DIST to SSM41 NM	1.0	2.0	3.0	4.0	5.0
LNAV-Circling	650 (617)	770 (737)	Only south of aerodrome	Altitude 3.5° (6.1%)	720	1090	1460	1830	2200

Time from FAF (SSF41) to MAPt (SSM41) - DIST 5.0 NM*						
GS	KT	80	100	120	140	160
Time	MIN:SEC	3:45	3:00	2:30	2:09	1:52
ROD 3.5°	FT/MIN	500	620	740	870	990

\*Timing not authorized for defining the MAPt.

Changes : New procedure.