

# INSTRUMENT APPROACH CHART - ICAO

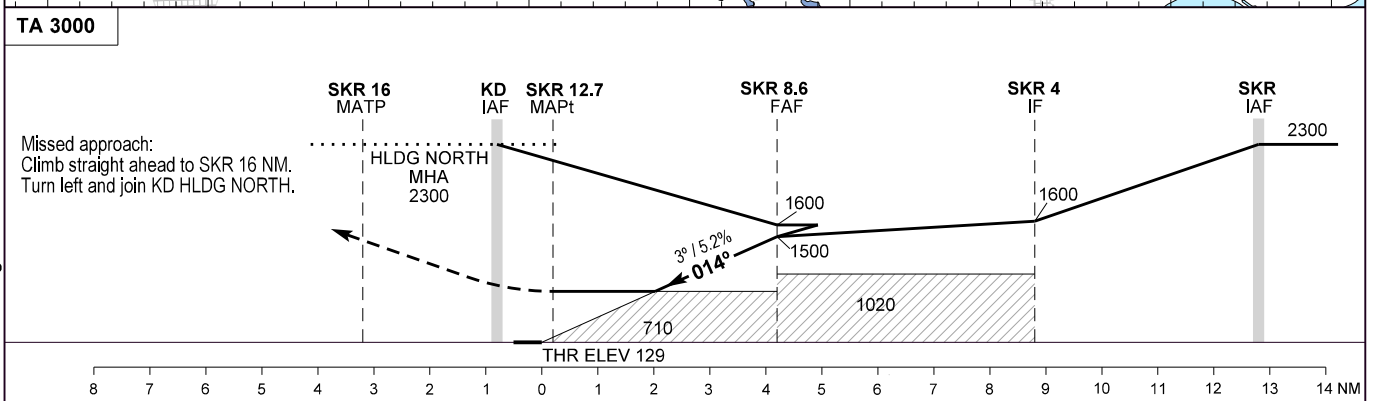
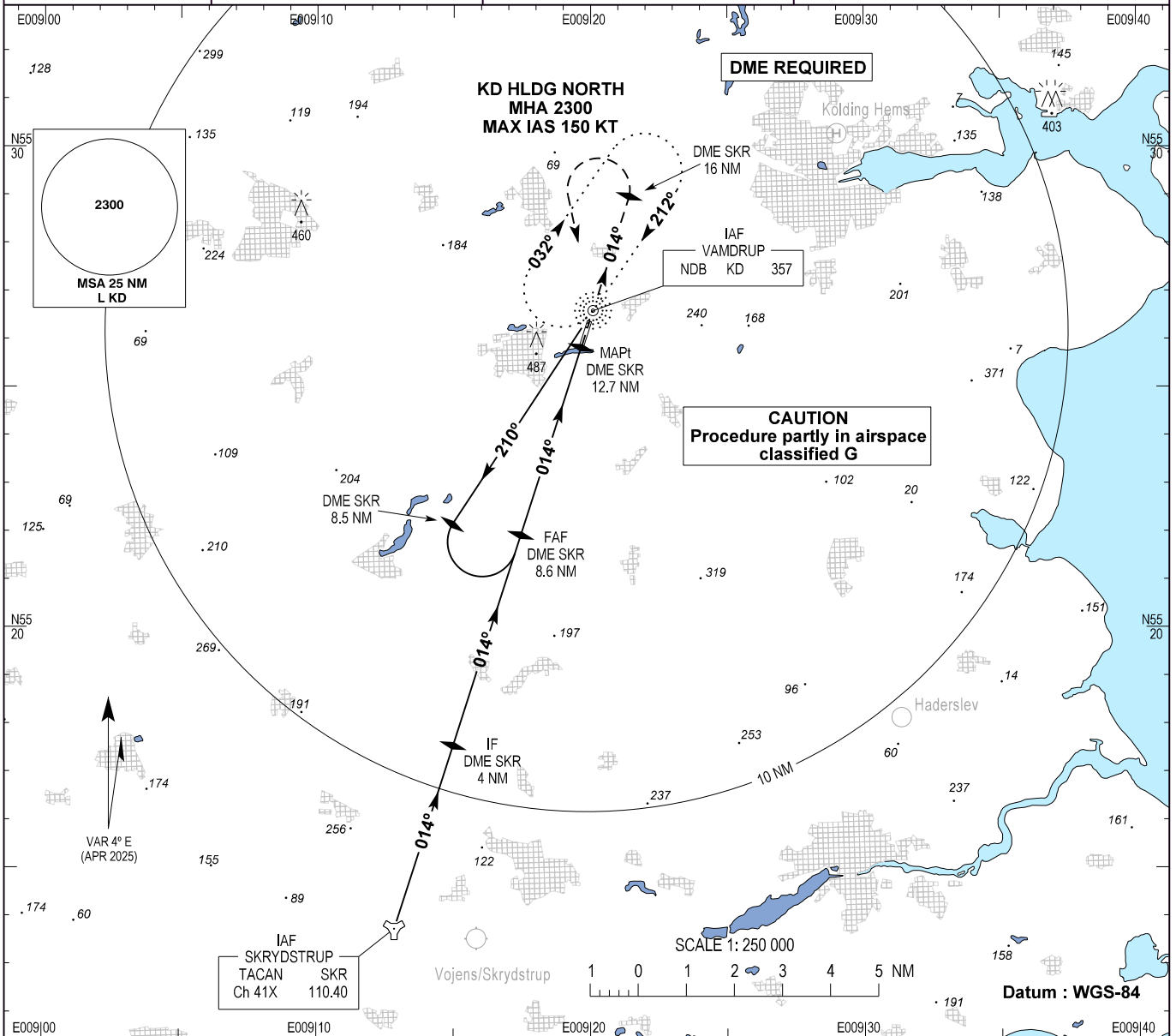
AD ELEV : 143

Bearings are magnetic  
ELEV, ALT and HGT in FT

Skrydstrup APP : 124.105 280.750

Vamdrup Information : 118.655

**AD 2 - EKVD  
NDB RWY 01  
Kolding / Vamdrup**



	SPECIAL CONDITIONS	
	A	B
OCA (H)	A	B
NDB	710 (580)	710 (580)
Circling*	710 (570)	710 (570)
GS	70	80
FAF - MAPt (3.6 NM)**	3:08	2:45
Rate of Descent	425	486
SKR DME NM	11.0	10.0
Altitude 3.0° Descent	821	1185

\*\*Timing not authorized for defining the MAPt

Changes : MAG VAR changed.