

# INSTRUMENT APPROACH CHART - ICAO

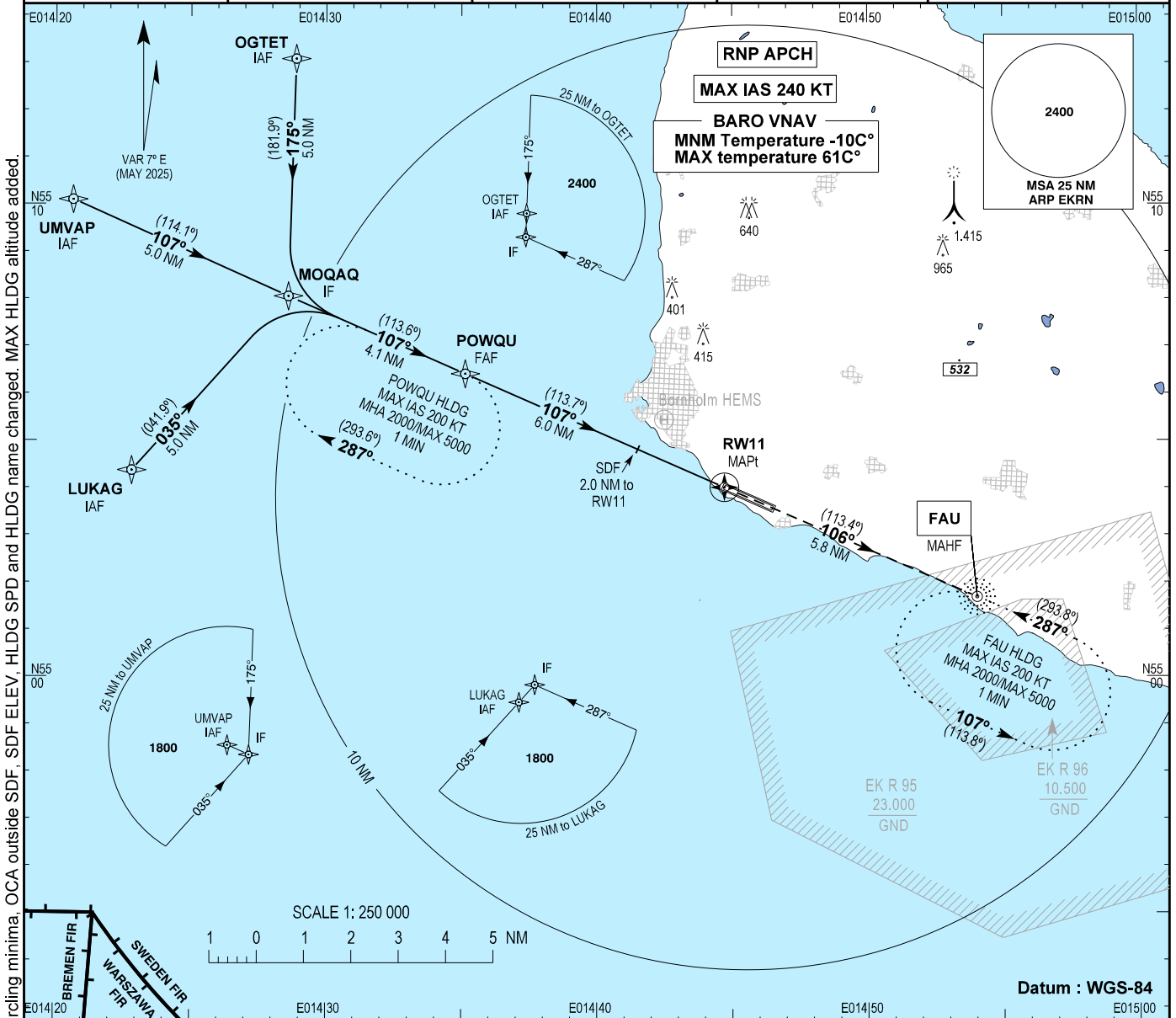
AD ELEV : 52

Bearings are magnetic (true)  
ELEV, ALT and HGT in FT

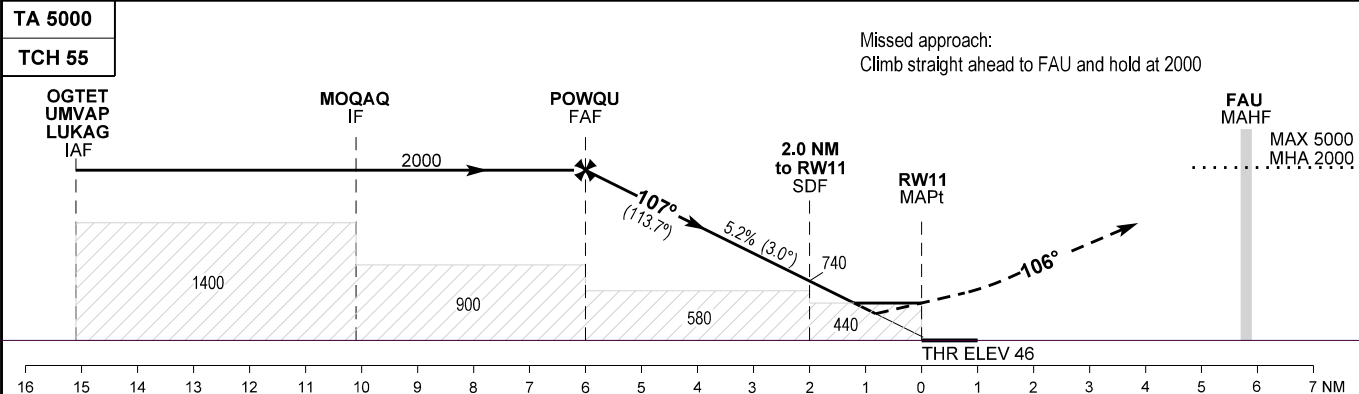
Rønne Tower : 118.330  
257.800

EGNOS :  
CH 88336  
E11A

AD 2 - EKRN  
RNP RWY 11 - 1  
Bornholm / Rønne



Changes : Magnetic variation and directions changed. Circling minima. OCA outside SDF. SDF ELEV. HLDG SPD and HLDG name changed. MAX HLDG altitude added.



OCA (H)	A	B	C	D	SPECIAL CONDITIONS					
LNAV	440 (394)				DIST to THR (NM)					
LNAV / VNAV	320 (274)	330 (284)	340 (294)	350 (304)	2	3	4	5	6	
LPV	296 (250)	296 (250)	305 (259)	315 (269)	ALT	740	1055	1375	1695	2010
Circling*	450 (400)	630 (580)	730 (680)	750 (700)	* SW of AD only					

Time to MAPt from FAF - DIST 6.0 NM									
GS	KT	60	80	100	120	140	160	180	200
Rate of descent	FT / MIN	318	425	531	637	743	849	955	1061

\* Cross 2.0 NM to RW11 not below 580 FT.  
Note: VSS penetrated by terrain left of track.