

Temporary Danger Areas EKD724 DANF, EKD725 HALFDAN A, EKD726 HALFDAN B, EKD727 GORM C, EKD728 TYRA, EKD729 HARALD

This AIP Denmark SUP 25/26 replaces AIP SUP 20/26. Coordinates of EKD725 HALFDAN A corrected.

Due to drone activities, Temporary Danger Areas will be established over and around oil rigs in the North Sea. All traffic is strongly advised to avoid flying in the danger areas when drones are airborne.

Temporary Danger Area EKD724 DANF:

Lateral limits:

55 32 01N 005 02 57E - 55 30 38N 005 12 39E - 55 25 07N 005 10 11E - 55 26 31N 005 00 29E - 55 32 01N 005 02 57E.

Temporary Danger Area EKD725 HALFDAN A:

Lateral limits:

55 35 20N 004 56 45E - 55 33 56N 005 06 28E - 55 28 25N 005 04 00E - 55 29 49N 004 54 17E - 55 35 20N 004 56 45E.

Temporary Danger Area EKD726 HALFDAN B:

Lateral limits:

55 35 34N 005 05 48E - 55 29 57N 005 07 33E - 55 28 58N 004 57 40E - 55 34 34N 004 55 55E - 55 35 34N 005 05 48E.

Temporary Danger Area EKD727 GORM C:

Lateral limits:

55 38 33N 004 43 17E - 55 36 05N 004 52 18E - 55 30 57N 004 47 56E - 55 33 25N 004 38 54E - 55 38 33N 004 43 17E.

Temporary Danger Area EKD728 TYRA:

Lateral limits:

55 47 06N 004 46 41E - 55 43 48N 004 54 48E - 55 39 12N 004 48 53E - 55 42 30N 004 40 46E - 55 47 06N 004 46 41E.

Temporary Danger Area EKD729 HARALD:

Lateral limits:

56 24 41N 004 16 43E - 56 20 37N 004 23 32E - 56 16 44N 004 16 03E - 56 20 48N 004 09 12E - 56 24 41N 004 16 43E.

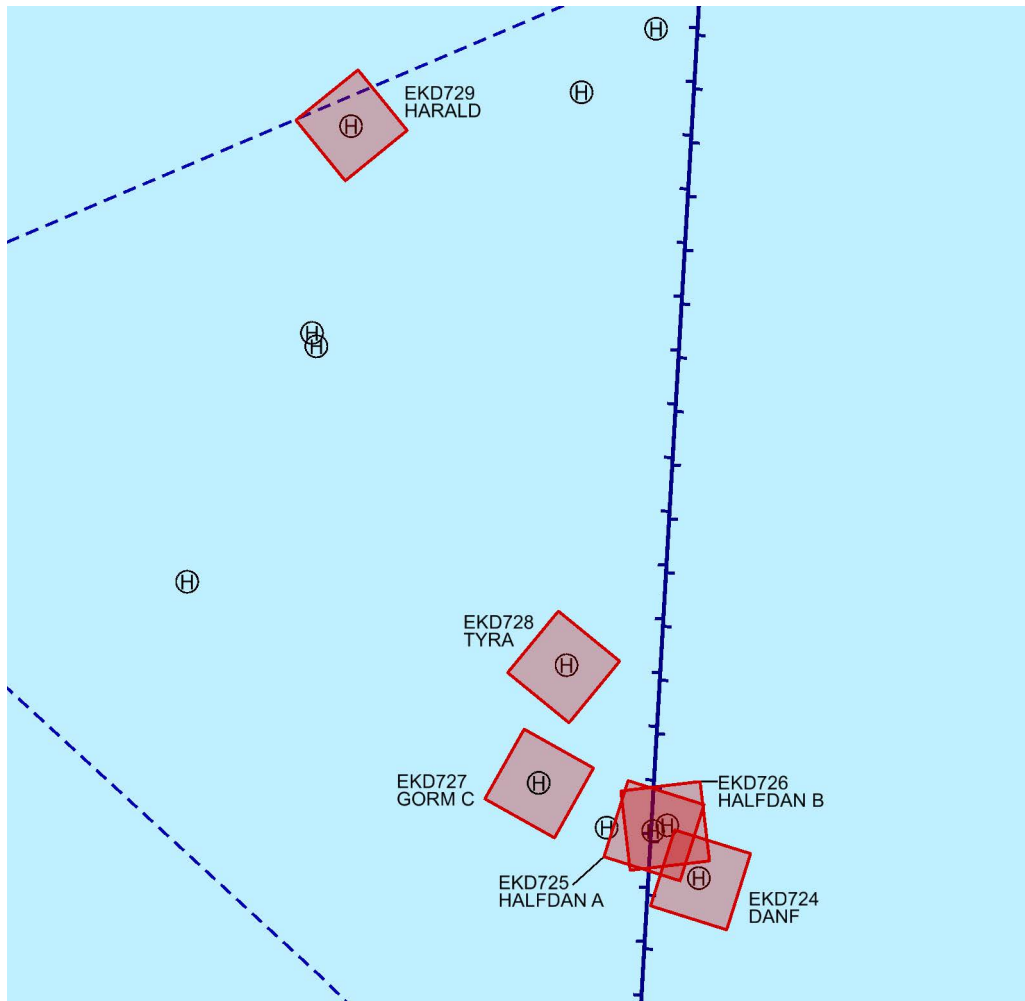
Vertical limits:

SFC - 1400 FT MSL.

Effective dates:

01 JUN 2026 - 31 AUG 2026, daily 0600 - 1800.

Information on exact activities will be published by NOTAM.
Relevant ATS-unit REF AIP Denmark ENR 5.1 item 3: ACC København.



REF: AIP Denmark ENR 5.1.