

# INSTRUMENT APPROACH CHART - ICAO

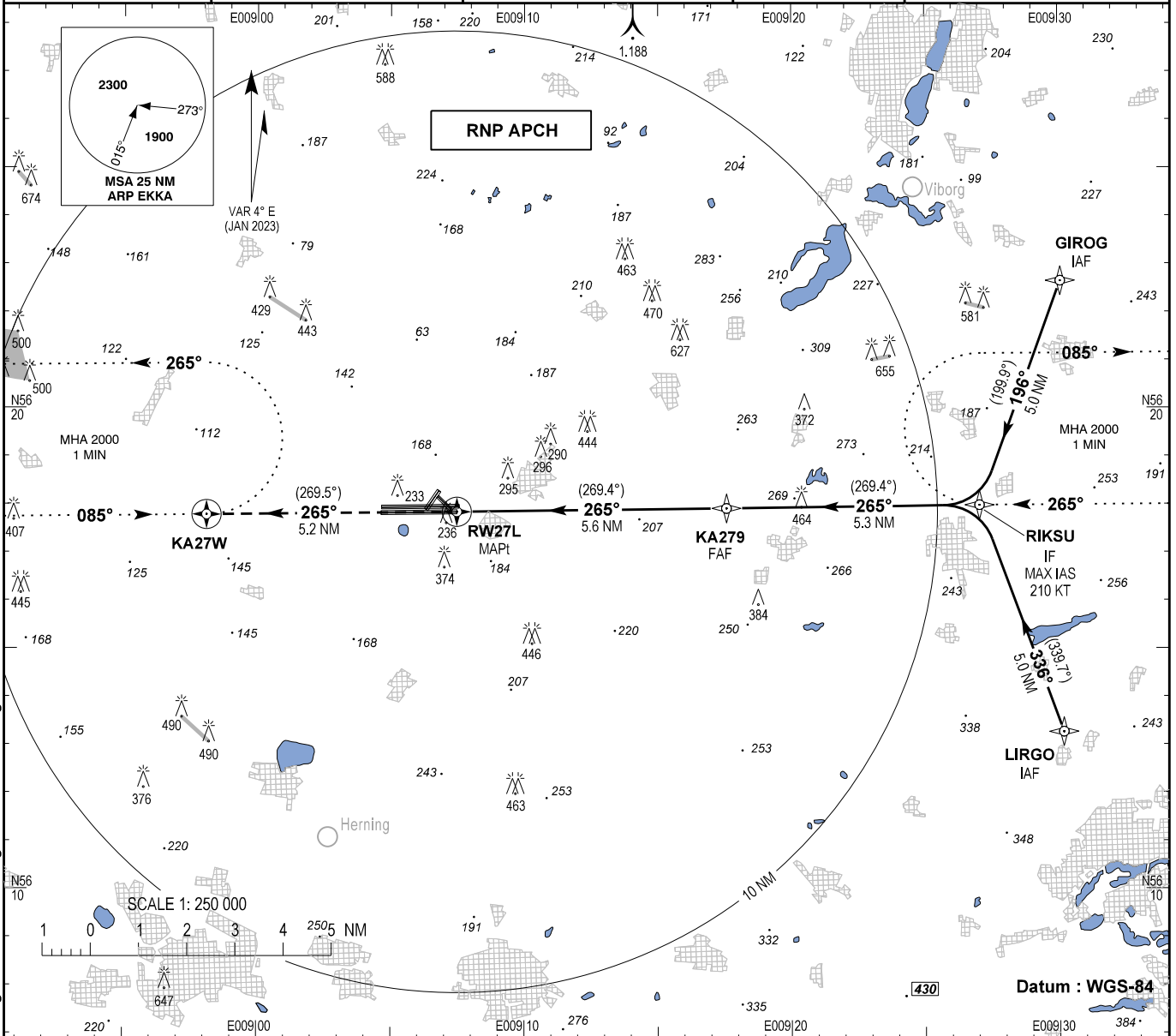
AD ELEV : 171

Bearings are magnetic (True)  
ELEV, ALT and HGT in FT

Karup APP : 120.430 269.275  
Karup TWR : 119.580 353.575  
ATIS : 120.580 257.800

EGNOS Channel :  
54104

AD 2 - EKKA  
RNP RWY 27L - 1  
(MIL AD, PPR)  
Karup / Midtjyllands Lufthavn

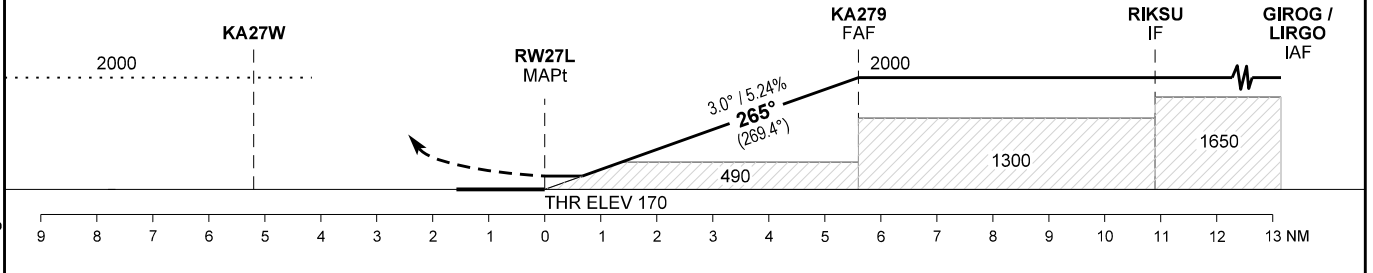


Changes : Magnetic variation and directions, OCA (H) Circling and MOCAs changed. Editorial changes.

TA 3000  
TCH 39.3

Missed approach :  
Climb on track to overfly KA27W  
and hold at 2000 FT.

RW27L - KA27W (A2000+, HM)



OCA (H)	A	B	C	D	
LPV	366 (196)	378 (208)	386 (216)	397 (227)	
LNAV/VNAV*	500 (330)				
LNAV**	570 (400)				
Circling	670 (500)	820 (650)	1060 (890)	1060 (890)	
DIST to RW27L	1	2	3	4	5
Nominal Altitude	530	850	1170	1490	1800

**SPECIAL CONDITIONS**

\* Not to be used below -25°C  
\*\* Timing not authorized for defining MAPt

PAPI 3.0° - not aligned with instrument procedure vertical path