

INSTRUMENT APPROACH CHART - ICAO

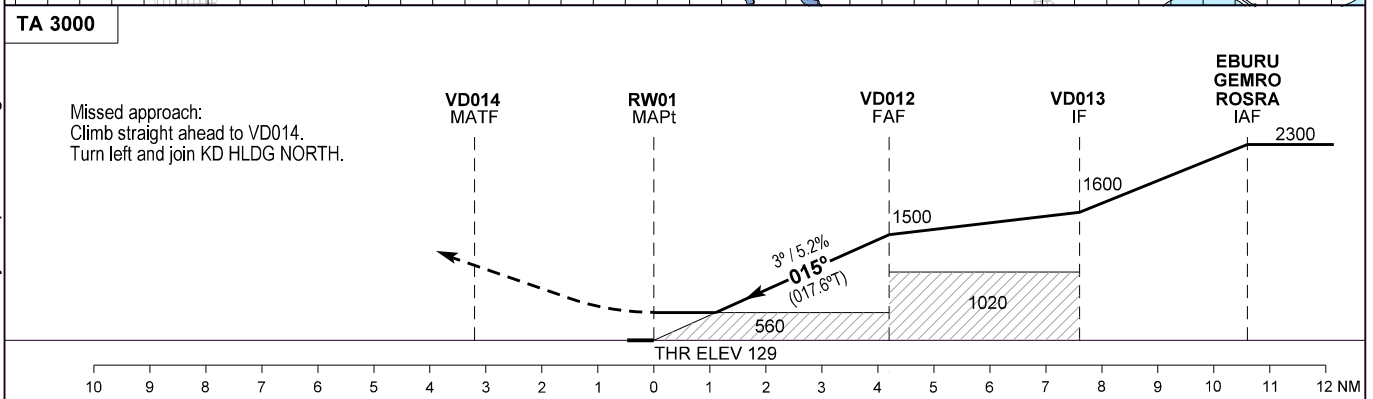
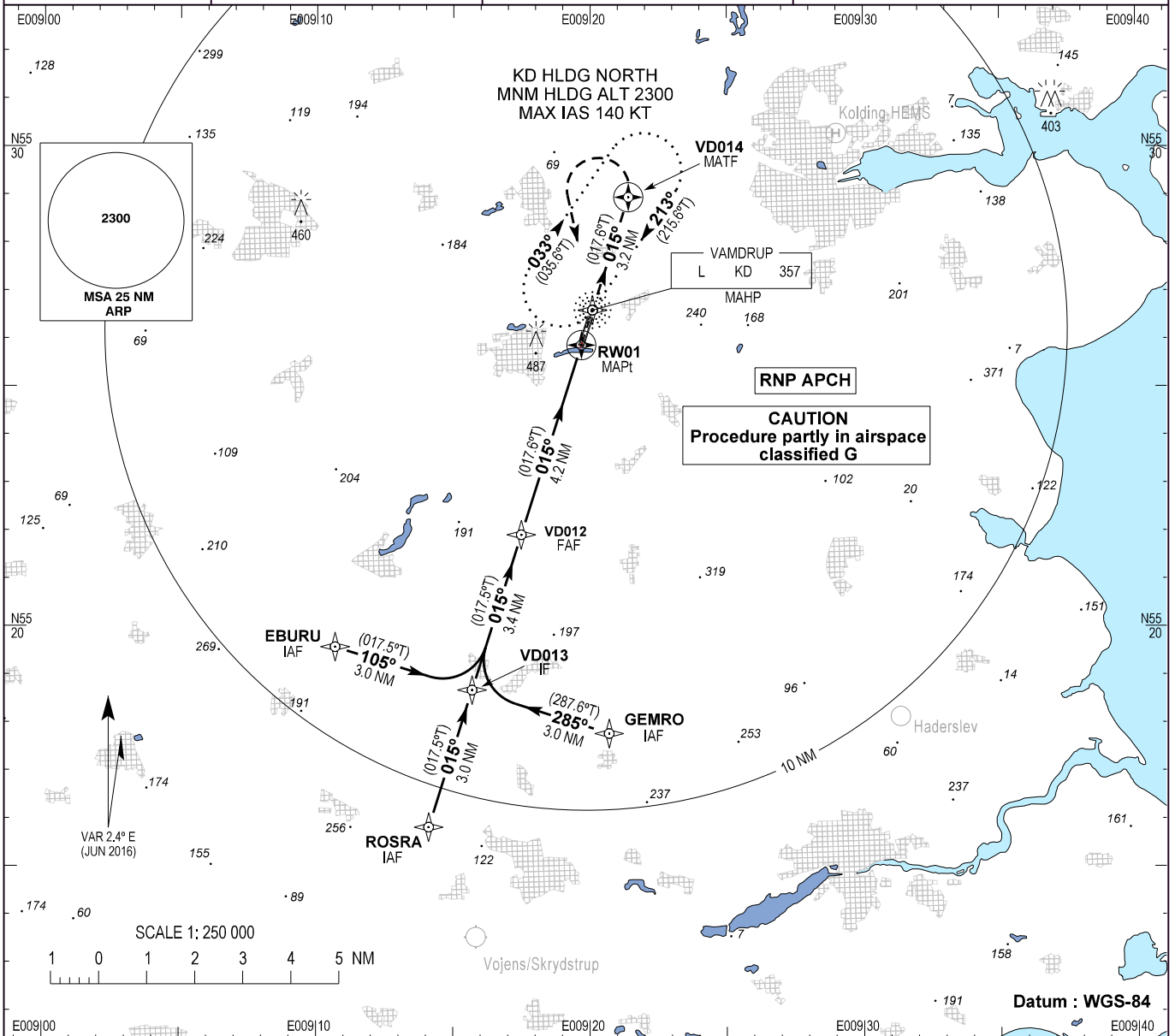
AD ELEV : 143

Bearings are magnetic (true)
ELEV, ALT and HGT in FT

Skrydstrup APP : 124.100 300.075

Vamdrup AFIS : 120.500

AD 2 - EKVD
RNAV (GNSS) RWY 01 - 1
Kolding / Vamdrup



Missed approach:
Climb straight ahead to VD014.
Turn left and join KD HLDG NORTH.

OCA (H)	A		B		SPECIAL CONDITIONS			
	560 (430)	560 (430)	560 (430)	690 (550)	*East of aerodrome only			
GS	70	80	90	100	110	120	130	140
VD012 - RW01 (4.2 NM)**	3:33	3:07	2:46	2:29	2:16	2:05	1:55	1:47
Rate of Descent	371	425	478	531	584	637	690	743
DIST to RW01 NM	1.0	2.0	3.0	4.0				
Altitude 3.0° Descent	500	815	1135	1450				

**Timing not authorized for defining the MAPt

Changes : VHF FREQ Skrydstrup APP changed.