

INSTRUMENT APPROACH CHART - ICAO

AD ELEV : 143

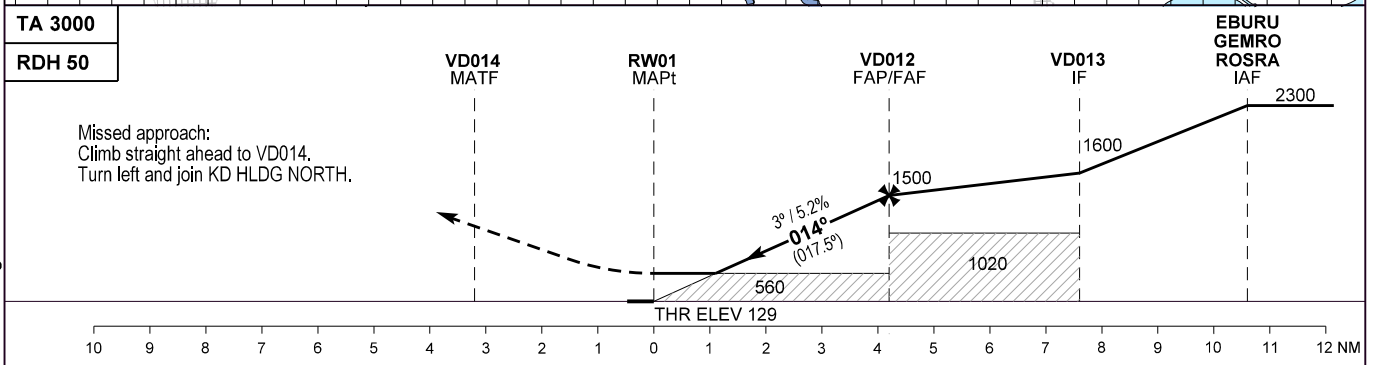
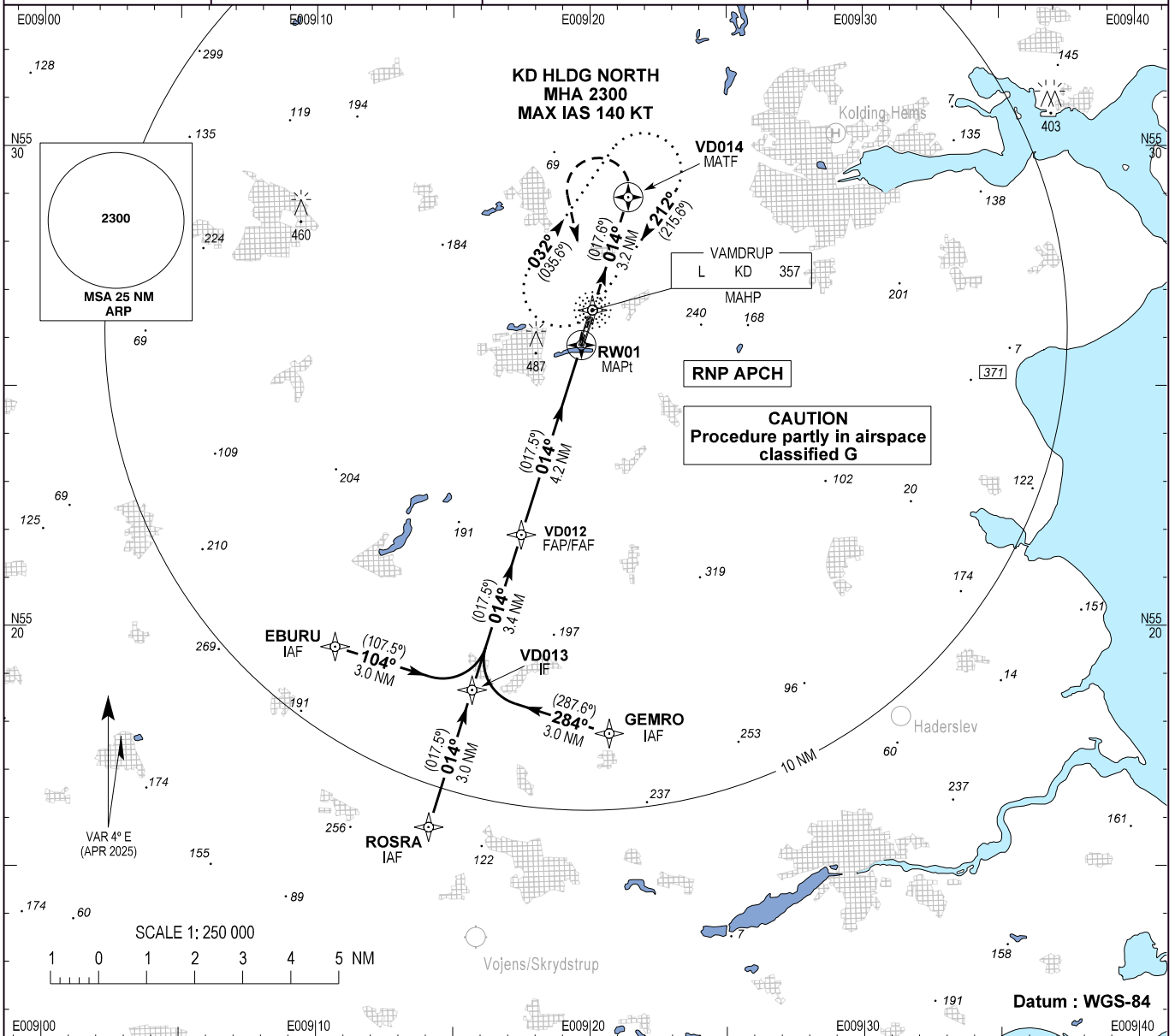
Bearings are magnetic (true)
ELEV, ALT and HGT in FT

Skrydstrup APP : 124.105 280.750

Vamdrup Information : 118.655

EGNOS
CH : 74505
E01A

**AD 2 - EKVD
RNP RWY 01 - 1
Kolding / Vamdrup**



OCA (H)	A		B		MDA (H)		A		B		SPECIAL CONDITIONS
	A	B	A	B	A	B	A	B			
LPV	319 (190)	329 (200)	LPV		379 (250)		*East of aerodrome only				
LNAV / VNAV***	522 (393)	524 (395)	LNAV / VNAV ***		522 (393)	524 (395)	**Timing not authorized for defining the MAPt				
LNAV	560 (430)		LNAV		560 (430)		***Not to be used below -10°C or above 60.8°C				
Circling*	590 (450)	690 (550)									
GS	70	80	90	100	110	120	130	140			
VD012 - RW01 (4.2 NM)**	3:33	3:07	2:46	2:29	2:16	2:05	1:55	1:47			
Rate of Descent	372	425	478	531	584	637	690	743			
DIST to RW01 NM	1.0	2.0	3.0	4.0							
Altitude 3.0° Descent	500	815	1135	1450							

Changes : MAG VAR changed.