

# INSTRUMENT APPROACH CHART - ICAO

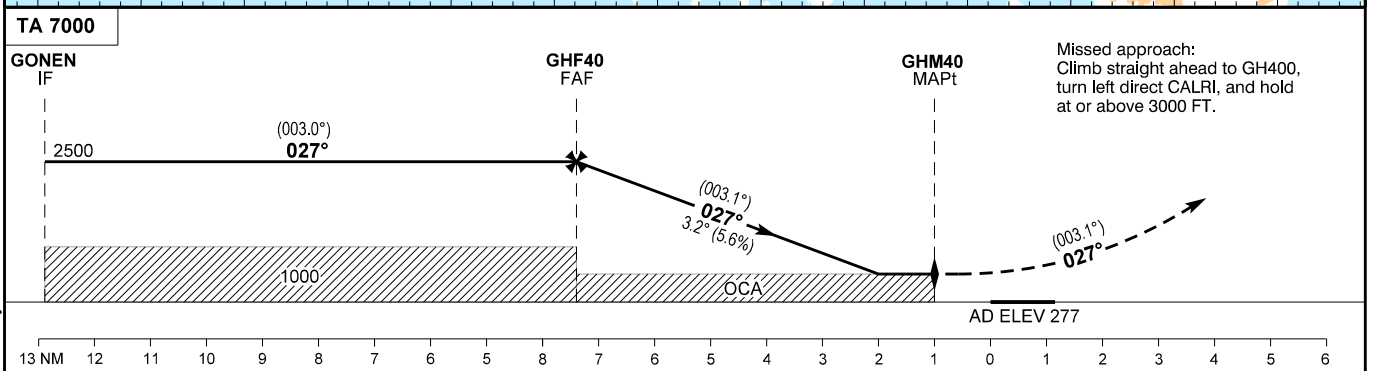
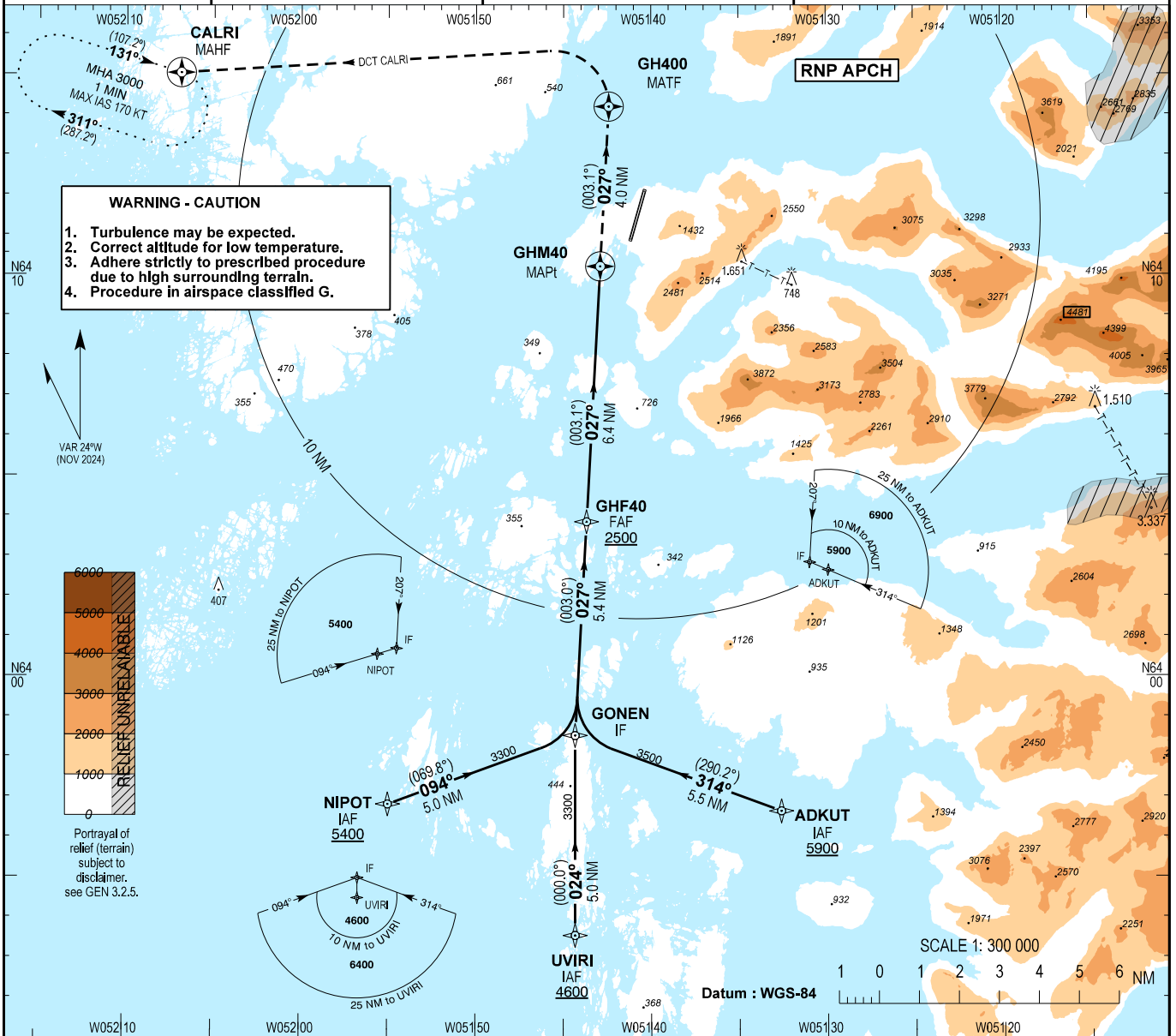
AD ELEV : 277

Bearings are magnetic (true)  
ELEV, ALT and HGT in FT

Nuuk AFIS : 119.100

ATIS : 123.000

AD 2 - BGGH  
RNP A - 1  
Nuuk



OCA (H)	A	B
Circling *	700 (423)	770 (493)

\* Only west of aerodrome

DIST to GHM40 NM	5.0	4.0	3.0	2.0	1.0
Altitude (3.2° descent)	2030	1690	1350	1010	OCA
Time from GHF40 (FAF) to GHM40 (MAPt) - DIST 6.4 NM **					
GS	KT	80	100	120	140
Time	MIN:SEC	4:47	3:50	3:11	2:44
Rate of descent 3.2° (5.6%)	FT/MIN	450	570	680	790

\*\* Timing not authorized for defining the MAPt

Changes : OBST Kobbejford transmission lines added.