

# INSTRUMENT APPROACH CHART - ICAO

AD ELEV : 246

Bearings are magnetic (true)  
ELEV, ALT and HGT in FT

Billund APP : 127.580

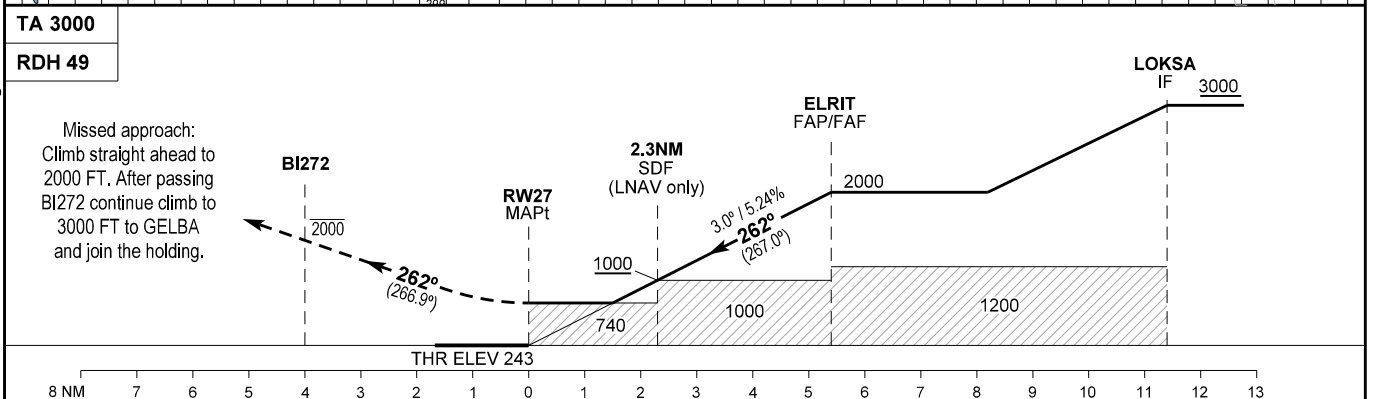
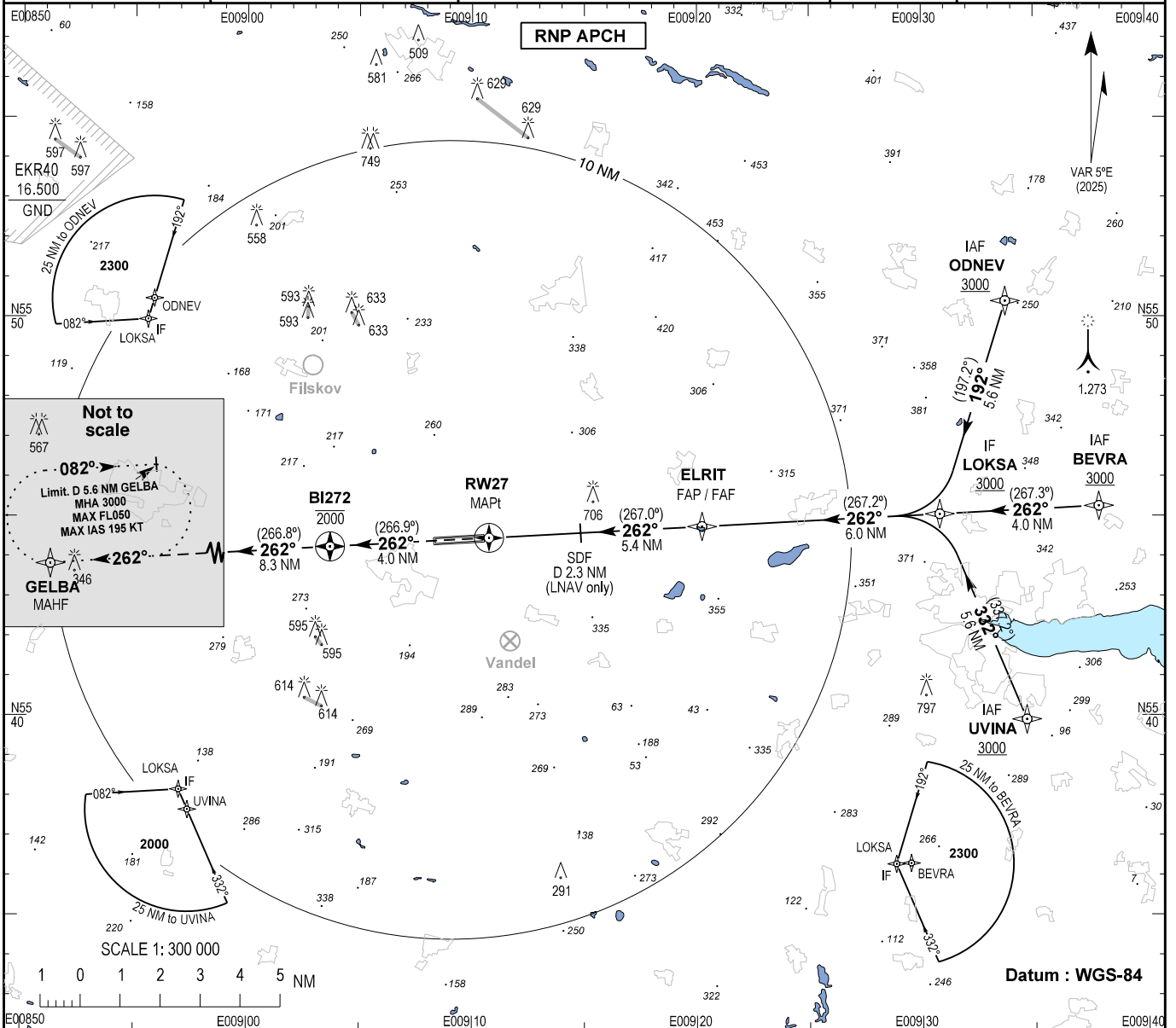
Billund TWR : 119.005 (ARR)

129.505 (DEP)

ATIS : 118.780 (ARR) 129.105 (DEP)

EGNOS :  
CH 65547  
E27A

AD 2 - EKBI  
RNP RWY 27 - 1  
Billund



OCA (H)	A	B	C	D	D <sub>L</sub>	SPECIAL CONDITIONS
LPV	392 (148)	401 (157)	410 (166)	420 (176)	422 (178)	*Not to be used below -25°C. NOTE: The missed approach hold at GELBA is designed as direct entry only.
LNAV/VNAV*	630 (386)	640 (396)	650 (406)	660 (416)	660 (416)	
LNAV	740 (496)	740 (496)	740 (496)	740 (496)	740 (496)	
Circling**	800 (553)	820 (573)	1140 (893)	1140 (893)	1140 (893)	
DIST to RW27	NM	5.0	4.0	3.0	2.0	
Nominal altitude		1885	1567	1248	930	**N of AD only.

Changes : VAR, AD ELEV and THR ELEV changed.