

INSTRUMENT APPROACH CHART - ICAO

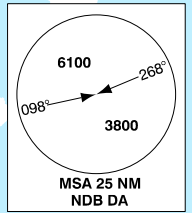
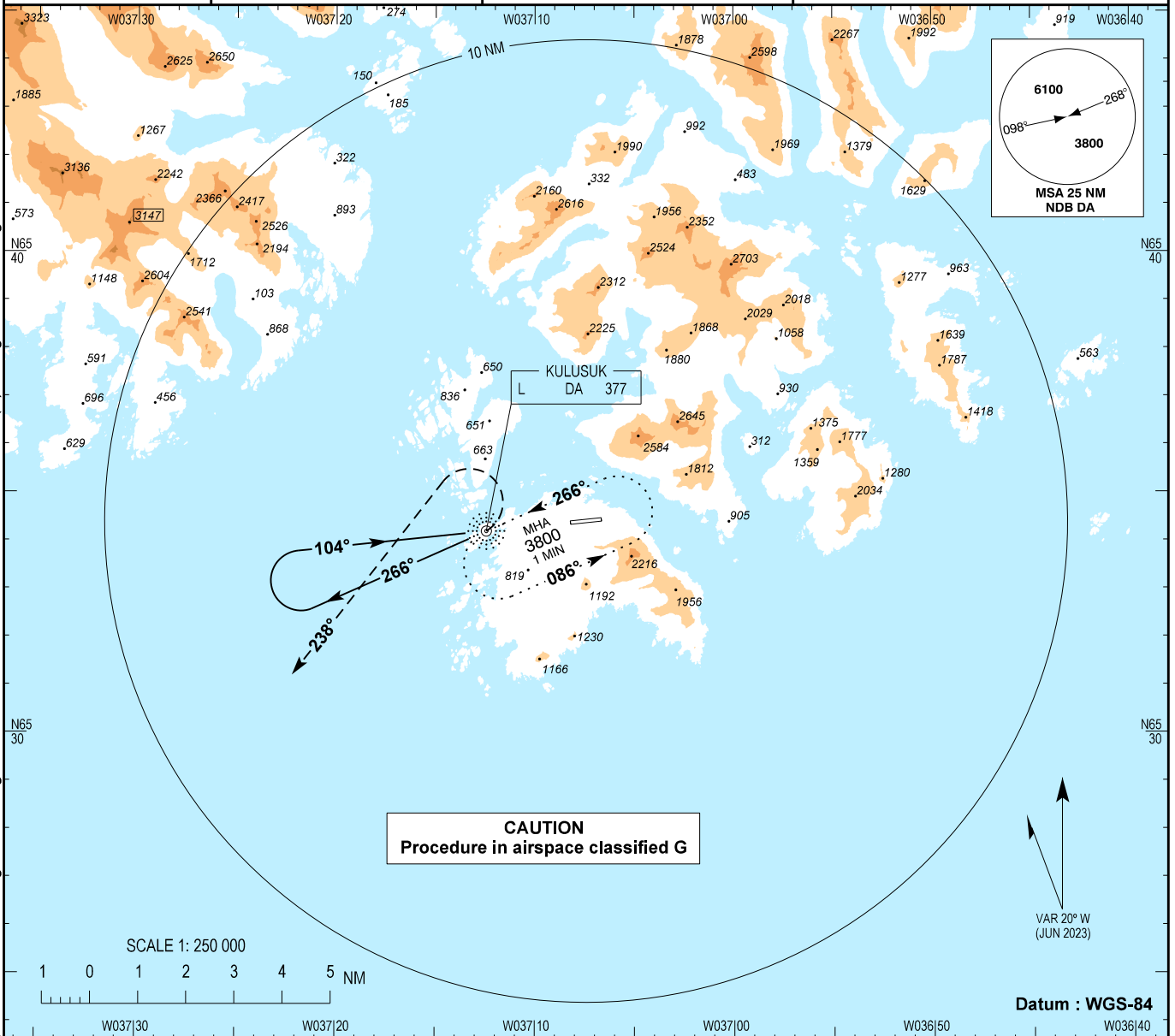
AD ELEV : 117

Bearings are magnetic
ELEV, ALT and HGT in FT

Kulusuk AFIS : 118.100

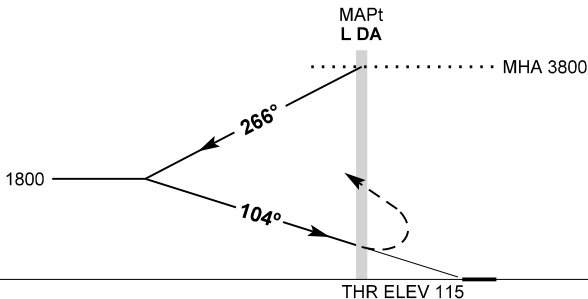
**AD 2 - BGKK
NDB RWY 10
Kulusuk**

Changes : VAR and MAG bearings changed. RWY designator and chart designator changed. THR ELEV and AD ELEV corrected. OCA (H) changed. New background contour added



CAUTION
Procedure in airspace classified G

TA 7000



Missed approach:
Immediate left climbing turn
to track 238° climb to 3800
then left turn back to HLDG.

OCA (H)	A	B	SPECIAL CONDITIONS
Straight in *	890 (775)	890 (775)	* MAX APCH speed IAS 120 KT
Circling	-	-	