

INSTRUMENT APPROACH CHART - ICAO

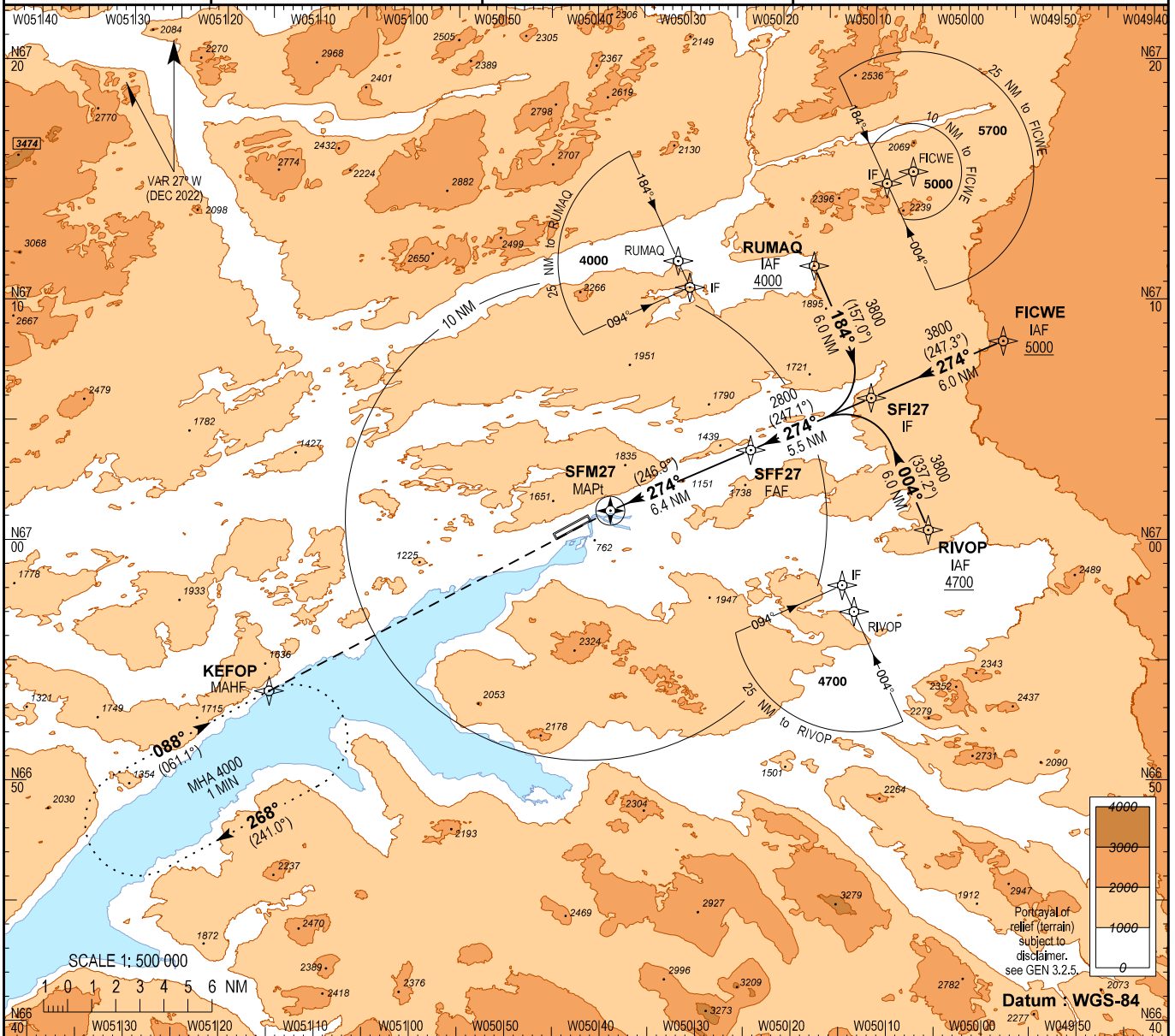
AD ELEV : 165

Bearings are magnetic (true)
ELEV, ALT and HGT in FT

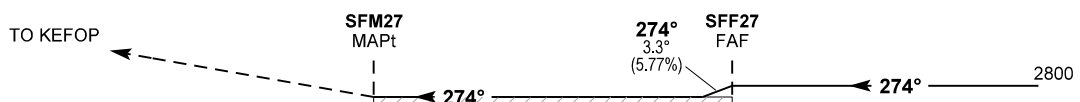
Sondrestrom APP : 126.200

Sondrestrom TWR : 118.300

**AD 2 - BGSF
RNP B - 1
(ACFT CAT C / D)
Kangerlussuaq**

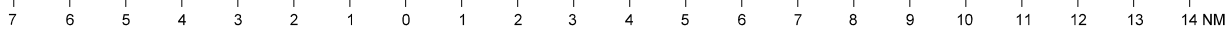


TA 7000



Missed approach:
Climb direct KEFOP and hold at 4000 FT.
No turn before MAPt.

ARP ELEV 165



OCA (H)	C	D	SPECIAL CONDITIONS
Circling *	2600 (2435)	2800 (2635)	* Only south of aerodrome

Time to MAPt from FAF - DIST 6.4 NM							
GS	KT	100	120	140	160	180	200
Time	MIN:SEC	03:50	03:12	02:45	02:24	02:08	01:55
ROD 3.3° / 5.77%	FT/MIN	580	700	820	930	1050	1170
DIST to SFM27		6.0					
ALT 3.3° descent		2665					

Timing not authorized for defining the MAPt.

Changes : Missed approach procedure changed.