

INSTRUMENT APPROACH CHART - ICAO

AD ELEV : 143

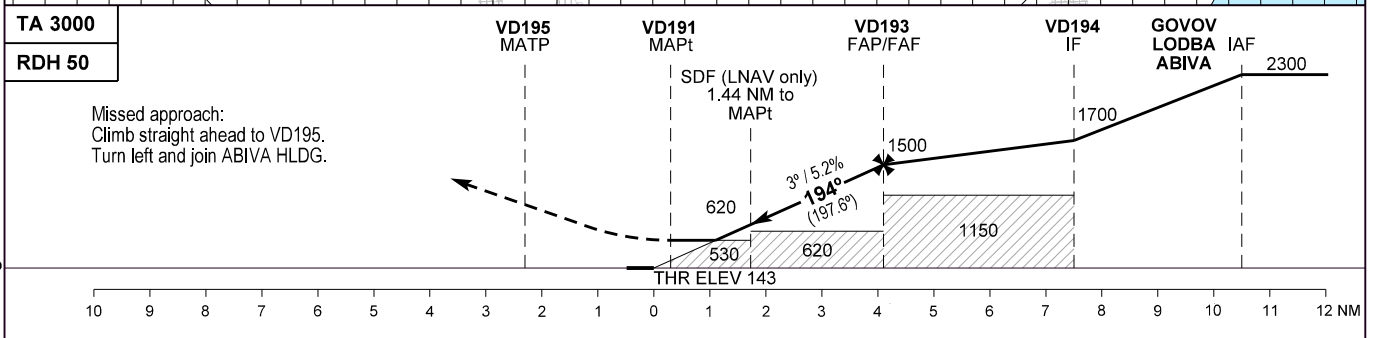
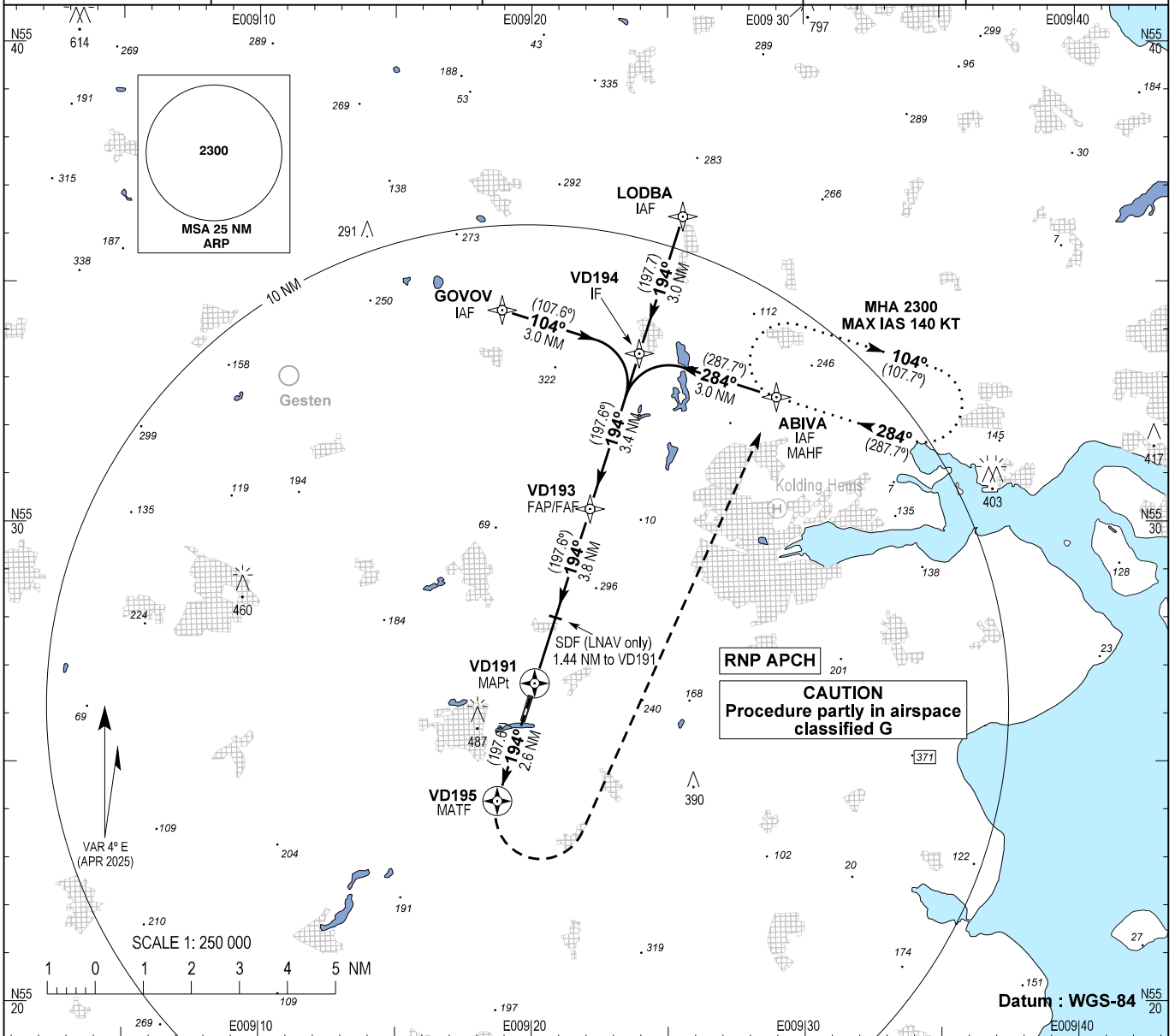
Bearings are magnetic (true)
ELEV, ALT and HGT in FT

Skrydstrup APP : 124.105 280.750

Vamdrup Information : 118.655

EGNOS
CH : 59939
E19A

AD 2 - EKVD
RNP RWY 19 - 1
Kolding / Vamdrup



	TA 3000		RDH 50		VD195 MATP		VD191 MAPt		VD193 FAP/FAF		VD194 IF		GOVOV LODBA IAF	
													2300	
Missed approach:	Climb straight ahead to VD195. Turn left and join ABIVA HLDG.													
OCA (H)	A	B	MDA (H)		A	B	SPECIAL CONDITIONS							
LPV	319 (176)	329 (186)	LPV		393 (250)		*East of aerodrome only							
LNAV / VNAV***	445 (302)	455 (312)	LNAV / VNAV ***		445 (302) 455 (312)		**Timing not authorized for defining the MAPt							
LNAV	530 (390)		LNAV		530 (390)		***Not to be used below -10°C or above 60.8°C							
Circling*	590 (450)	690 (550)												
GS	70	80	90	100	110	120	130	140						
VD193-VD191 (3.82 NM)**	3:16	2:52	2:33	2:17	2:05	1:55	1:46	1:38						
Rate of Descent	372	425	478	531	584	637	690	743						
DIST to VD191	NM	1.0	2.0	3.0										
DIST to THR 19	NM	1.3	2.3	3.3										
Altitude 3.0° Descent	600	920	1240											

Changes : MAG VAR changed.