

INSTRUMENT APPROACH CHART - ICAO

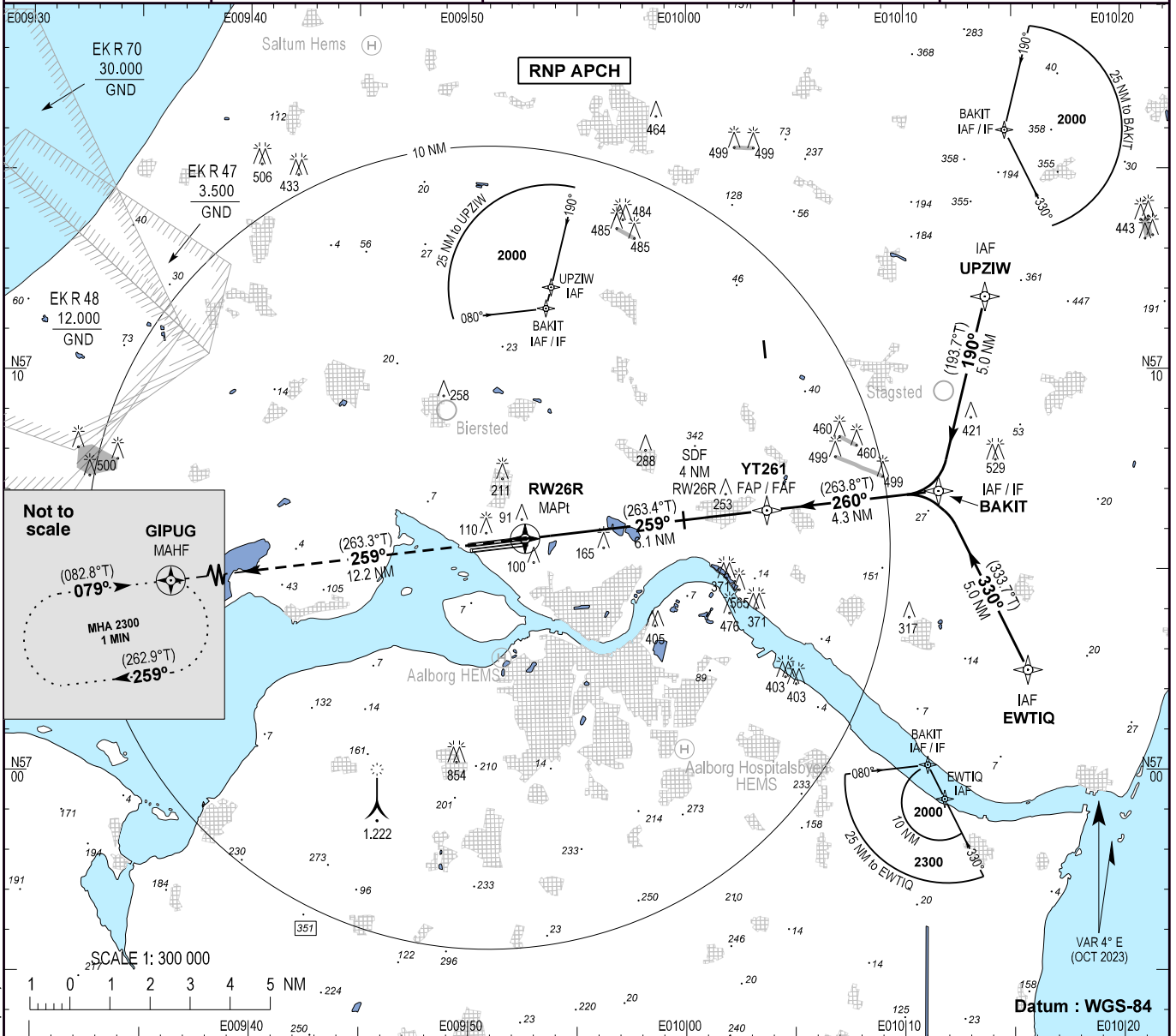
AD ELEV : 8

Bearings are magnetic (true)
ELEV, ALT and HGT in FT

Aalborg APP : 123.980 362.450
Aalborg TWR: 118.305 353.525 257.800
ATIS : 120.480

EGNOS
CH : 95396
E26A

**AD 2 - EKYT
RNP RWY 26R - 1
Aalborg (CIV / MIL)**



Not to scale

GIPUG MAHF

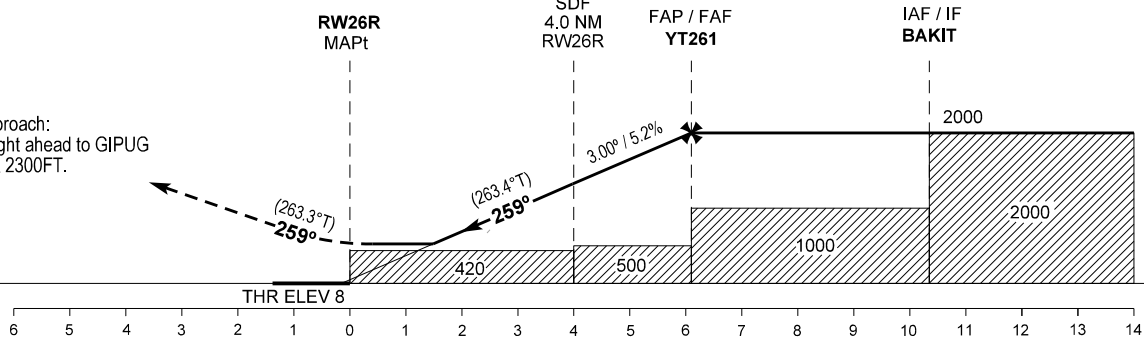
MHA 2300 1 MIN

(082.8°T) **079°**

(262.9°T) **259°**

TA 3000
RDH 51

Missed approach:
Climb straight ahead to GIPUG
and hold at 2300FT.



OCA (H)	A	B	C	D
LPV	260 (250)	260 (250)	260 (250)	270 (260)
LNAV / VNAV	260 (250)	260 (250)	270 (260)	280 (270)
LNAV	420 (410)	420 (410)	420 (410)	420 (410)
Circling*	510 (500)*	510 (500)*	690 (680)*	750 (740)*

SPECIAL CONDITIONS		Notes :					
		Not to be used below -30°C or above +61°C.					
Distance to THR	NM	2	3	4	5	6	
ALT	FT	700	1015	1335	1655	1970	
GS	KT	70	80	90	100	110	
ROD	FT / MIN	370	430	480	530	580	

Changes : New Aalborg Hospitalsbyen HEMS (Private Helipad) added.