

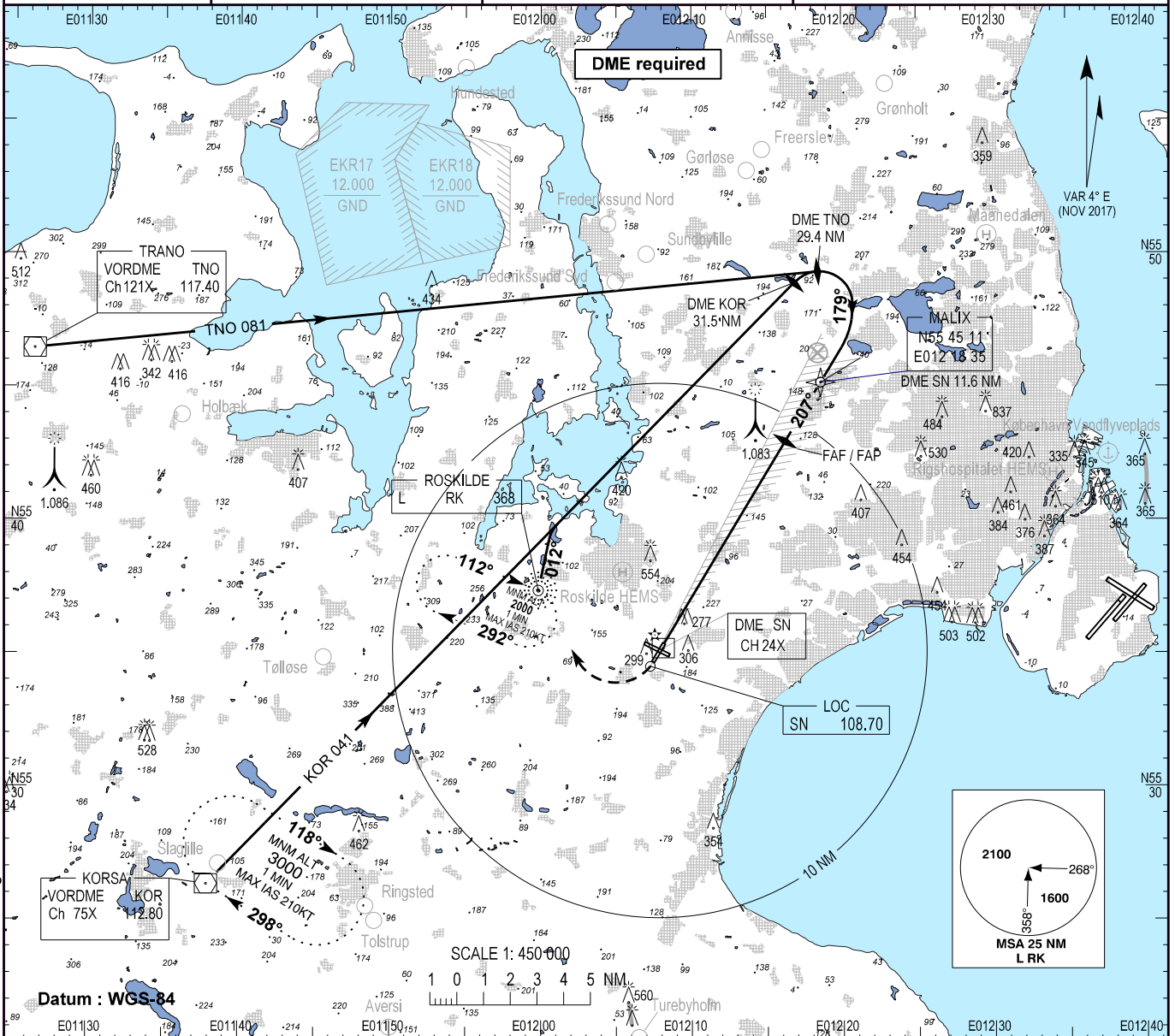
**INSTRUMENT  
APPROACH  
CHART - ICAO**

AD ELEV : 146

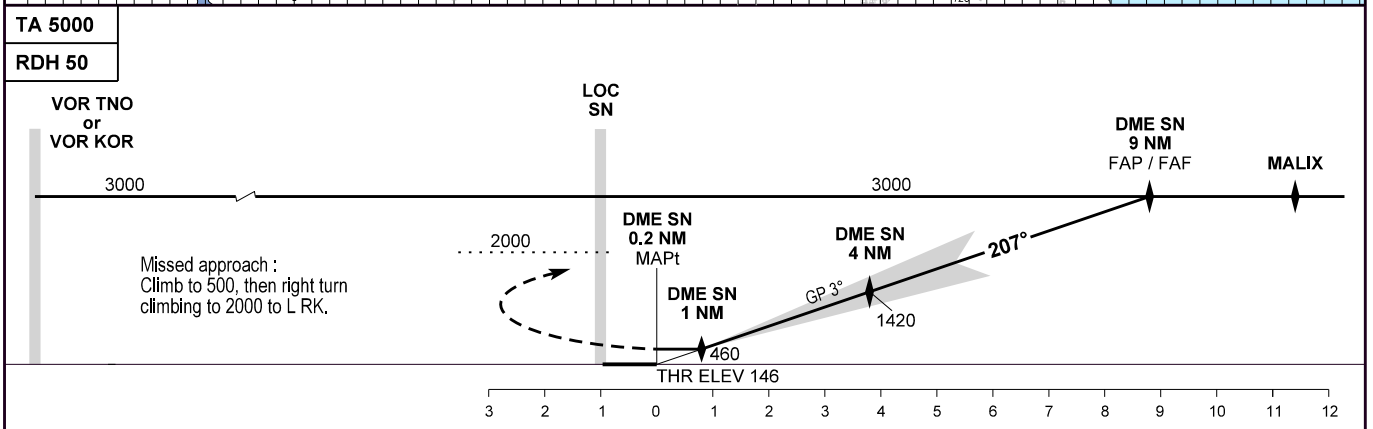
Bearings are magnetic (true)  
ELEV, ALT and HGT in FT

Roskilde APP : 125.530  
Roskilde TWR : 118.905 119.655  
ATIS : 123.805

**AD 2 - EKRK  
ILS RWY 21  
København / Roskilde**



Changes : EKML withdrawn. EK R 17 and EK R 18 corrected. Editorial changes.



OCA (H)	A	B	C	D	SPECIAL CONDITIONS
ILS	300 (154)	308 (162)	317 (171)	327 (181)	
GP INOP *	525 (380)	525 (380)	525 (380)	525 (380)	* Pass DME SN 4 NM not below 1420
Circling	610 (470)	850 (710)	950 (810)	950 (810)	

DME SN	1	2	3	4	5	6	7	8	9
DIST to THR	0,8	1,8	2,8	3,8	4,8	5,8	6,8	7,8	8,8
ALT	460	780	1100	1420	1730	2050	2370	2690	3000