

**INSTRUMENT APPROACH CHART - ICAO**

AD ELEV : 82

Bearings are magnetic (true)  
ELEV, ALT and HGT in FT

Aarhus APP : 119.280

Aarhus TWR : 118.530

ATIS : 125.155

EGNOS channel : 48468

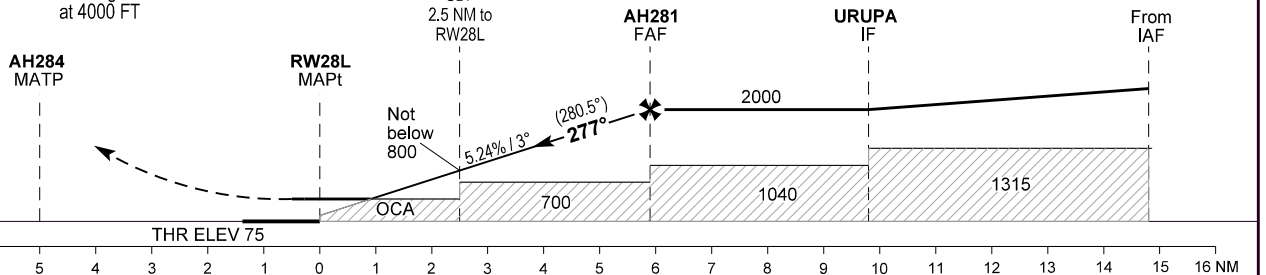
**AD 2 - EKAH  
RNP RWY 28L - 1  
Aarhus**



TA 3000

RDH 50

Missed approach:  
Climb on track to overfly AH284.  
Turn right direct to BADUT to hold  
at 4000 FT



OCA (H)	A	B	C	D
LPV	210 (135)	217 (142)	227 (152)	236 (161)
LNAV / VNAV *	360 (290)	380 (300)	390 (310)	400 (320)
LNAV **	480 (400)	480 (400)	480 (400)	480 (400)
Circling	570 (490)	680 (600)	1060 (980)	1180 (1100)

SPECIAL CONDITIONS

\* Not to be used below -25°C  
\*\* Cross 2.5 NM before RW28L not below 800

PAPI 2.75° - not aligned with instrument procedure vertical path.

Timing not authorized for defining MAPt

DIST to RW28R	NM	5	4	3	2	1
Nominal altitude		1720	1405	1090	770	450

Changes : ATIS FREQ changed.