

INSTRUMENT APPROACH CHART - ICAO

AD ELEV : 97

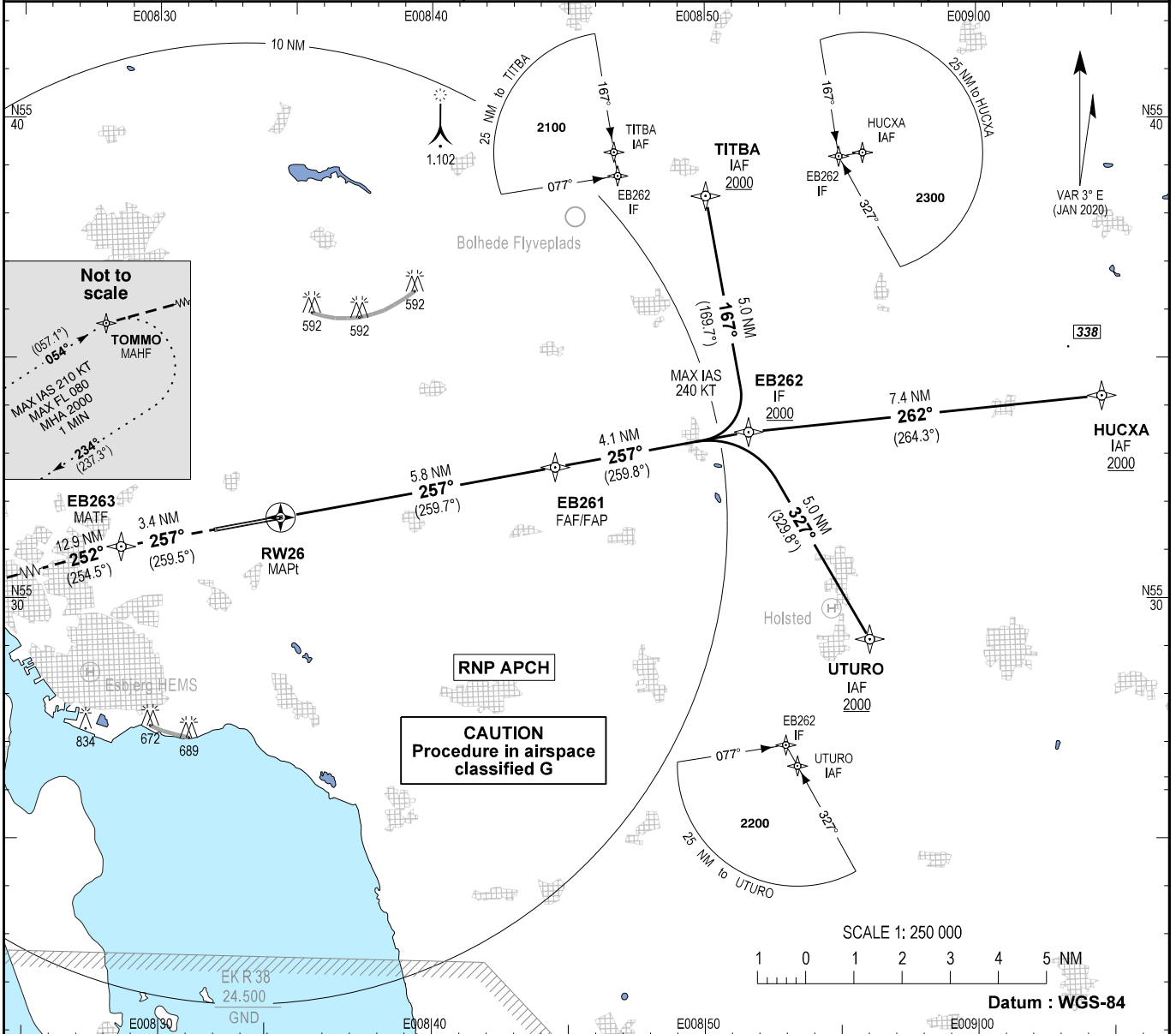
Bearings are magnetic (True)
ELEV, ALT and HGT in FT

Billund APP : 127.580

Esbjerg Information : 120.155

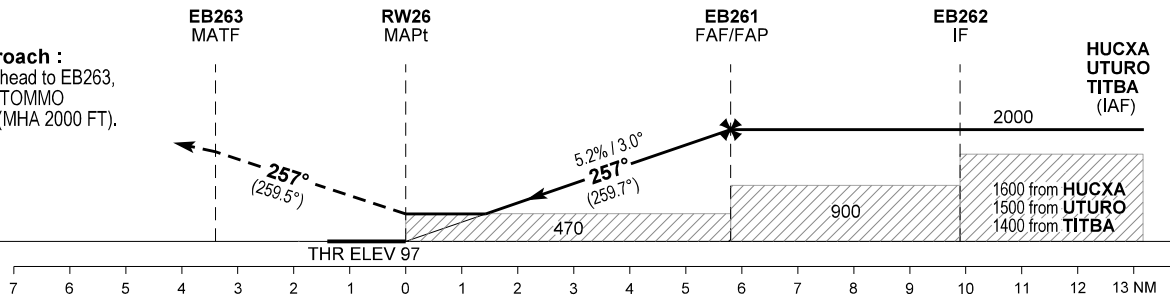
EGNOS
Ch : 59258
E26A

AD 2 - EKEB
RNP RWY 26 - 1
Esbjerg



TA 3000
RDH 50

Missed approach :
Climb straight ahead to EB263,
then turn left to TOMMO
to join the hold (MHA 2000 FT).



Changes : TOMMO MAHF text changed.

OCA (H)	A	B	C	D	Note: * MNM TEMP -25°C. MAX TEMP 61°C. (BARO VNAV) ** N of RWY only							
LPV	258 (161)	266 (169)	277 (180)	286 (189)								
LNAV/VNAV *	316 (219)	326 (229)	336 (239)	346 (249)								
LNAV	470 (380)				Recommended LNAV Profile on Final Approach							
Visual Circling (Heights AAL)	590 (500)	600 (510)	840 (750)**	990 (890)**	DIST to THR (NM)	2	3	4	5			
					ALT (FT)	790	1100	1420	1740			
					GS (KT)	60	80	100	120	140	160	180
					ROD (FT/MIN)	318	425	531	637	743	849	955