

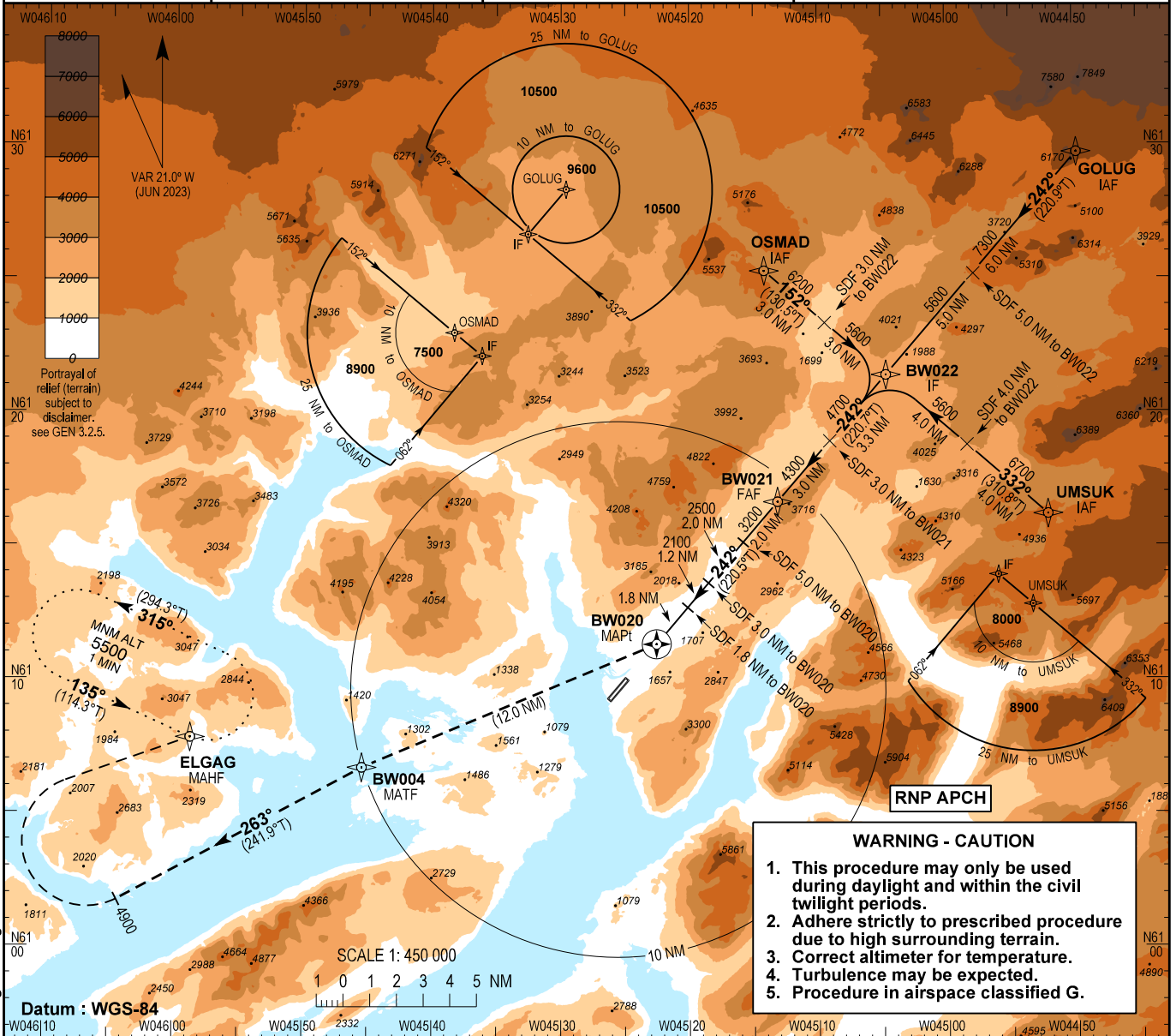
# INSTRUMENT APPROACH CHART - ICAO

AD ELEV : 112

Bearings are magnetic (true)  
ELEV, ALT and HGT in FT

Narsarsuaq AFIS : 119.100

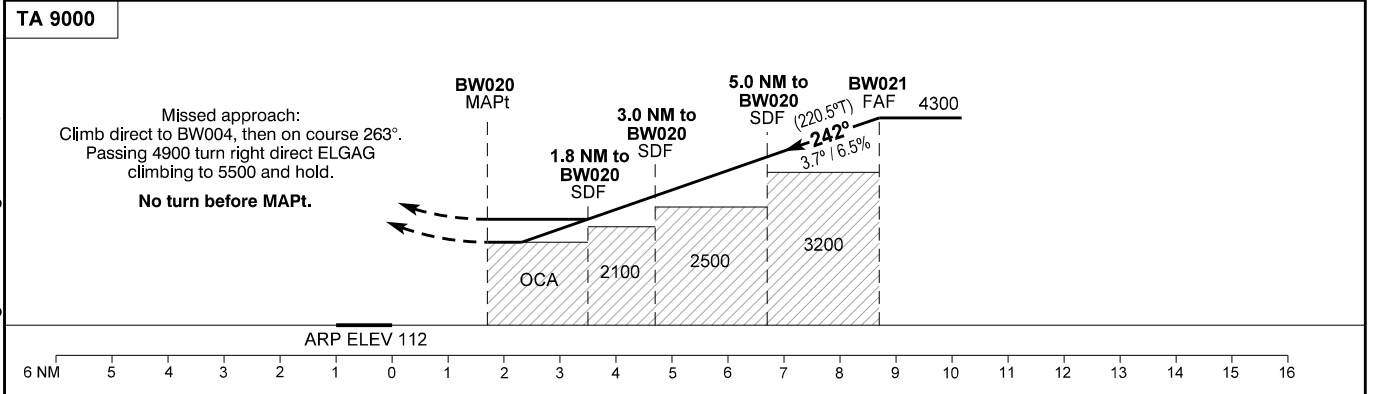
AD 2 - BGBW  
RNP A - 1  
Narsarsuaq



**WARNING - CAUTION**

1. This procedure may only be used during daylight and within the civil twilight periods.
2. Adhere strictly to prescribed procedure due to high surrounding terrain.
3. Correct altimeter for temperature.
4. Turbulence may be expected.
5. Procedure in airspace classified G.

Changes : Chart designator changed. VAR, tracks and bearings changed.



OCA (H)	A	B	Remarks	DIST to BW020 NM	6.0	5.0	4.0	3.0	2.0	1.0
LNAV - Circling*	1790 (1678)	2250 (2138)	*Only north of aerodrome	Altitude 3.7° descent	3900	3510	3120	2725	2330	1940

**Beware of State Minima for Narsarsuaq according to AD 2 - BGBW, paragraph 22, subparagraph 1.**

Time from FAF (BW021) to MAPt (BW020) - DIST 7.0 NM**							
GS	KT	80	100	120	140	160	180
Time	MIN:SEC	5:16	4:12	3:30	3:00	2:38	2:20
ROD 3.7°/ 6.5%	FT/MIN	525	655	785	915	1050	1180

\*\*Timing not authorized for defining the MAPt.