

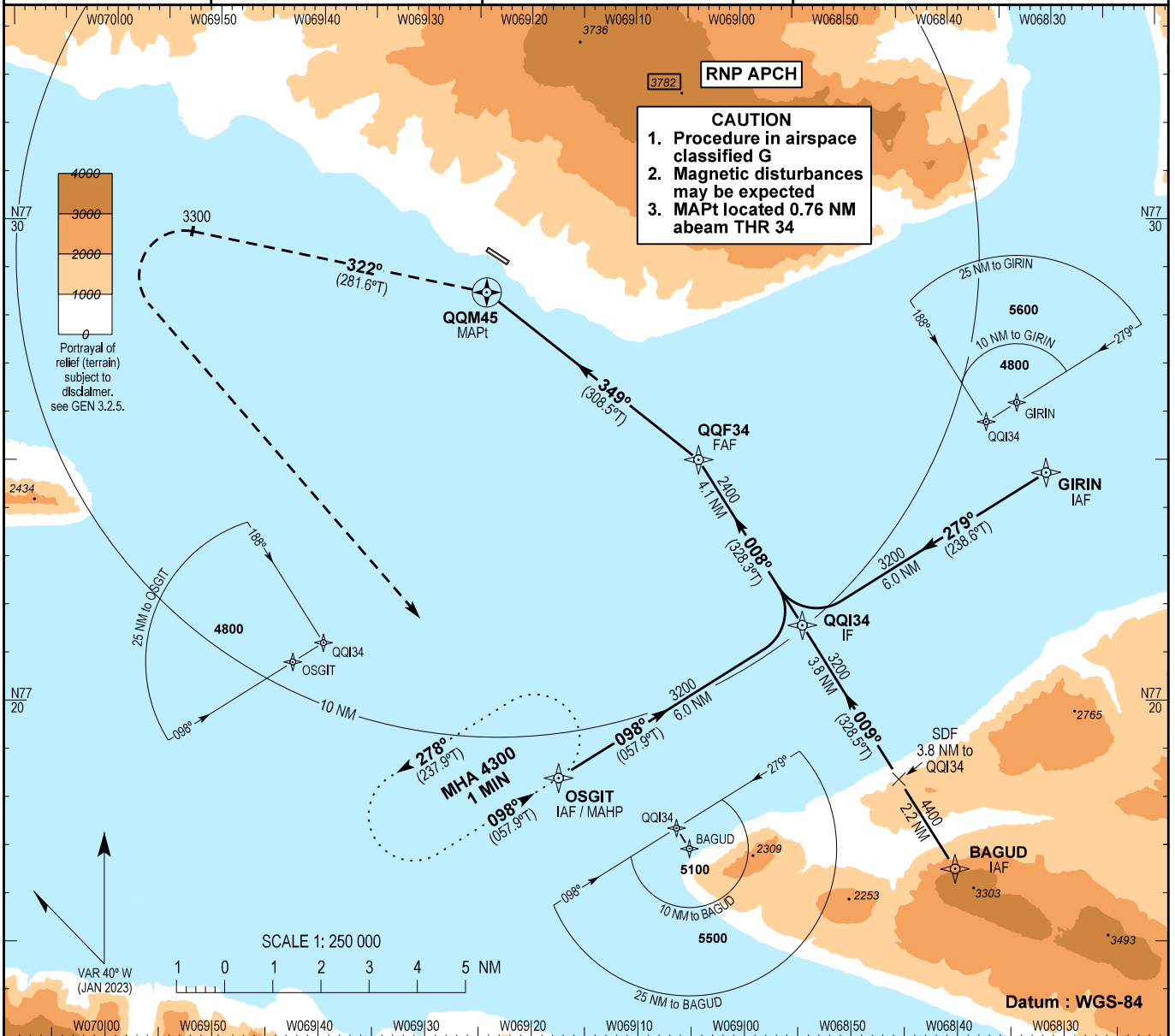
**INSTRUMENT
APPROACH
CHART - ICAO**

AD ELEV : 51

Bearings are magnetic (true)
ELEV, ALT and HGT in FT

Qaanaaq AFIS : 118.100

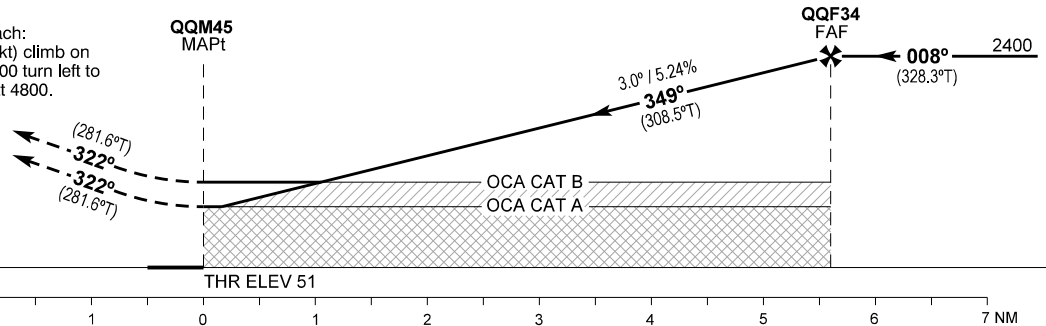
**AD 2 - BGQQ
RNP B - 1
Qaanaaq**



Changes : MAG bearing for IF to FAF leg corrected in profileview.

TA 6500

Missed approach:
Turn left (Max IAS 130 kt) climb on
course 322°, passing 3300 turn left to
OSGIT and hold at 4800.



OCA (H)	A	B	Remarks
Circling*	680 (629)	970 (919)	*West of aerodrome only

DIST to QQM45 NM	1.0	2.0	3.0	4.0	5.0
Altitude 3.0° Descent	930	1245	1560	1880	2200

Time from QQF34 to QQM45 - DIST 5.6 NM**						
GS	KT	80	100	120	140	160
Time	MIN:SEC	4:12	3:22	2:48	2:24	2:06
ROD 3.0° / 5.2%	FT/MIN	420	530	640	740	850

**Timing not authorized for defining the MAPt