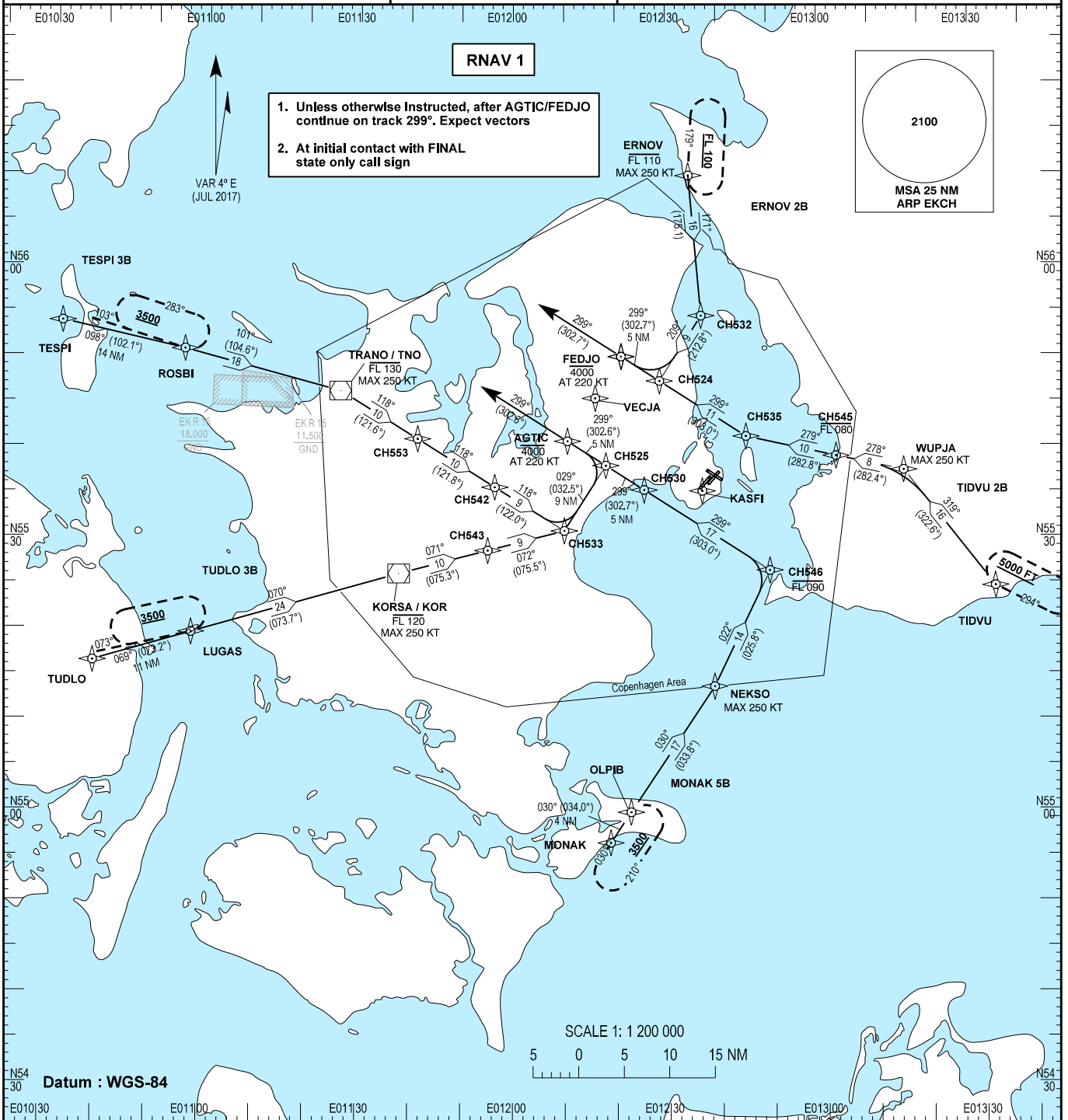


STANDARD ARRIVAL CHART - INSTRUMENT (STAR) - ICAO

Transition altitude 5000
Bearings are magnetic (true)
ELEV / ALT in FT
DIST in NM

AD 2 - EKCH
RNAV STAR RWY 12 - 1
København / Kastrup

TESPI 3B, TUDLO 3B, MONAK 5B, TIDVU 2B, ERNOV 2B



Description of waypoints see:
AD 2 - EKCH RNAV STAR RWY 12 - 2

Changes : CDA and KAS VOR/DME and WPT EPOXO withdrawn. WPT VECJA, KASFI and OLPB added. STAR MONAK changed. Note 1. changed.