

AERODROME CHART - ICAO

ARP : 56 18 00.06N 010 37 08.43E (TWR)

AD ELEV : 82 FT

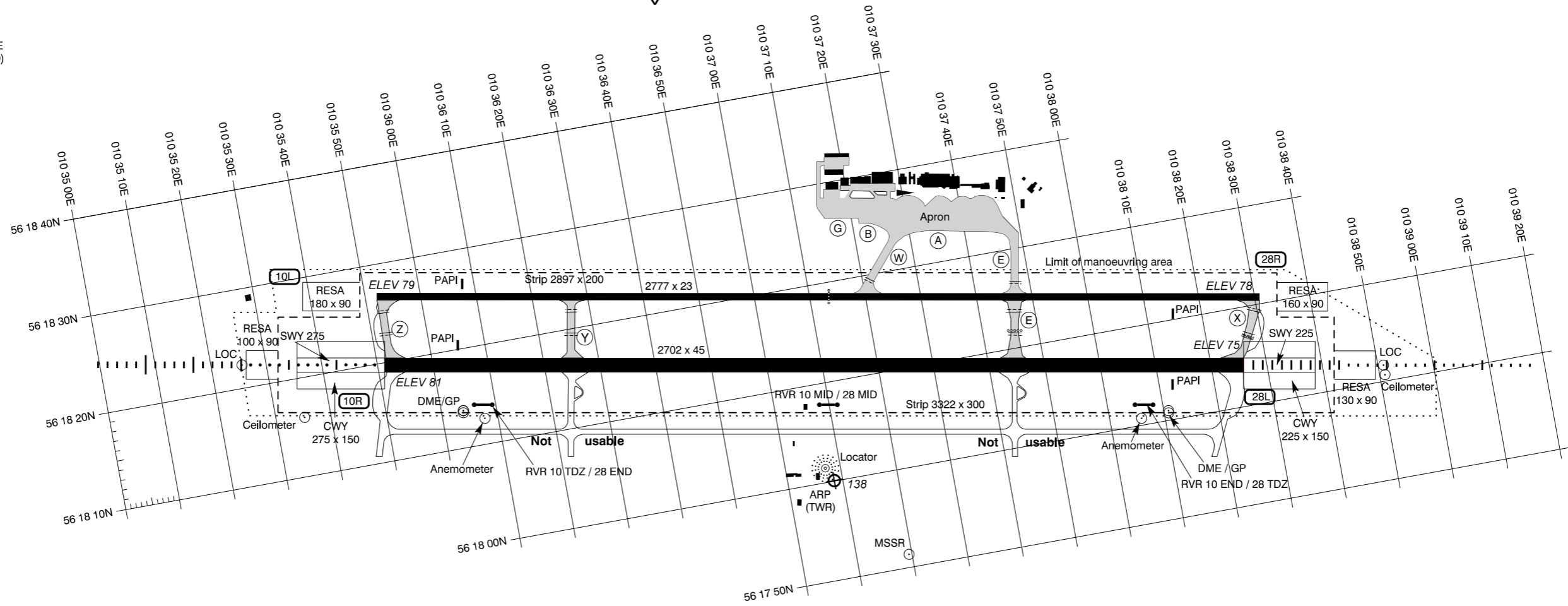
ELEV in FT
Dimensions / Distances in M

Aarhus APP : 119.275
Aarhus TWR : 118.525

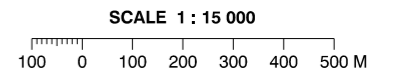
AD 2 - EKAH
ADC
Aarhus

RWY SLOPE : 10R / 28L less than 0.07 %

VAR 1.8° E
(JUL 2010)



Datum : WGS-84



Changes : DME 10R added.

RUNWAYS																TAXIWAYS							
NR	Direction	THR PSN	Pavement Strength	Day marking	Declared distances					APCH and RWY LGT (Unless otherwise stated lighting is LIH adjustable)							Width :	Pavement :	Strength :	Day marking :	Lighting :	Taxiing guidance system :	
					PSN TWY	TORA	TODA	ASDA	LDA	APCH	THR	TDZ	PAPI	Centre line	Edge	End							SWY
10R	100.3° GEO 098.5° MAG	56 18 19.77N 010 35 51.24E	Asphalt Concrete PCN 76 R / B / X / U	THR RWY NR TDZ Centre line Side stripes	Z	2702	2927	2927	2702	900 M White	Green		2.75°	2702 M 15 M Standard colour	2702 M White	Red	225 M Red	A, B, E, W, X, Y, Z : 23 M. G : 15 M.	A, B, E, G, W, Y : Asphalt X, Z : Asphalt / Concrete	E, W, Y : PCN 120 / F / B / W / T A, B : PCN 76 / F / B / X / U X : PCN 76 / R / B / X / T Z : PCN 30 / R / B / X / U G : PCN 76 / R / B / X / U	Centre line, Holding position	Blue edge LIL. RGL for RWY 10R / 28L at holding PSN TWY Z, Y, E and X, and RWY 10L / 28R north of RWY at holding PSN TWY E and W. Centre line standard colour on TWY E.	Sign boards
28L	280.3° GEO 278.5° MAG	56 18 04.17N 010 38 25.84E			X	2702	2977	2977	2702	900 M CAT II	Green	900 M White	2.75°	2702 M 15 M Standard colour	2702 M White	Red	275 M Red						
10L	100.3° GEO 098.5° MAG	56 18 26.76N 010 35 52.07E	Asphalt Concrete PCN 120 F / B / W / T	THR RWY NR Aiming point TDZ Centre line Side stripes	Z	2777	2777	2777	2777		Green LIL		3.00°		2777 M White LIL	Red LIL		A, B, E, W, X, Y, Z : 23 M. G : 15 M.	A, B, E, G, W, Y : Asphalt X, Z : Asphalt / Concrete	E, W, Y : PCN 120 / F / B / W / T A, B : PCN 76 / F / B / X / U X : PCN 76 / R / B / X / T Z : PCN 30 / R / B / X / U G : PCN 76 / R / B / X / U	Centre line, Holding position	Blue edge LIL. RGL for RWY 10R / 28L at holding PSN TWY Z, Y, E and X, and RWY 10L / 28R north of RWY at holding PSN TWY E and W. Centre line standard colour on TWY E.	Sign boards
28R	280.3° GEO 278.5° MAG	56 18 10.71N 010 38 30.95E			X	2777	2777	2777	2777		Green LIL		3.00°		2777 M White LIL	Red LIL							

OTHER : Secondary power supply : Yes, switch-over time CAT II 1 SEC.

OBSTACLES : All obstacles are marked by day and night