

**INSTRUMENT
APPROACH
CHART - ICAO**

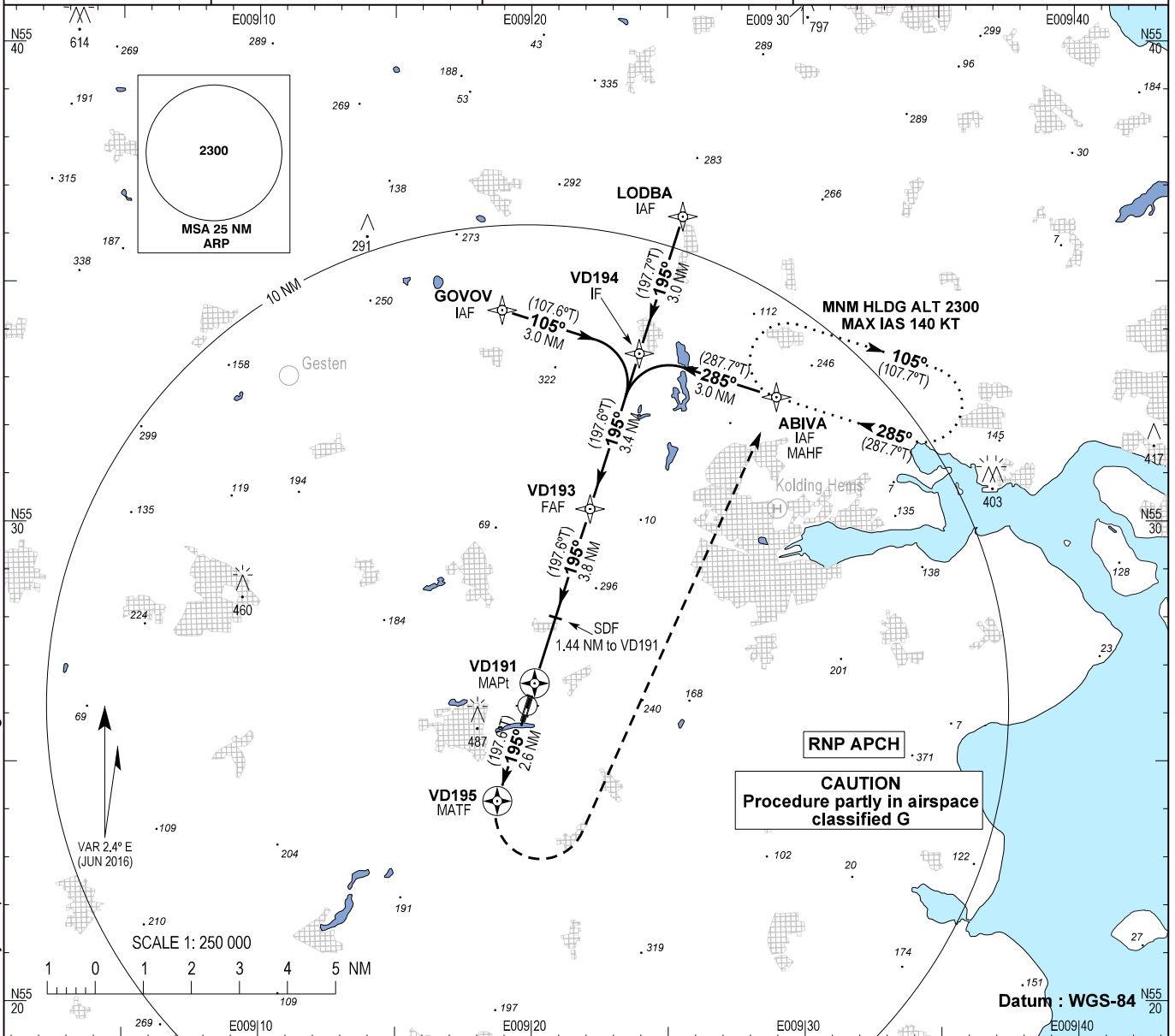
AD ELEV : 141

Bearings are magnetic (true)
ELEV, ALT and HGT in FT

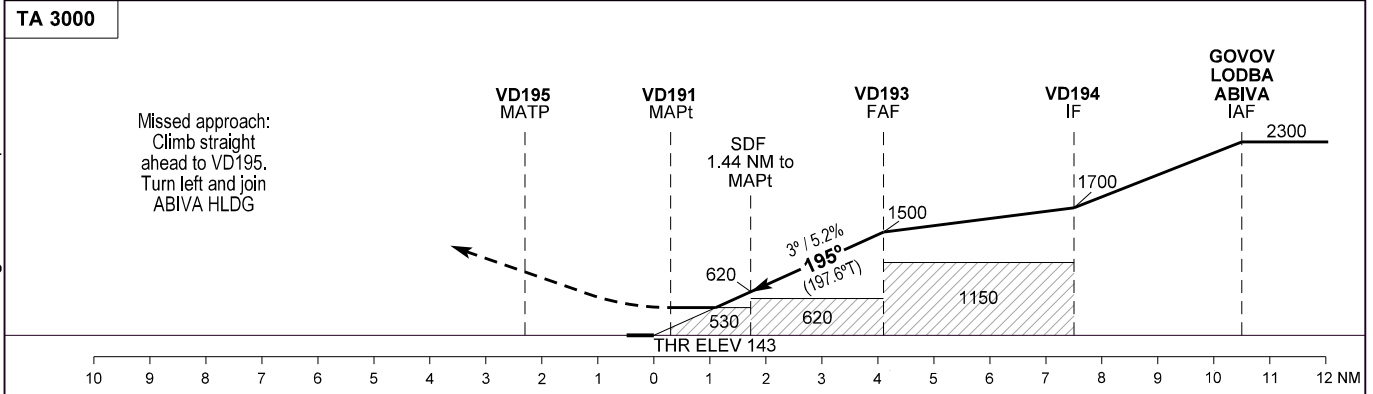
Skydstrup APP : 124.100 315.100

Vamdrup Information : 118.650

**AD 2 - EKVD
RNP RWY 19 - 1
Kolding / Vamdrup**



Changes : AD ELEV changed. Vamdrup Information FREQ and Skydstrup APP UHF FREQ changed.



| OCA (H) | A | | B | | SPECIAL CONDITIONS | | | | |
|-------------------------|-----------|-----------|-----------|-----------|-------------------------|------|------|------|---|
| | 530 (390) | 530 (390) | 690 (550) | 690 (550) | *East of aerodrome only | | | | |
| GS | 70 | 80 | 90 | 100 | 110 | 120 | 130 | 140 | |
| VD193-VD191 (3.82 NM)** | 3:16 | 2:52 | 2:33 | 2:17 | 2:05 | 1:55 | 1:46 | 1:38 | **Timing not authorized for defining the MAPt |
| Rate of Descent | 371 | 425 | 478 | 531 | 584 | 637 | 690 | 743 | |
| DIST to VD191 | NM | 1.0 | 2.0 | 3.0 | | | | | |
| DIST to THR 19 | NM | 1.3 | 2.3 | 3.3 | | | | | |
| Altitude 3.0° Descent | | 600 | 920 | 1240 | | | | | |