

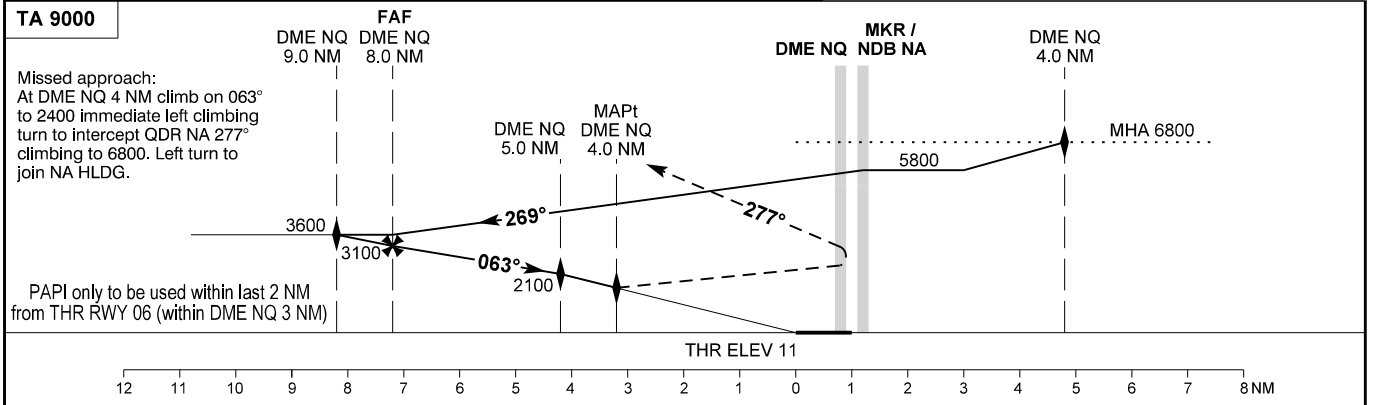
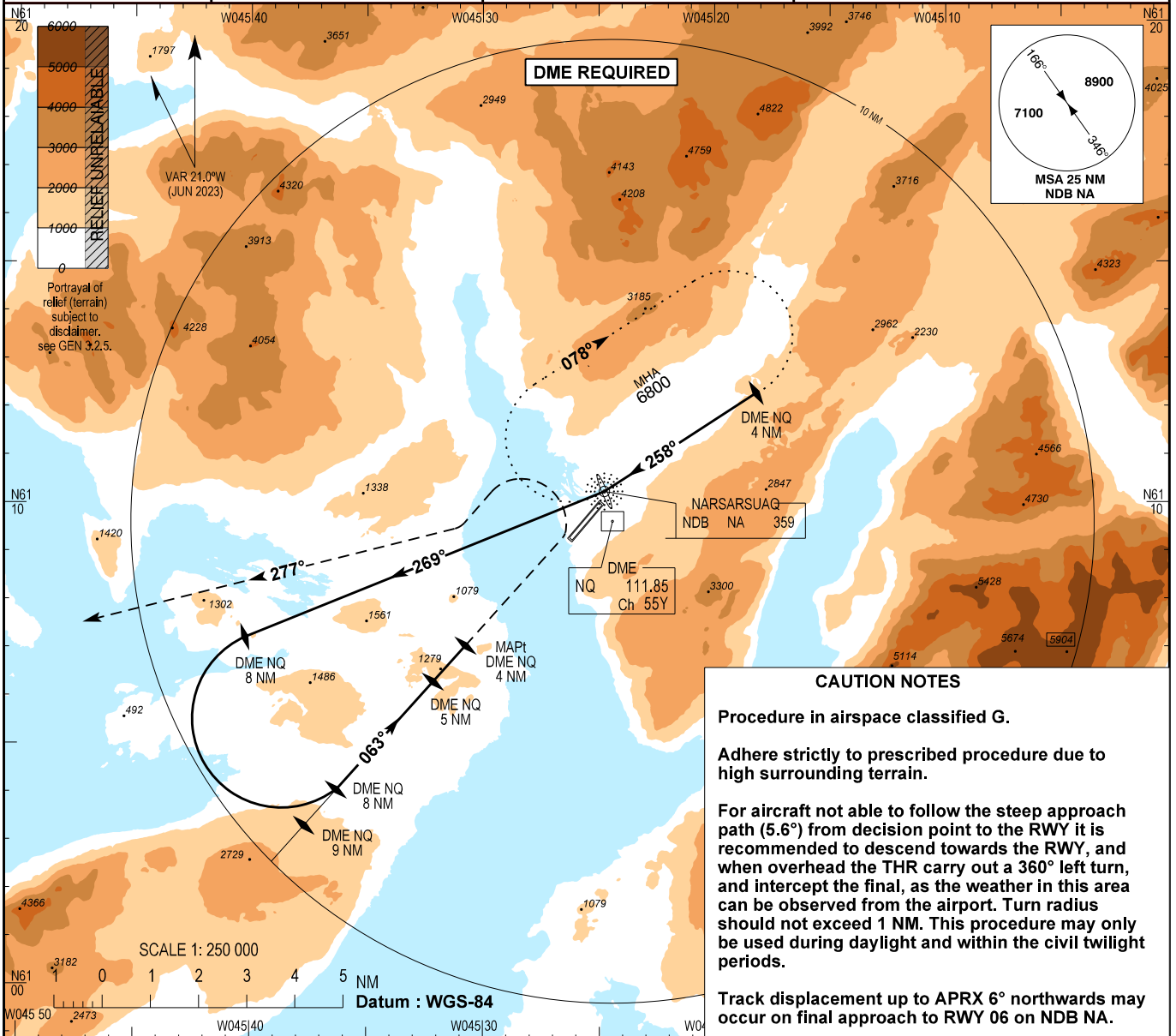
# INSTRUMENT APPROACH CHART - ICAO

AD ELEV : 112

Bearings are magnetic  
ELEV, ALT and HGT in FT

Narsarsuaq AFIS : 119.100

AD 2 - BGBW  
NDB Z RWY 06  
Narsarsuaq



OCA (H)	A	B	C	MNM missed APCH climb gradient	SPECIAL CONDITIONS
Straight in	1800 (1789)	1800 (1789)	1800 (1789)	4 %	MAX HLDG and APCH speed 220 KT IAS. MAX missed APCH turning speed 160 KT IAS. Circling N of RWY only. If visual contact is lost during visual circling: Intercept and follow QDR NA 277° as soon as possible climbing to 6800, then turn left and join NA HLDG
Straight in	1500 (1489)	1500 (1489)		6 %	
Circling	1800 (1688)	2400 (2288)	3500 (3388)		

DME NQ	1.0	2.0	3.0	4.0	5.0	6.0	7.0	8.0	9.0
DIST to THR 06	0	1	2	3	4	5	6	7	8
ALT	60	600	1200	1800	2100	2430	2760	3100	3600

State Minima : AD 2 - BGBW - 5

Changes : Editorial.