

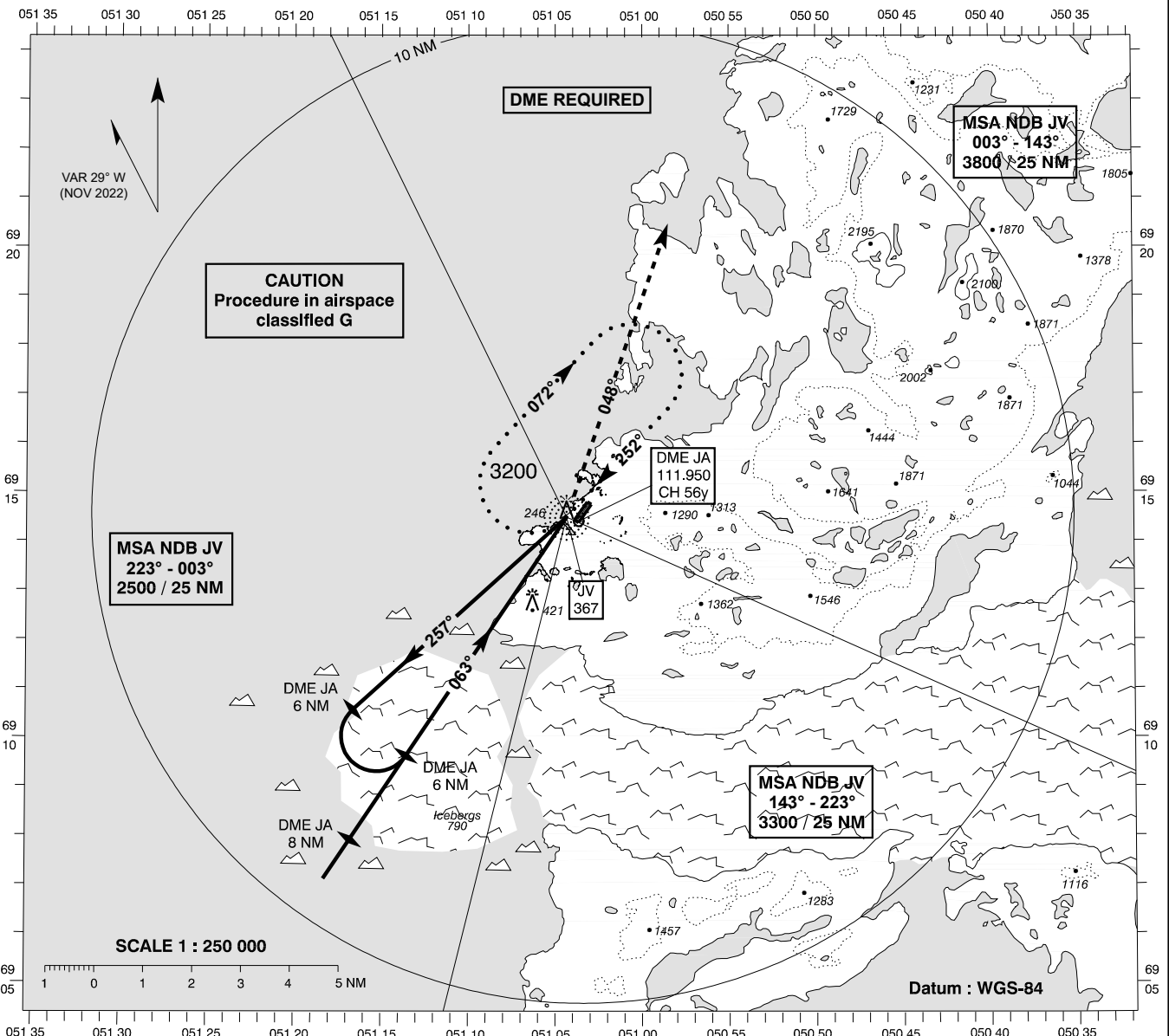
**INSTRUMENT
APPROACH
CHART - ICAO**

AD ELEV : 95

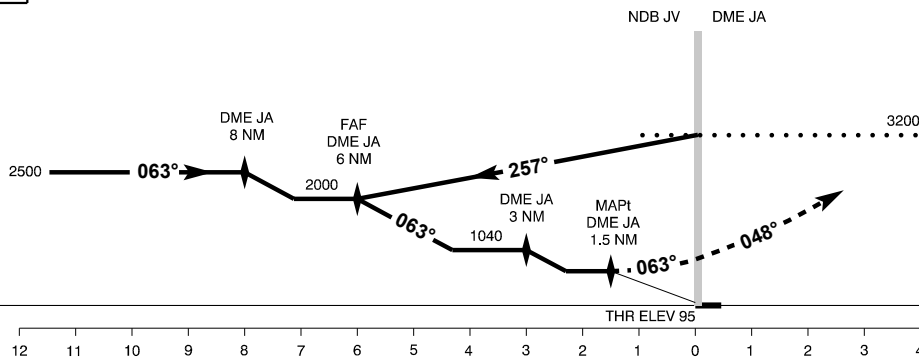
Bearings are magnetic
ELEV, ALT and HGT in FT

Ilulissat AFIS : 119,100

**AD 2 - BGJN
NDB Z RWY 06
Ilulissat**



TA 6000



Missed Approach :
At DME JA 1.5 NM climb to NDB JV and then on 048° to 3200.
Then left turn back to JV HLDG.
MNM missed APCH climb gradient 4%.

OCA (H)	A	B	SPECIAL CONDITIONS			
NDB	730 (640)	730 (640)	Pass DME JA 3 NM not below 1040			
Circling *	1100 (1010)	1100 (1010)	* N of RWY only			
DME JA	NM	1	2	3	4	5
DIST to THR	NM	0.9	1.9	2.9	3.9	4.9
ALT			1040	1300	1600	

Changes: VAR and MAG bearings changed. Chart designator changed from NDB+DME 07 to NDB Z RWY 06. Note "DME REQUIRED" added.