

INSTRUMENT APPROACH CHART - ICAO

AD ELEV : 17

Bearings are magnetic (true)
ELEV, ALT and HGT in FT

Copenhagen APP : 119.805
Kastrup TWR : 118.105 118.705
ATIS : 122.755

EGNOS
CH : 91971
E30A

AD 2 - EKCH
RNP RWY 30 - 1
København / Kastrup

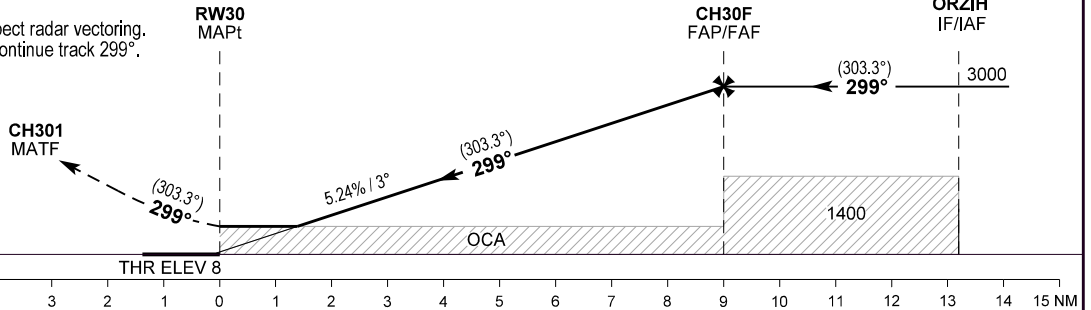


TA 5000

RDH 49

Missed approach:
Climb straight ahead to 3000 FT
inbound CH301.
Inform ATC and expect radar vectoring.
If passing CH301, continue track 299°.

Radio communication failure
during missed approach :
Climb to 3000 FT according
to missed approach procedure.
Maintain 3000 FT and track for
3 MIN, then turn right to ELDAB
for new APCH.



OCA (H)	A	B	C	D
LPV	141 (133)	149 (141)	159 (151)	168 (160)
LNAV / VNAV *	400 (383)	410 (393)	410 (402)	420 (412)
LNAV	510 (500)			
Circling **	560 (550)	590 (580)	1010 (1000)	1010 (1000)

SPECIAL CONDITIONS

* Not to be used below -25°C or above 61°C.

** Circling for CAT C and D is not approved N of AD between
center line RWY 22R and center line RWY 12.

DIST to RW30	NM	2	3	4	5	6	7	8	9
Nominal altitude	3° APCH	700	1020	1350	1670	2000	2330	2670	3000

Changes : RNAV transition revised. WPT HOFFO and COPHO withdrawn from chart. New WPT HAXHI and ELDAB added. OCA (H) LNAV/VNAV changed. OBST EKCH ATC TWR added. Editorial changes.