

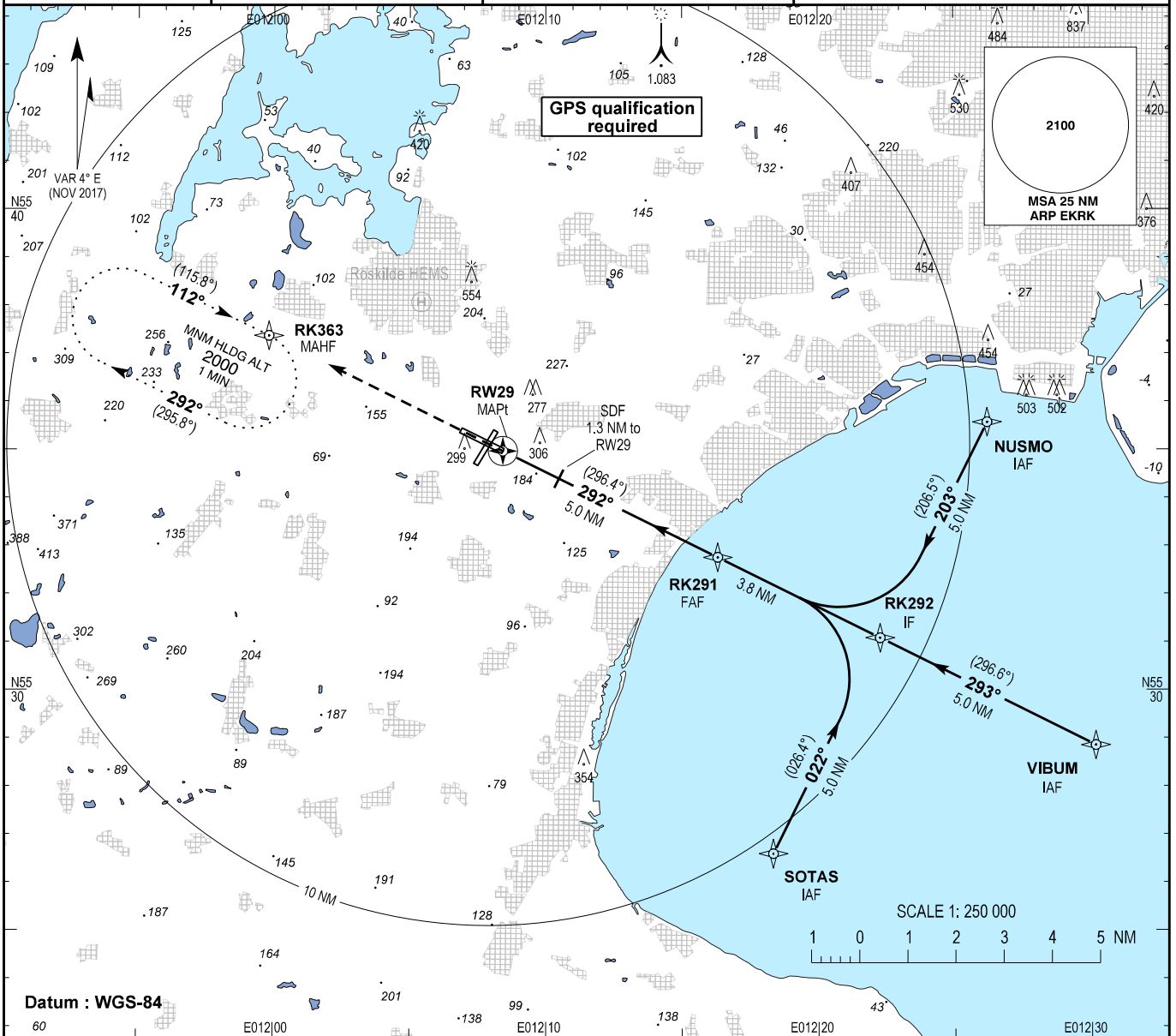
INSTRUMENT APPROACH CHART - ICAO

AD ELEV : 146

Bearings are magnetic (True)
ELEV, ALT and HGT in FT

Roskilde APP : 125.530
Roskilde TWR : 118.905 119.655
ATIS : 123.805

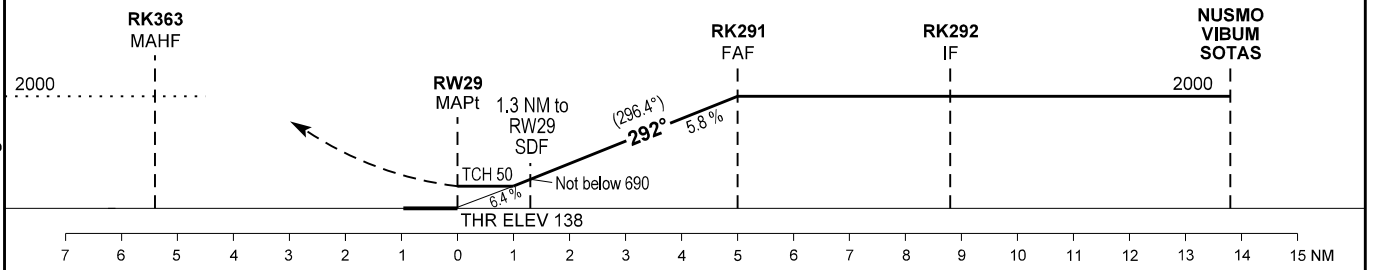
AD 2 - EKRK
RNAV (GNSS) RWY 29 - 1
København / Roskilde



TA 5000

Due to the proximity to EKCH, this procedure will normally NOT be available.

Missed approach :
Climb to 2000 to
MAHF RK363 and hold.



Changes : FREQ changed.

OCA (H)	A	B	C	D
LNAV	550 (410)	550 (410)	550 (410)	550 (410)
Circling	610 (470)	850 (710)	950 (810)	950 (810)
DIST to THR	1	2	3	4
NOM ALT	550	910	1275	1635
				2000

SPECIAL CONDITIONS

Pass 1,3 NM before RW29 at MNM 690