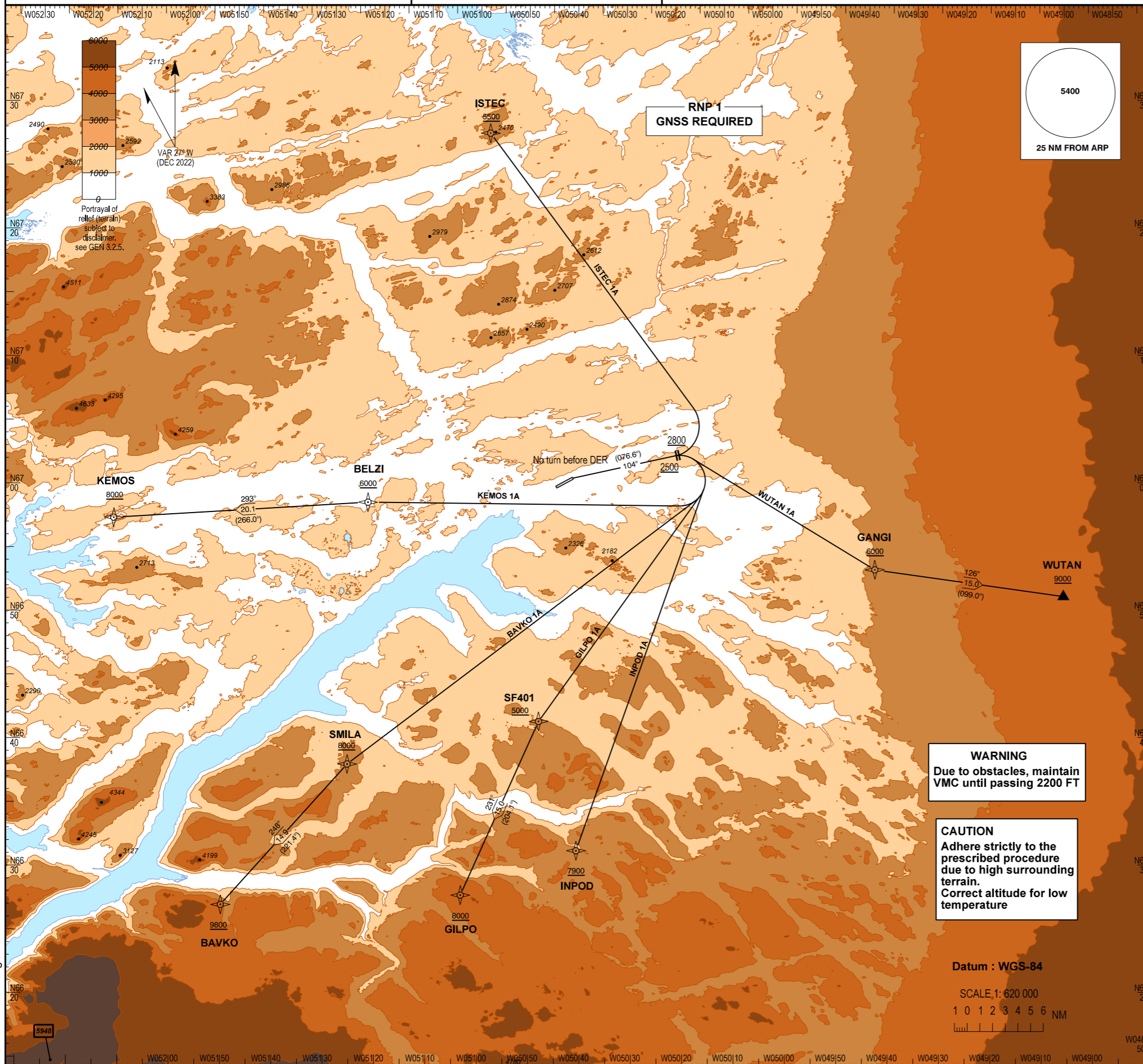


STANDARD DEPARTURE CHART - INSTRUMENT (SID) - ICAO

Transition altitude : 7000
 Bearings are magnetic (true)
 ELEV / ALT in FT
 DIST in NM

AD 2 - BGSF
 RNP 1 SID RWY 09 - 1
 Kangerlussuaq
 ISTECA 1A, BAVKO 1A, GILPO 1A, INPOD 1A, KEMOS 1A, WUTAN 1A



GS KT	100	150	200	250	300
5.0% Climb gradient FT/MIN	505	760	1010	1265	1520
3.3% Climb gradient FT/MIN	335	500	670	835	1000

WARNING
 Due to obstacles, maintain VMC until passing 2200 FT

CAUTION
 Adhere strictly to the prescribed procedure due to high surrounding terrain.
 Correct altitude for low temperature

Datum : WGS-84
 SCALE 1: 620 000
 1 0 1 2 3 4 5 6 NM

Changes : New chart.