

**INSTRUMENT  
APPROACH  
CHART - ICAO**

AD ELEV : 17

Bearings are magnetic (true)  
ELEV, ALT and HGT in FT

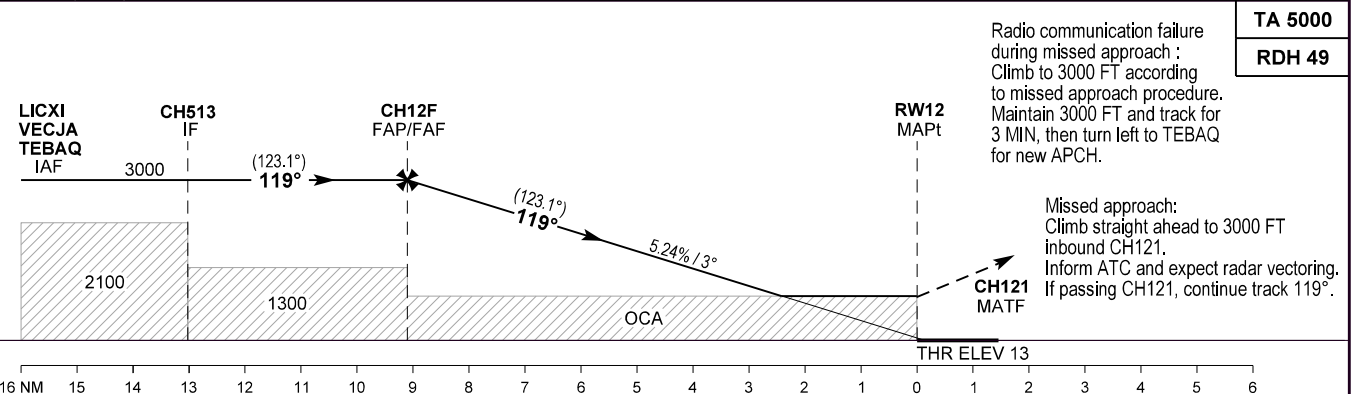
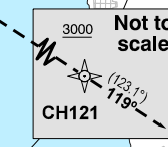
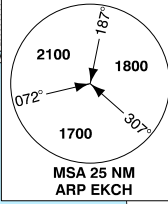
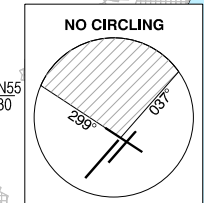
Copenhagen APP : 119.805

Kastrup TWR : 118.105 118.705

ATIS : 122.755

EGNOS  
CH : 63468  
E12A

**AD 2 - EKCH  
RNP RWY 12 - 1  
København / Kastrup**



Radio communication failure during missed approach : Climb to 3000 FT according to missed approach procedure. Maintain 3000 FT and track for 3 MIN, then turn left to TEBAQ for new APCH.

Missed approach: Climb straight ahead to 3000 FT inbound CH121. Inform ATC and expect radar vectoring. If passing CH121, continue track 119°.

**TA 5000  
RDH 49**

	16 NM	15	14	13	12	11	10	9	8	7	6	5	4	3	2	1	0	1	2	3	4	5	6	
OCA (H)				A	B	C	D																	
LPV				150 (137)	158 (145)	169 (156)	184 (171)																	
LNAV / VNAV *				340 (322)	350 (331)	360 (341)	370 (351)																	
LNAV				790 (780)																				
Circling **				790 (780)	790 (780)	1010 (1000)	1010 (1000)																	

**SPECIAL CONDITIONS**

\* Not to be used below -25°C or above 61°C.

\*\* Circling for CAT C and D is not approved N of AD between center line RWY 22R and center line RWY 12.

DIST to RW12	NM	2	3	4	5	6	7	8	9.1
Nominal altitude		710	1020	1350	1680	2010	2340	2670	3000

Changes : Spelling of TEBAQ corrected to TEBAQ.