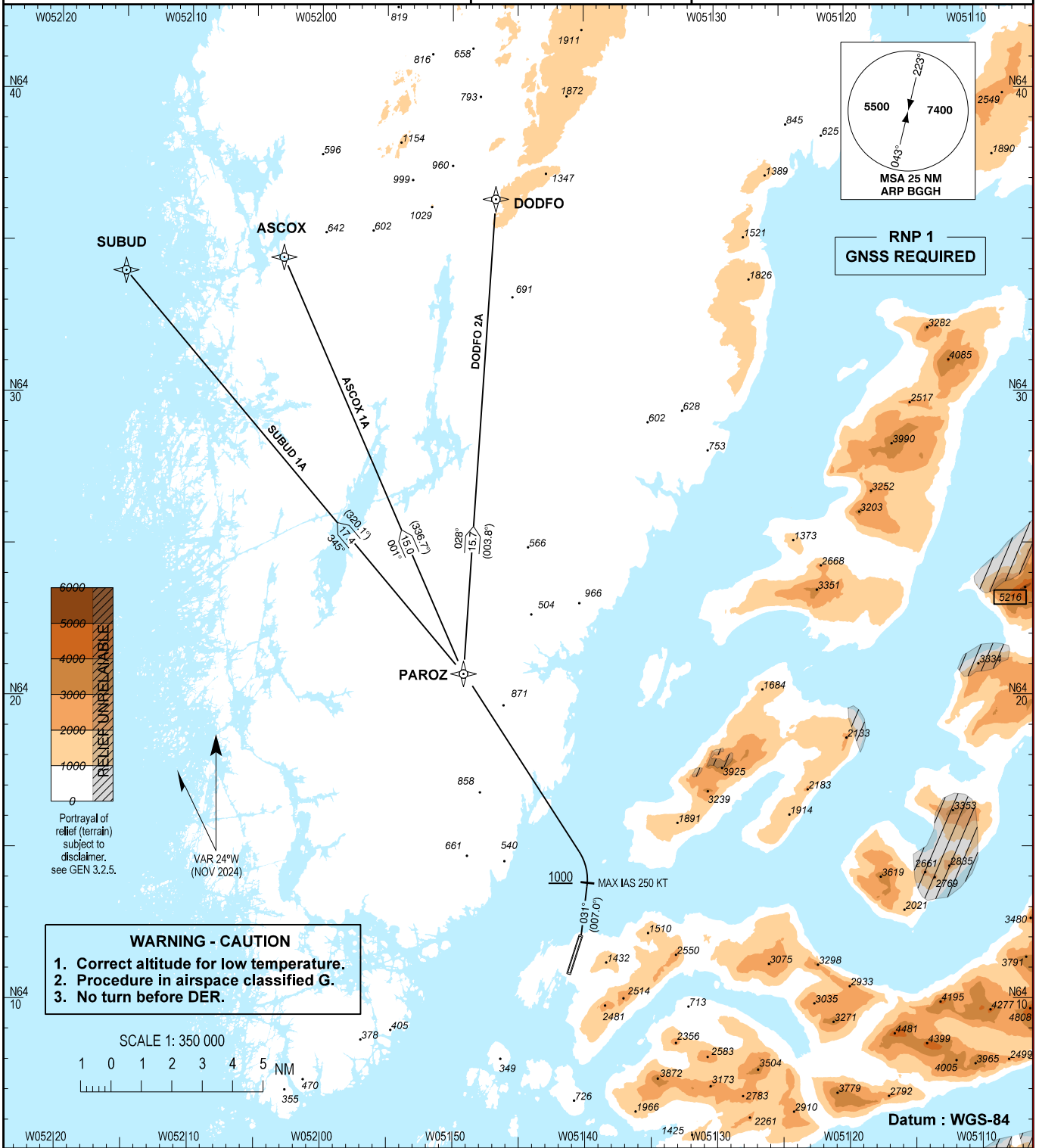


**STANDARD DEPARTURE CHART -
INSTRUMENT (SID) - ICAO**

TA : 7000 FT
Bearings are magnetic (true)
ELEV / ALT in FT
DIST in NM

AD 2 - BGGH
RNP SID RWY 04 N - 1
Nuuk
SUBUD 1A, ASCOX 1A, DODFO 2A



Changes : WPT GH503 withdrawn. WPT PAROZ added.

GS (KT)	100	150	200	250	300
4.0% Climb gradient ft/min	405	610	810	1015	1215
3.3% Climb gradient ft/min	335	505	670	835	1005