

# INSTRUMENT APPROACH CHART - ICAO

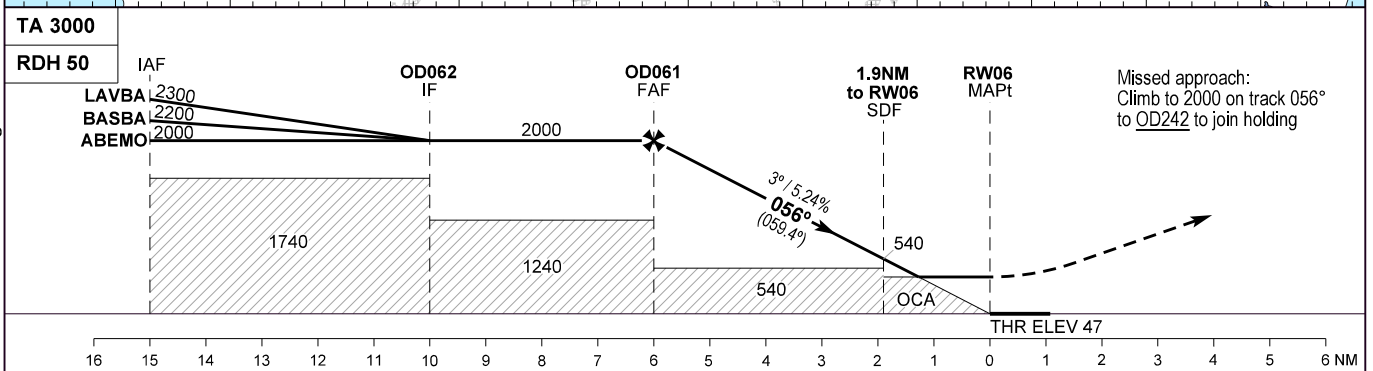
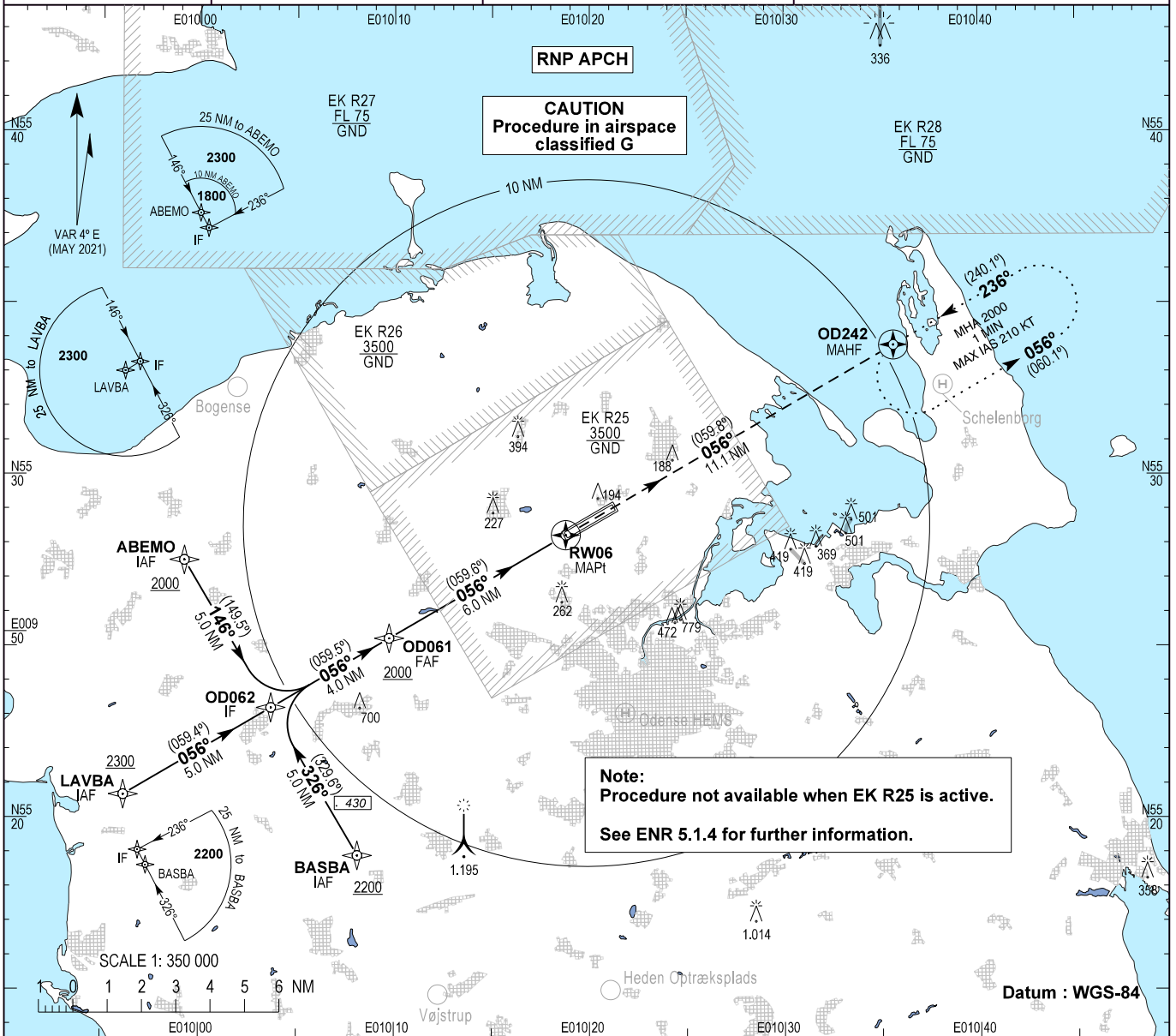
AD ELEV : 56

Odense Information : 119.530

AD 2 - EKOD  
RNP RWY 06 - 1  
Odense / Hans Christian Andersen Airport

Bearings are magnetic (true)  
ELEV, ALT and HGT in FT

EGNOS : CH 49463  
E06A



OCA (H)	A	B	C	D	SPECIAL CONDITIONS		
LPV	297 (250)	297 (250)	297 (250)	297 (250)	* Not to be used under -25° C ** Cross 1.9 NM before RW06 not below 540 *** North of RWY only		
LNAV / VNAV *	340 (290)	350 (300)	360 (310)	370 (320)			
LNAV **	450 (400)	450 (400)	450 (400)	450 (400)	****Timing not authorized for defining the MAPt		
Circling ***	500 (450)	650 (590)	900 (840)	920 (860)			
GS	60	80	100	120	140	160	180
Time FAF - RW06****	05:58	04:29	03:35	02:59	02:34	02:14	01:59
Rate of Descent	318	425	531	637	743	849	955
DIST to RW06	NM	5.0	4.0	3.0	2.0	1.0	
ALT		1690	1370	1050	730	415	

Changes : Odense Information FREQ changed.