

**INSTRUMENT
APPROACH
CHART - ICAO**

AD ELEV : 82

Bearings are magnetic (true)
ELEV, ALT and HGT in FT

Aarhus APP : 119.280

Aarhus TWR : 118.530

ATIS : 125.155

EGNOS channel : 45346

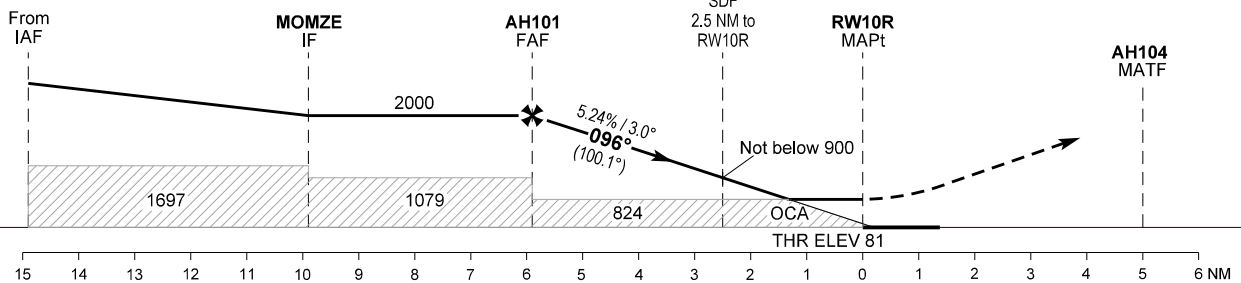
**AD 2 - EKAH
RNP RWY 10R - 1
Aarhus**



TA 3000

RDH 50

Missed approach:
Climb on track to overfly AH104.
Turn right direct to GINUB to hold
at 4000 FT



OCA (H)	A	B	C	D
LPV	216 (135)	223 (142)	233 (152)	242 (161)
LNAV / VNAV *	360 (280)	380 (300)	380 (300)	400 (320)
LNAV **	480 (400)	480 (400)	480 (400)	480 (400)
Circling	570 (490)	680 (600)	1060 (980)	1180 (1100)

SPECIAL CONDITIONS

* Not to be used below -25°C

** Cross 2.5 NM before RW10R not below 900 FT.

Timing not authorized for defining MAPt.

PAPI 2.75° - not aligned with instrument procedure vertical path.

ALINI HLDG not to be used when EK R 45 is active.

DIST to RW10R	NM	5	4	3	2	1
Nominal altitude		1720	1405	1090	770	450

Changes : OBST Aarhus, MindeT kran 566 FT added. Editorial change.