

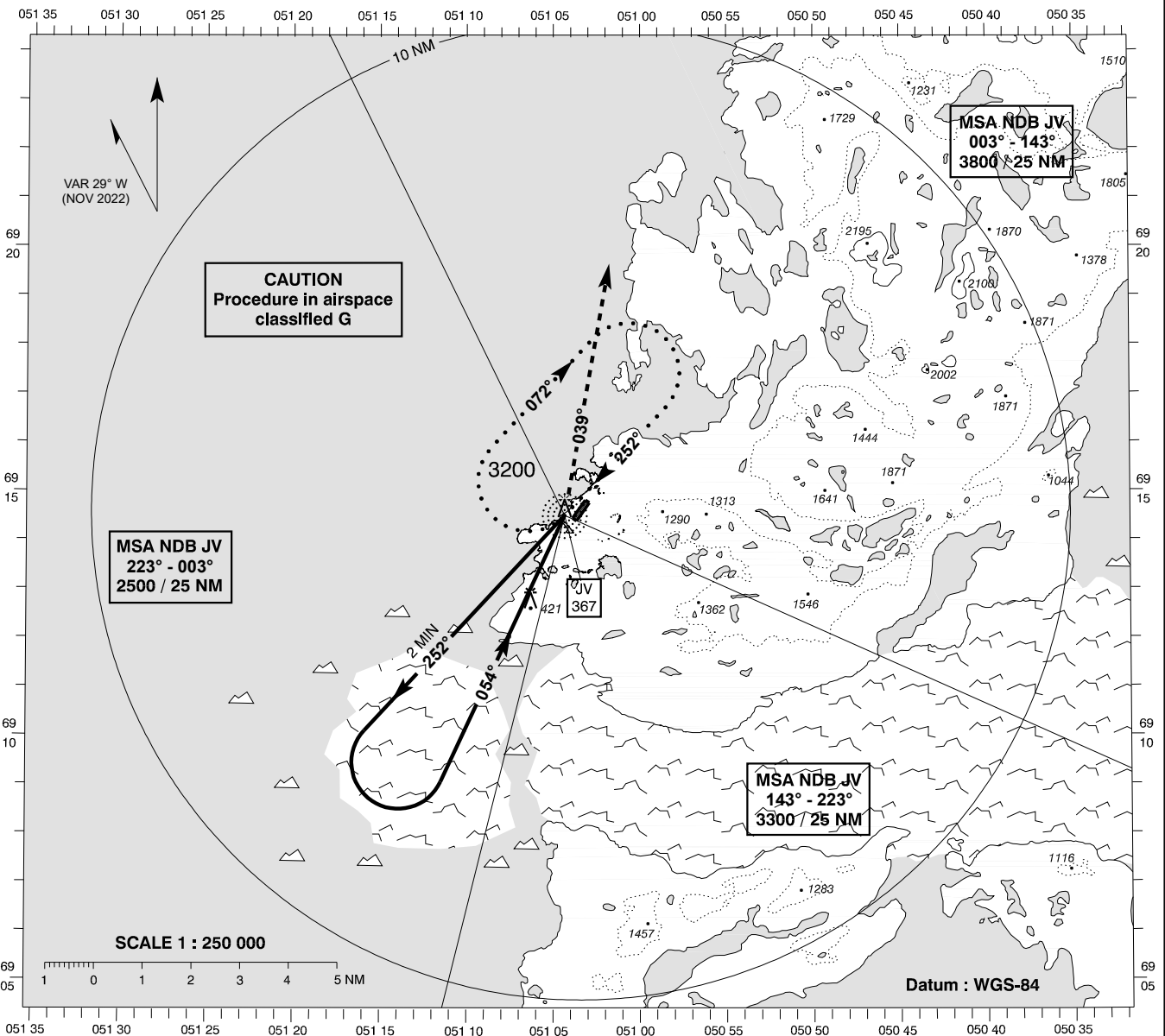
**INSTRUMENT
APPROACH
CHART - ICAO**

AD ELEV : 95

Bearings are magnetic
ELEV, ALT and HGT in FT

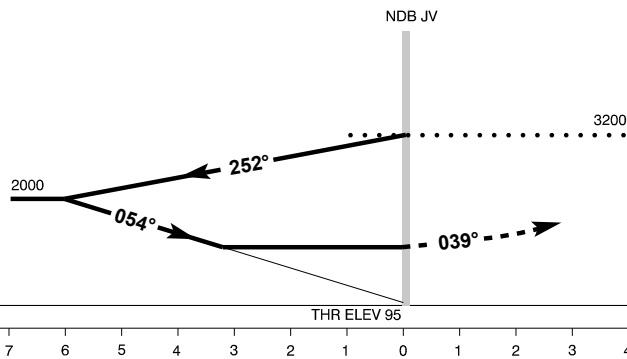
Ilulissat AFIS : 119,100

**AD 2 - BGJN
NDB Y RWY 06
Ilulissat**



Changes: VAR and MAG bearings changed. Chart designator changed from NDB 07 to NDB Y RWY 06.

TA 6000



Missed Approach :
Climb on track 039° to 3200.
Then left turn back to
JV HLDG.

OCA (H)	A	B	SPECIAL CONDITIONS
NDB	1090 (995)	1090 (995)	
Circling *	1100 (1010)	1100 (1010)	* N of RWY only