

AERODROME CHART - ICAO

ARP : 55 37 04.50N 012 39 21.50E
INT RWY 04R / 22L - 12 / 30

AD ELEV : 17 FT

ELEV in FT
Dimensions / Distances in M

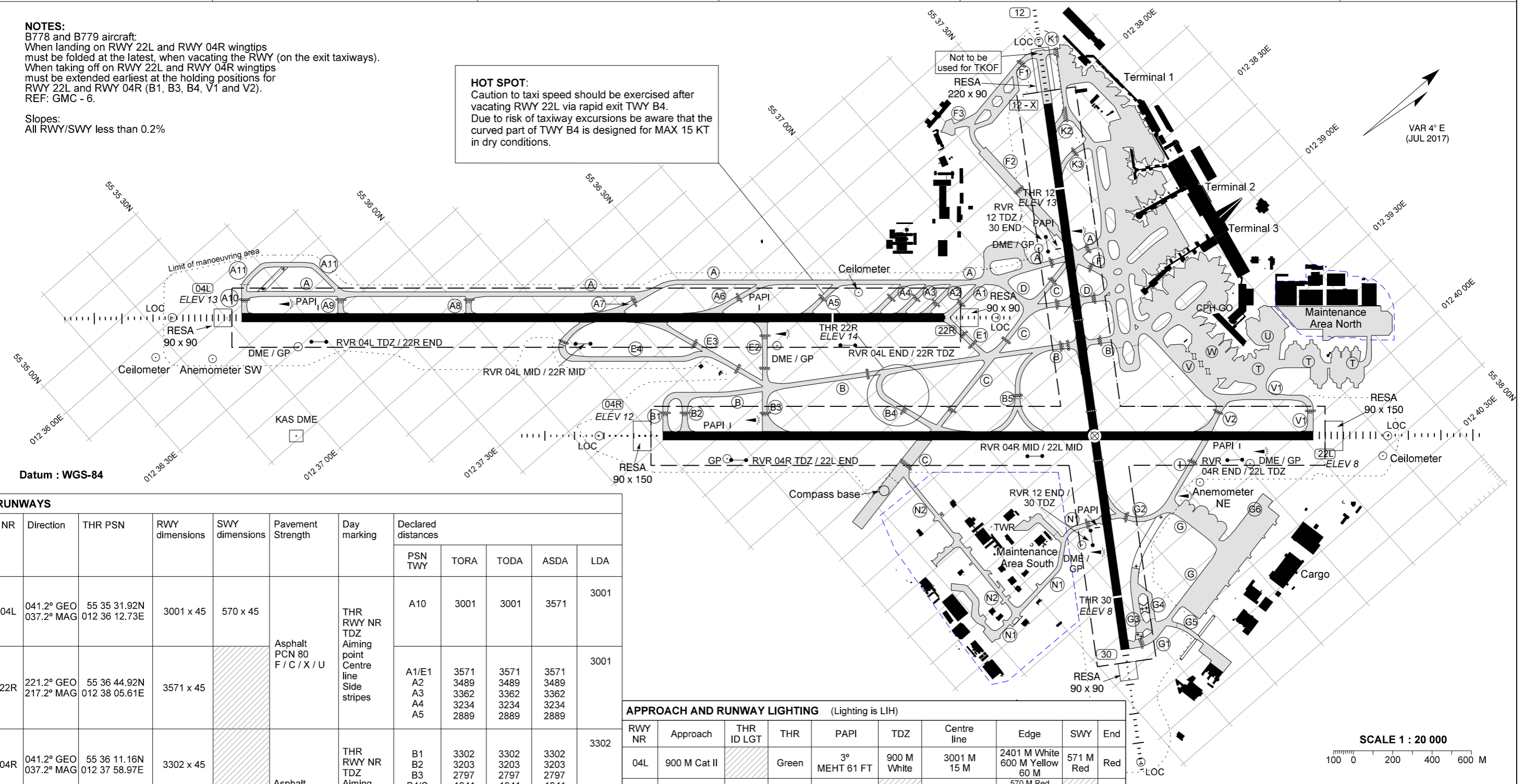
Copenhagen APP : 119.805
Kastrup TWR : 118.105 118.580 118.705 119.355 121.830
ATIS : 122.755 (ARR) 122.855 (DEP)

AD 2 - EKCH
ADC
København / Kastrup

NOTES:
B778 and B779 aircraft:
When landing on RWY 22L and RWY 04R wingtips must be folded at the latest, when vacating the RWY (on the exit taxiways).
When taking off on RWY 22L and RWY 04R wingtips must be extended earliest at the holding positions for RWY 22L and RWY 04R (B1, B3, B4, V1 and V2).
REF: GMC - 6.

Slopes:
All RWY/SWY less than 0.2%

HOT SPOT:
Caution to taxi speed should be exercised after vacating RWY 22L via rapid exit TWY B4.
Due to risk of taxiway excursions be aware that the curved part of TWY B4 is designed for MAX 15 KT in dry conditions.



Datum : WGS-84

RUNWAYS

NR	Direction	THR PSN	RWY dimensions	SWY dimensions	Pavement Strength	Day marking	Declared distances				
							PSN TWY	TORA	TODA	ASDA	LDA
04L	041.2° GEO 037.2° MAG	55 35 31.92N 012 36 12.73E	3001 x 45	570 x 45	Asphalt PCN 80 F / C / X / U	THR RWY NR TDZ Aiming point Centre line Side stripes	A10	3001	3001	3571	3001
22R	221.2° GEO 217.2° MAG	55 36 44.92N 012 38 05.61E	3571 x 45			A1/E1 A2 A3 A4 A5	3571 3489 3362 3234 2889	3571 3489 3362 3234 2889	3571 3489 3362 3234 2889	3001	
04R	041.2° GEO 037.2° MAG	55 36 11.16N 012 37 58.97E	3302 x 45		Asphalt PCN 80 F / C / X / U	THR RWY NR TDZ Aiming point Centre line Side stripes	B1 B2 B3 B4/C	3302 3203 2797 1941	3302 3203 2797 1941	3302 3203 2797 1941	3302
22L	221.2° GEO 217.2° MAG	55 37 31.48N 012 40 03.29E	3302 x 45			V1 V2	3302 2787	3302 2787	3302 2787	3302	
12	123.2° GEO 119.2° MAG	55 37 26.94N 012 38 20.82E	2800 x 45		Concrete + Asphalt PCN 80 F / C / X / U	THR RWY NR TDZ Aiming point Centre line Side stripes	12 - X K2 K3 D	2800 2699 2481 1798	2800 2699 2481 1798	2800 2699 2481 1798	2365
30	303.2° GEO 299.2° MAG	55 36 49.87N 012 40 01.01E	2365 x 45	300 x 45		G1	2365	2365	2665	2095 300 M SWY AVBL	

APPROACH AND RUNWAY LIGHTING (Lighting is LIH)

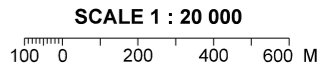
RWY NR	Approach	THR ID LGT	THR	PAPI	TDZ	Centre line	Edge	SWY	End
04L	900 M Cat II		Green	3° MEHT 61 FT	900 M White	3001 M 15 M	2401 M White 600 M Yellow 60 M	571 M Red	Red
22R	900 M White	FLG White	Green	3° MEHT 59 FT		3571 M 15 M	570 M Red 2401 M White 600 M Yellow 60 M		Red
04R	720 M White		Green	3° MEHT 57 FT		3302 M 15 M	2702 M White 600 M Yellow 60 M		Red
22L	840 M Cat II and III		Green	3° MEHT 60 FT	900 M White	3302 M 15 M	2702 M White 600 M Yellow 60 M		Red
12	900 M White	FLG White	Green	3° MEHT 49 FT			435 M Red 1765 M White 600 M Yellow 30 M		Red
30	900 M White		Green	3° MEHT 60 FT			270 M Red 1495 M White 600 M Yellow 30 M	300 M Red	Red

Secondary power supply : Yes, all RWY switch-over time 1 SEC at RVR below 800 M, otherwise MAX 15 SEC.

TAXIWAYS (Except TWY N1 and TWY N2)

Width : 23, G4 27.5.
Pavement : Concrete or asphalt.
Strength : PCN 80 / F / C / X / U.
Day marking : Centre line, Side stripes (where deemed necessary), Holding positions.
Lighting : Edge - blue; Centre line - green; Centre line on exit taxiways within ILS critical/sensitive areas and centre line within 60 M from RWY centre line - standard colour. Stop bars, RGL. Deicing TWY A and TWY B : Exit facility light.

Taxiing guidance system : Sign boards.
Rapid exit taxiways : A6, A7, B4 and E3.



Changes : Aircraft stands E76, E77 and E78 changed.