

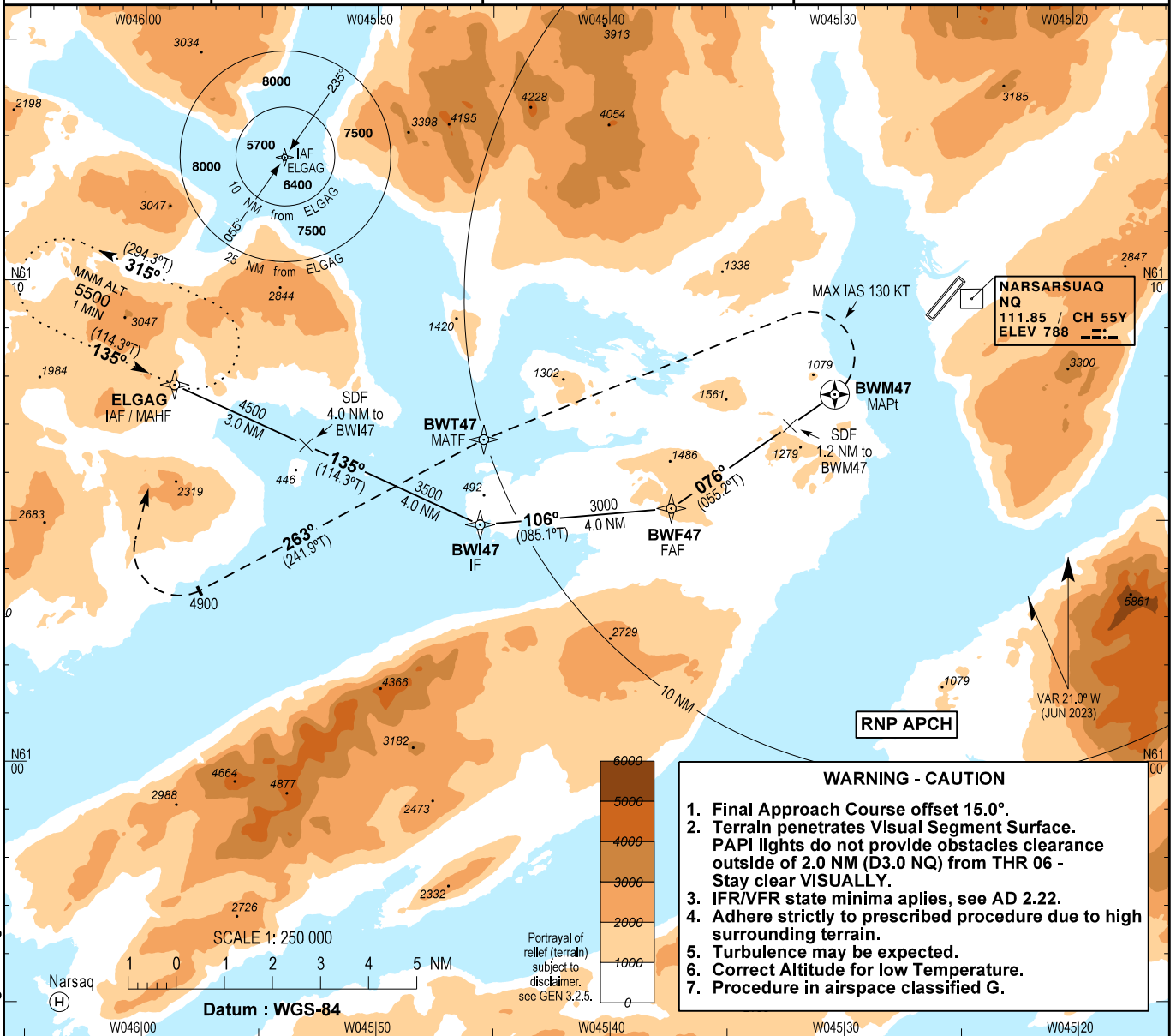
**INSTRUMENT  
APPROACH  
CHART - ICAO**

AD ELEV : 112

Bearings are magnetic (true)  
ELEV, ALT and HGT in FT

Narsarsuaq AFIS : 119.100

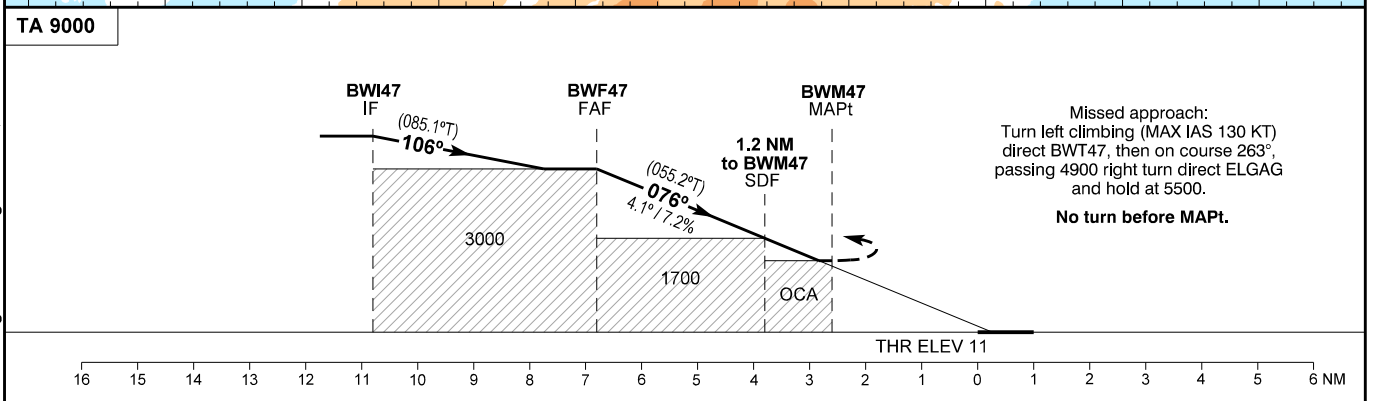
**AD 2 - BGBW  
RNP Z RWY 06 - 1  
Narsarsuaq**



**WARNING - CAUTION**

1. Final Approach Course offset 15.0°.
2. Terrain penetrates Visual Segment Surface. PAPI lights do not provide obstacles clearance outside of 2.0 NM (D3.0 NQ) from THR 06 - Stay clear VISUALLY.
3. IFR/VFR state minima applies, see AD 2.22.
4. Adhere strictly to prescribed procedure due to high surrounding terrain.
5. Turbulence may be expected.
6. Correct Altitude for low Temperature.
7. Procedure in airspace classified G.

Changes : Chart designator changed. VAR, tracks and bearings changed.



Missed approach:  
Turn left climbing (MAX IAS 130 KT)  
direct BWT47, then on course 263°,  
passing 4900 right turn direct ELGAG  
and hold at 5500.  
**No turn before MAPt.**

OCA (H)		A	B	Remarks	DIST to BWM47 NM	4.0	3.0	2.0	1.0
LNAV	Climb 2.5%	1500 (1489)	1600 (1589)	Terrain penetrates visual segment surface outside 2.0 NM from THR 06 (D3.0 NQ)	Altitude 4.1° descent	2930	2495	2060	1625
	Climb 4.0%	1400 (1389)	1500 (1489)						
	Climb 5.0%	1350 (1339)	1400 (1389)						
Circling*		1660 (1548)	2250 (2138)	*Only north of aerodrome					
Time from FAF (BWF47) to MAPt (BWM47) - DIST 4.2 NM**									
GS	KT	80	100	120	140	160	180		
Time	MIN:SEC	3:07	2:30	2:05	1:47	1:33	1:23	**Timing not authorized for defining the MAPt.	
ROD 4.1° / 7.17%	FT/MIN	580	725	870	1015	1160	1305		