

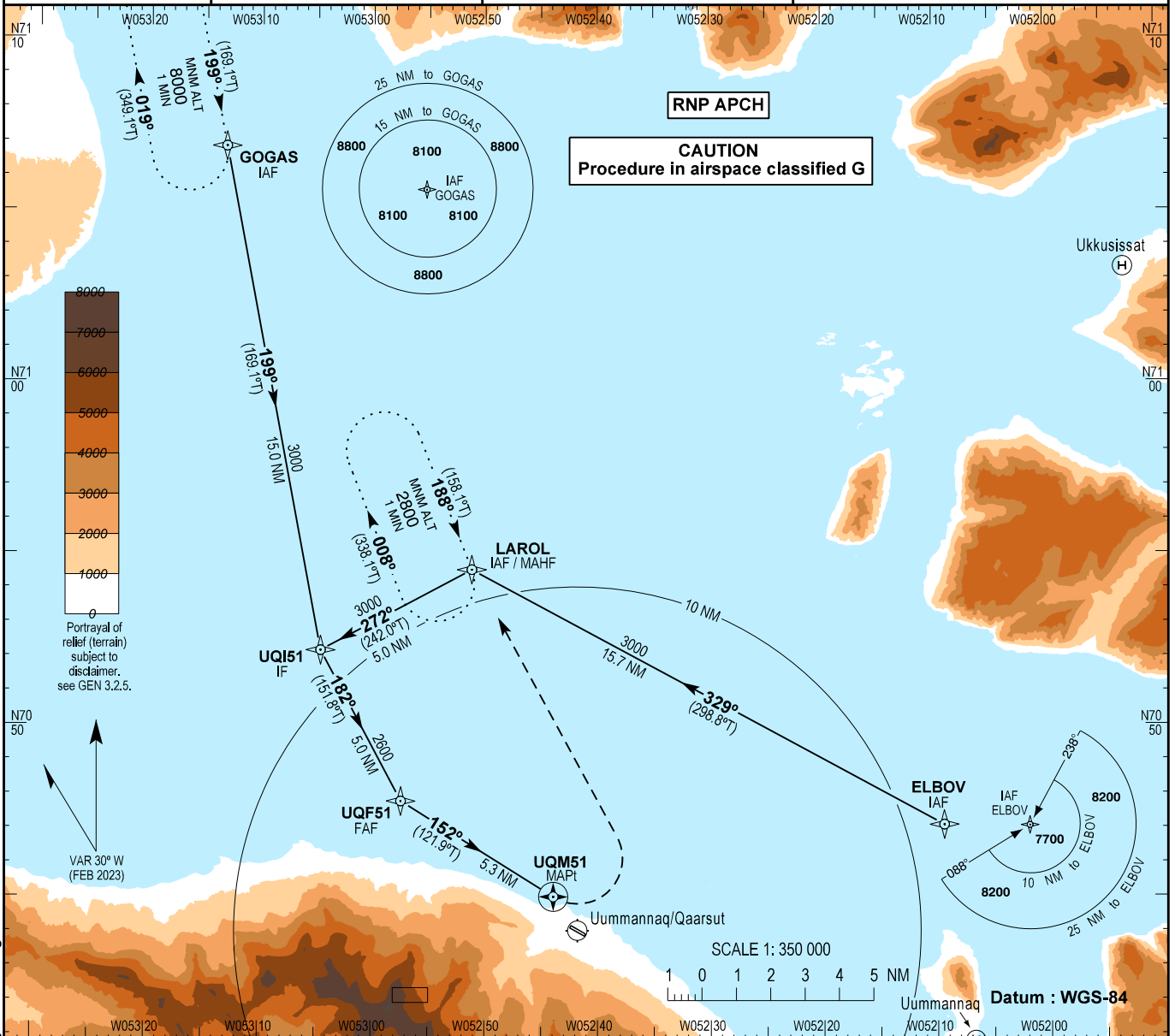
# INSTRUMENT APPROACH CHART - ICAO

AD ELEV : 289

Bearings are magnetic (true)  
ELEV, ALT and HGT in FT

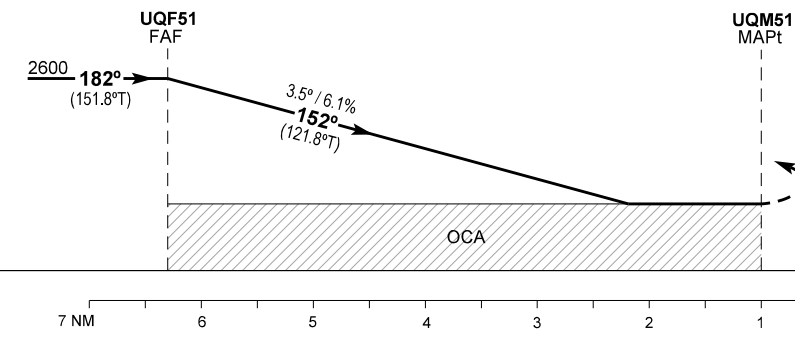
Qaarsut AFIS : 119.500

AD 2 - BGUQ  
RNP B - 1  
Uummanaq / Qaarsut



Changes : VAR and MAG bearings changed. Chart designator changed.

TA 10000



Missed approach:  
Climbing turn left (Max IAS 130 kt),  
direct LAROL, hold at 3000.

OCA (H)		A	B	Remarks	DIST to UQM51 NM	4.0	3.0	2.0	1.0
LNAV-Circling	Climb 2.5%	1100 (811)	1280 (991)	Only northeast of aerodrome	Altitude 3.50° Descent	2130	1760	1390	1020
	Climb 4.0%	1050 (761)	1240 (951)						

Time from FAF (UQF51) to MAPt (UQM51) - DIST 5.3 NM\*\*

GS	KT	80	100	120	140	160	180
Time	MIN:SEC	3:57	3:10	2:38	2:16	1:59	1:45
ROD 3.5°/6.1%	FT/MIN	500	660	740	870	990	1110

\*\*Timing not authorized for defining the MAPt.