

INSTRUMENT APPROACH CHART - ICAO

AD ELEV : 17

Bearings are magnetic (true)
ELEV, ALT and HGT in FT

Copenhagen APP : 119.805

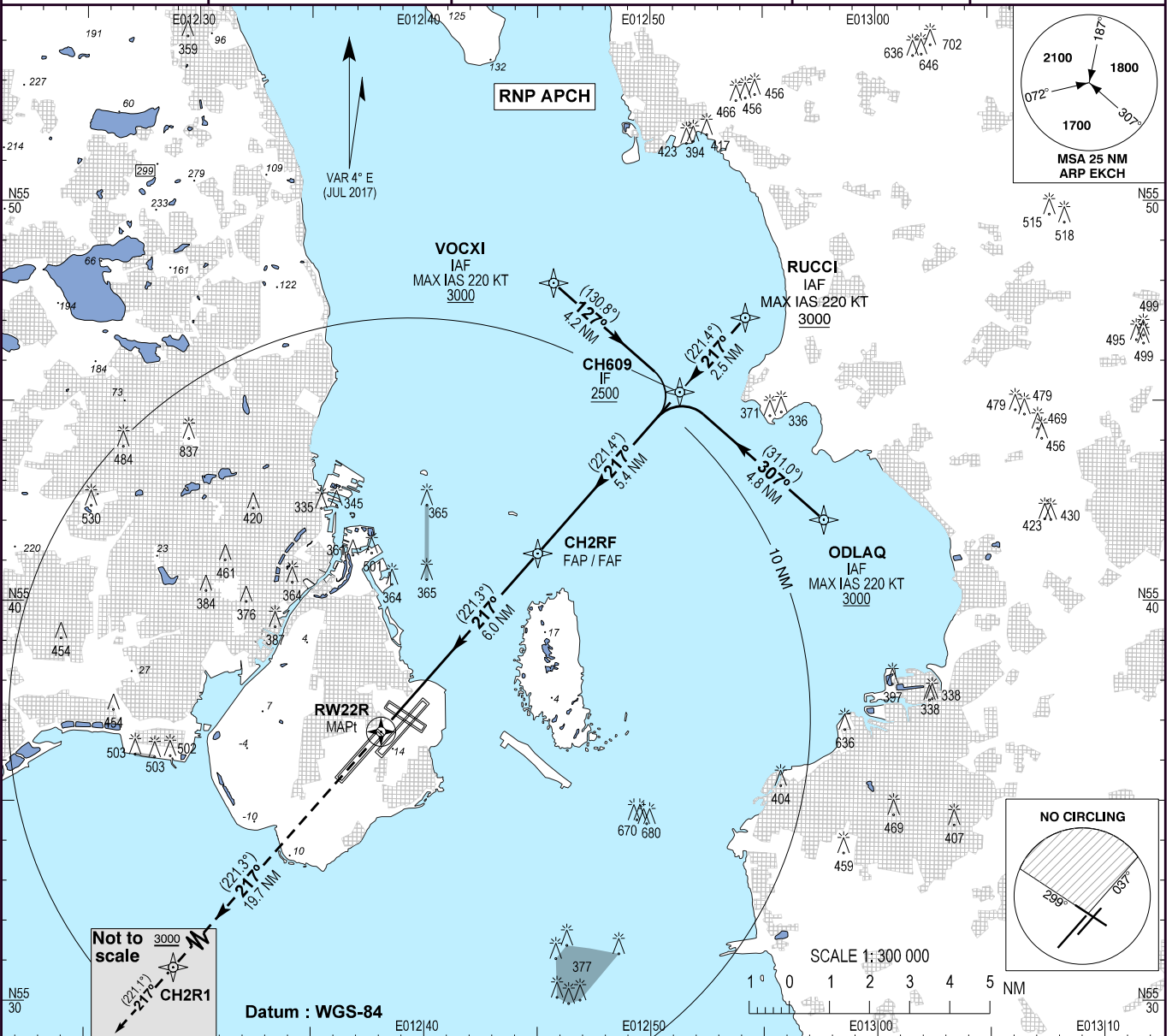
Kastrup TWR : 118.105 118.705

ATIS : 122.755

EGNOS
CH : 65172
E22B

AD 2 - EKCH
RNP RWY 22R - 1
København / Kastrup

Changes : RNAV transition revised. WPT ABEGJ and ADOVI withdrawn from chart. New WPT CH609, VOXXI and ODLAQ added. OCA (H) Circling A and B changed. Editorial changes.

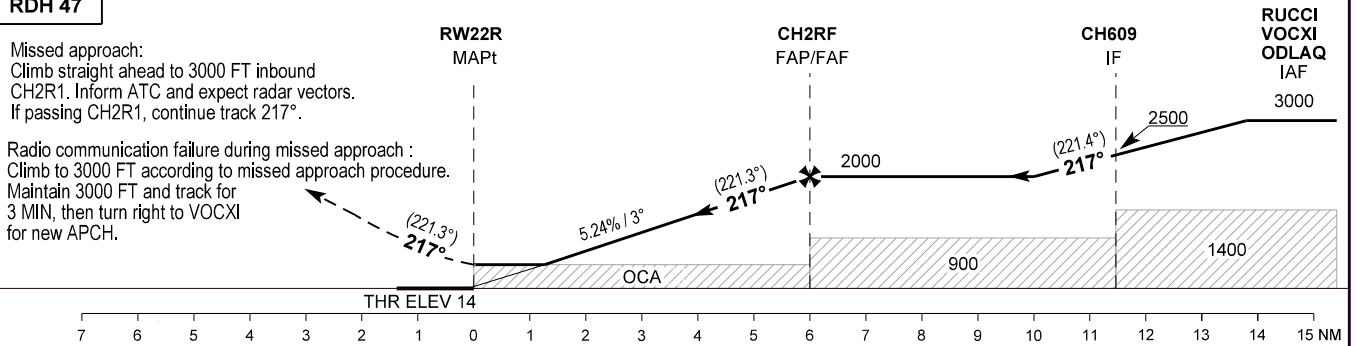


TA 5000

RDH 47

Missed approach:
Climb straight ahead to 3000 FT inbound
CH2R1. Inform ATC and expect radar vectors.
If passing CH2R1, continue track 217°.

Radio communication failure during missed approach :
Climb to 3000 FT according to missed approach procedure.
Maintain 3000 FT and track for
3 MIN, then turn right to VOXXI
for new APCH.



OCA (H)	A	B	C	D
LPV	167 (153)	177 (163)	186 (172)	196 (182)
LNAV / VNAV *	353 (339)	363 (349)	373 (359)	383 (369)
LNAV	450 (430)			
Circling **	560 (540)	590 (570)	1010 (990)	1010 (990)

SPECIAL CONDITIONS

* Not to be used below -25°C or above 61°C.

** Circling for CAT C and D is not approved N of AD between
center line RWY 22R and center line RWY 12.

DIST to RW22R	NM	2	3	4	5	6
Nominal altitude		700	1020	1350	1670	2000