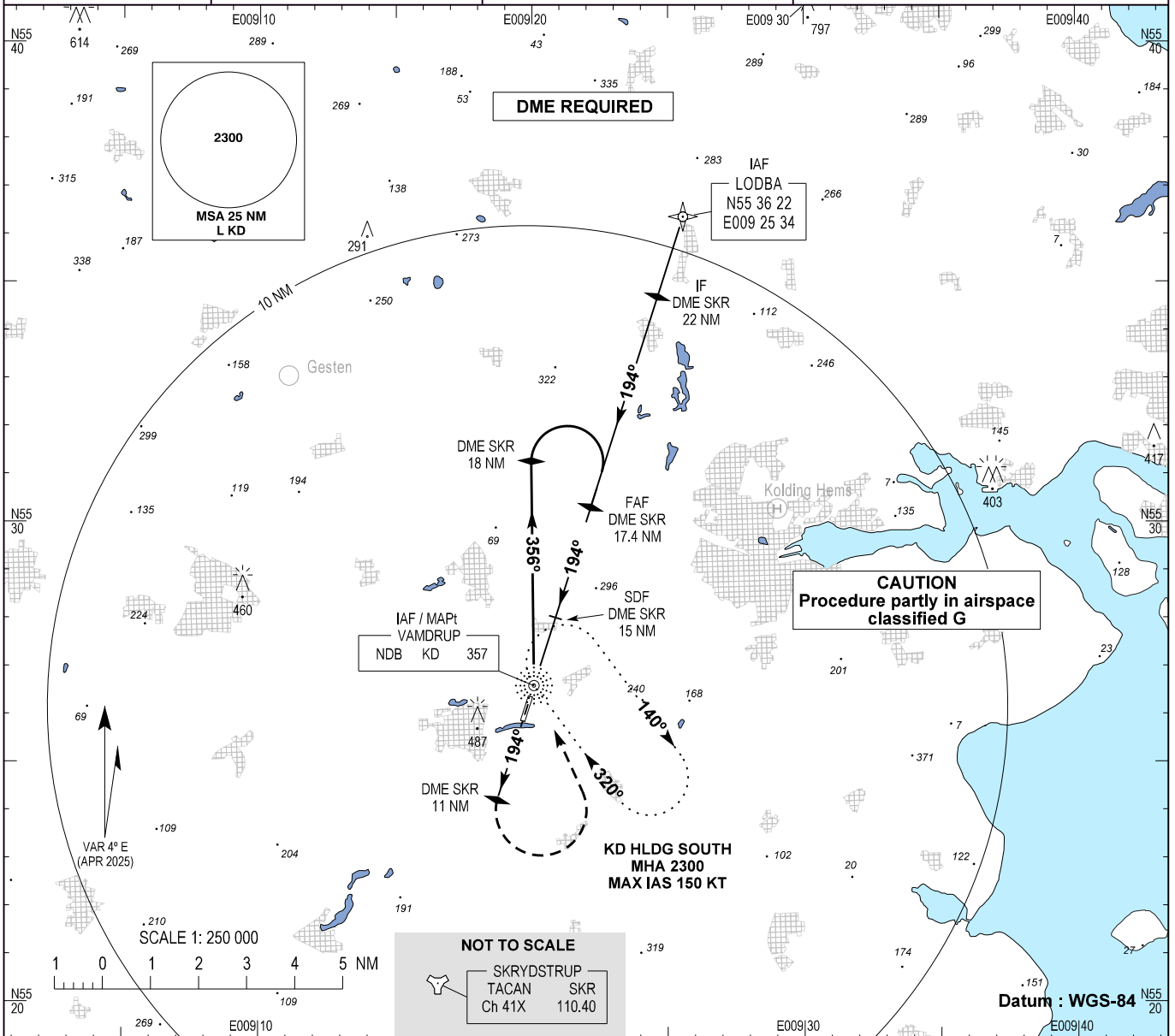


INSTRUMENT APPROACH CHART - ICAO

AD ELEV : 143
 Bearings are magnetic
 ELEV, ALT and HGT in FT

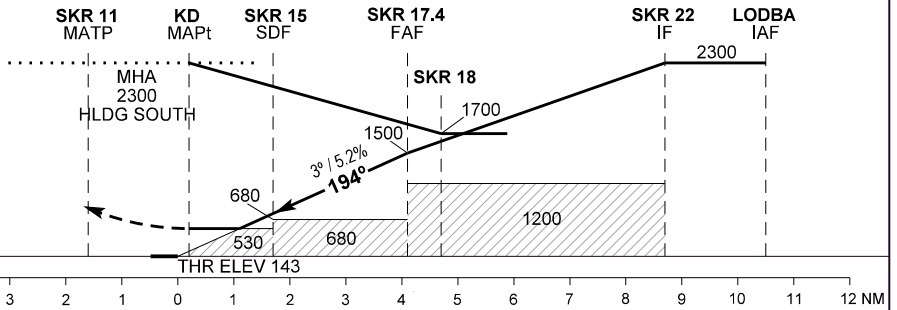
Skrydstrup APP : 124.105 280.750
 Vamdrup Information : 118.655

**AD 2 - EKVD
 NDB RWY 19
 Kolding / Vamdrup**



TA 3000

Missed approach:
 Climb straight ahead to DME SKR 11 NM.
 Turn left and join KD HLDG SOUTH.



Changes : MAG VAR changed.

OCA (H)	A	B	SPECIAL CONDITIONS					
NDB	530 (390)	530 (390)						
Circling*	590 (450)	690 (550)	*East of aerodrome only					
GS	70	80	90	100	110	120	130	140
FAF - MAPt (3.9 NM)**	3:19	2:54	2:35	2:19	2:07	1:56	1:47	1:39
Rate of Descent	371	425	478	531	584	637	690	743
SKR DME NM	15.0	16.0	17.0					
DIST to THR 19 NM	1.7	2.7	3.7					
Altitude 3.0° Descent	735	1055	1375					

**Timing not authorized for defining the MAPt