

INSTRUMENT APPROACH CHART - ICAO

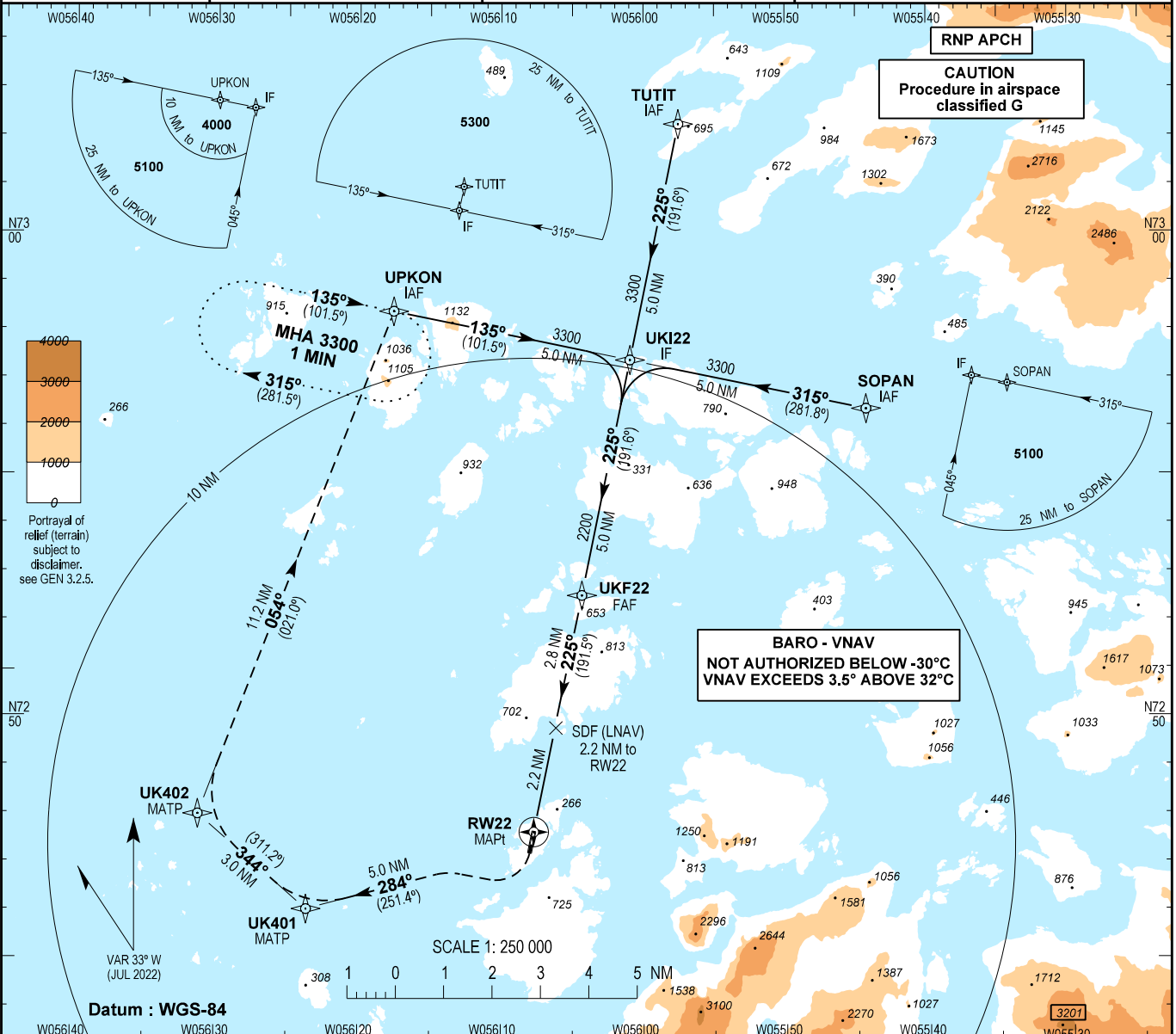
AD ELEV : 414

Bearings are magnetic (true)
ELEV, ALT and HGT in FT

Upervanik AFIS : 118.100

AD 2 - BGUK
RNP RWY 22 - 1
Upervanik

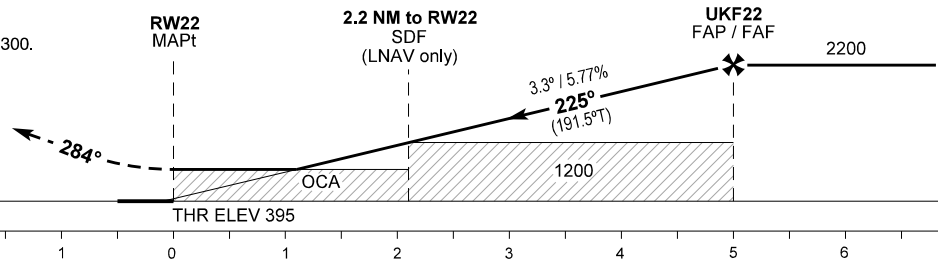
Changes: Missed approach changed. New MAPt, TAA, VAR and OCA (H) changed. Chart and RWY designators changed. WP UK401 and UK402 added. WP UK401 and UK402 added. WP identifiers changed due change of RWY designator.



TA 6000

Missed approach:
Turn right, climb on course 284°
to UK401, right turn to UK402.
Right turn to UPKON climbing to 3300.

No turn before MAPt



OCA (H)	A	B	SPECIAL CONDITIONS				DIST to RW22 NM	1.0	2.0	3.0	4.0
LNAV / VNAV	820 (425)	830 (435)	Beware of State minima for Upervanik according to AD 2.22 paragraph 3.1				Altitude 3.3° Descent	780	1150	1500	1850
LNAV	860 (465)	890 (495)	Beware of State minima for Upervanik according to AD 2.22 paragraph 3.2								
Circling*	970 (556)	1060 (646)	*West of aerodrome only								
Time to MAPt (RW22) from FAF (UKF22) - DIST 5.0 NM **							**Timing not authorized for defining the MAPt				
GS	KT	80	100	120	140	160					
Time	MIN:SEC	03:45	03:00	02:30	02:09	01:53					
ROD 3.3°/5.77%	FT/MIN	470	580	700	820	930					