

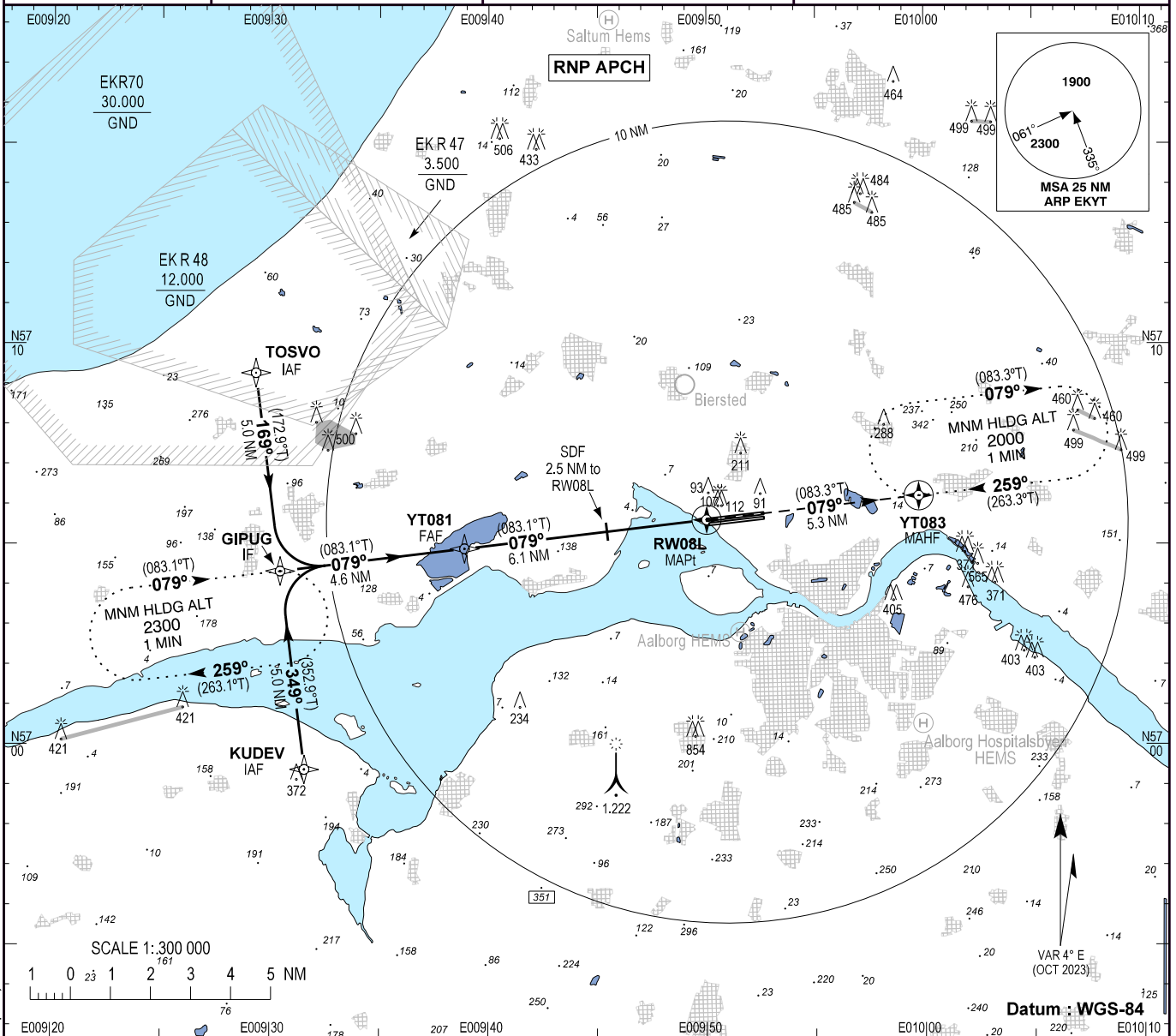
INSTRUMENT APPROACH CHART - ICAO

AD ELEV : 8

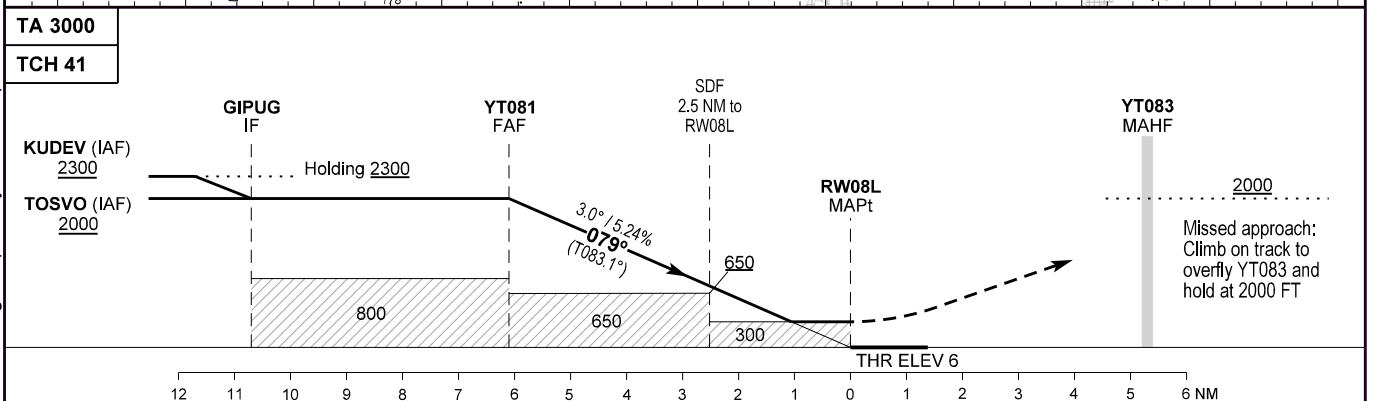
Bearings are magnetic (True)
ELEV, ALT and HGT in FT

Aalborg APP : 123.980 362.450
Aalborg TWR : 118.305 353.525
257.800
ATIS : 120.480

AD 2 - EKYT
RNP RWY 08L - 1
Aalborg (CIV / MIL)



Changes : New Aalborg Hospitalsbyen HEMS (Private Helipad) added.



OCA (H)	A	B	C	D
LNAV / VNAV*	223 (217)	236 (230)	253 (247)	273 (267)
LNAV**	300 (290)	310 (300)	330 (320)	350 (340)
Circling	510 (500)***	510 (500)***	690 (680)***	740 (730)***

Distance to RW08L	NM	6	5	4	3	2	1
Nominal altitude		1960	1650	1330	1010	690	370

SPECIAL CONDITIONS

- * Not to be used below -30°C
- ** Pass 2.5 NM before RW08L at MNM 650 FT
- *** N of RWY only

Note:
PAPI and RNP glidepath not coincident (PAPI TCH 50 FT, RNP TCH 41 FT)