

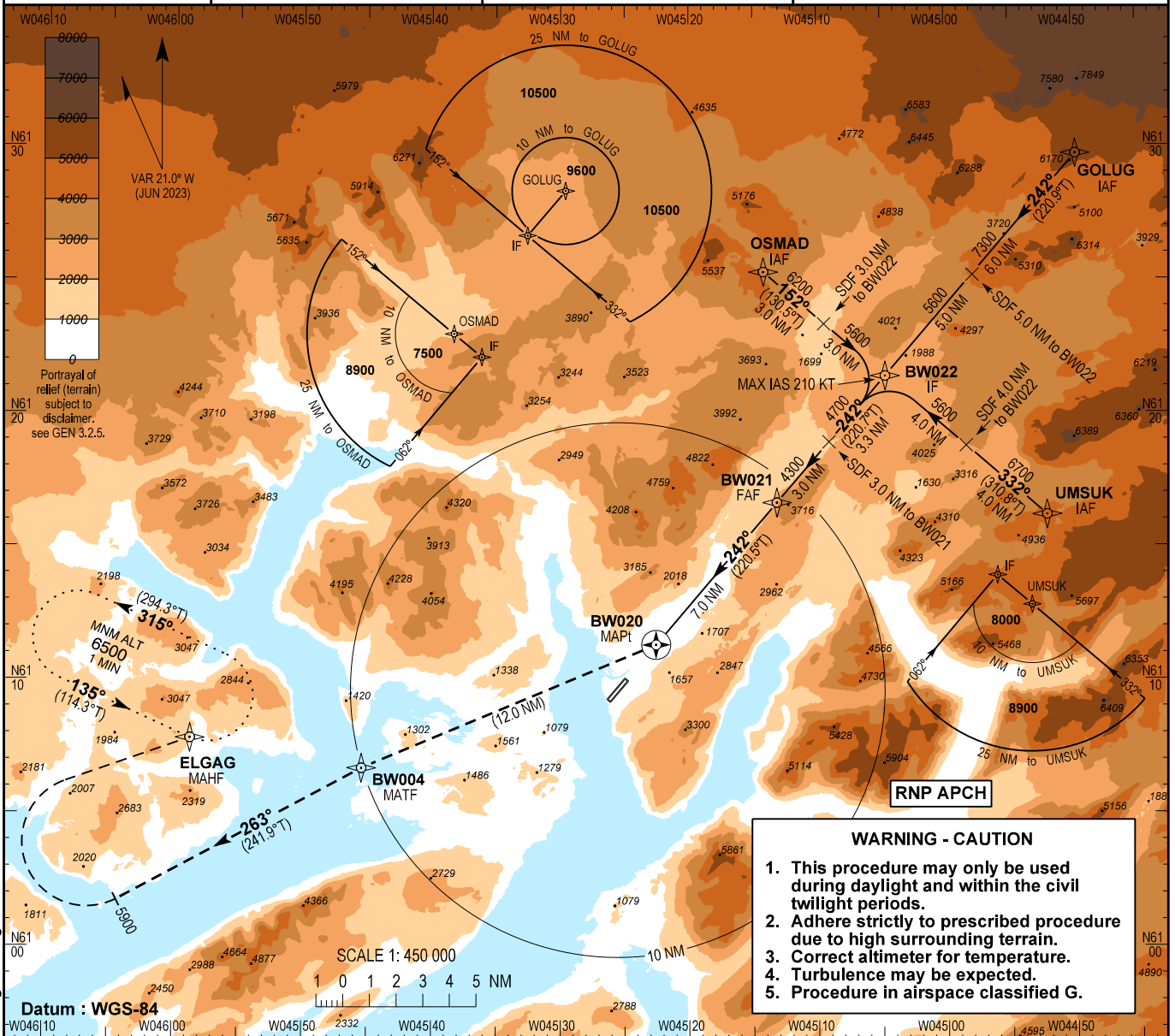
**INSTRUMENT APPROACH CHART - ICAO**

AD ELEV : 112

Bearings are magnetic (true)  
ELEV, ALT and HGT in FT

Narsarsuaq AFIS : 119.100

**AD 2 - BGBW  
RNP B - 1  
Narsarsuaq**

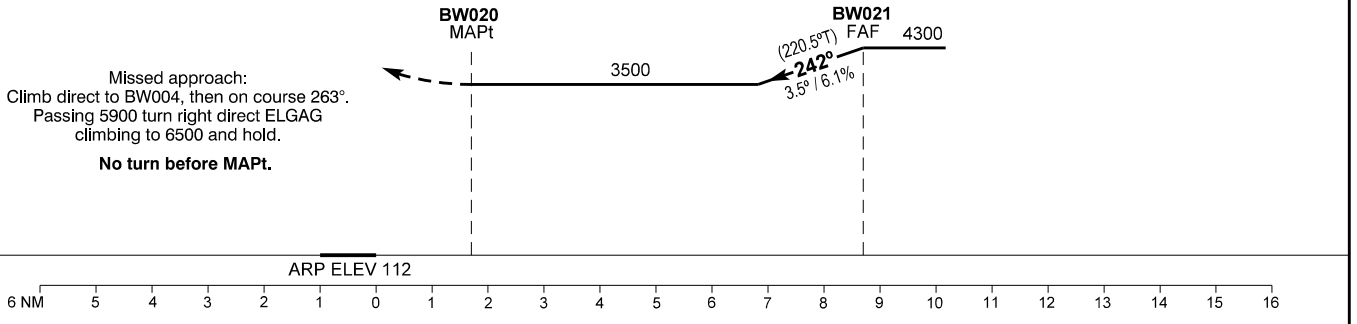


**WARNING - CAUTION**

1. This procedure may only be used during daylight and within the civil twilight periods.
2. Adhere strictly to prescribed procedure due to high surrounding terrain.
3. Correct altimeter for temperature.
4. Turbulence may be expected.
5. Procedure in airspace classified G.

Changes : Chart designator changed. VAR, tracks and bearings changed.

**TA 9000**



OCA (H)	C	Remarks
LNAV - Circling*	3500 (3388)	*Only north of aerodrome

DIST to BW020	NM	6.0	5.0
Altitude 3.5° descent		3925	3555

**Beware of State Minima for Narsarsuaq according to AD 2 - BGBW, paragraph 22, subparagraph 1.**

Time from FAF (BW021) to MAPt (BW020) - DIST 7.0 NM**							
GS	KT	100	120	140	160	180	200
Time	MIN:SEC	4:12	3:30	3:00	2:38	2:20	2:06
ROD 3.5°/6.1%	FT/MIN	620	745	865	990	1115	1240

\*\*Timing not authorized for defining the MAPt.