

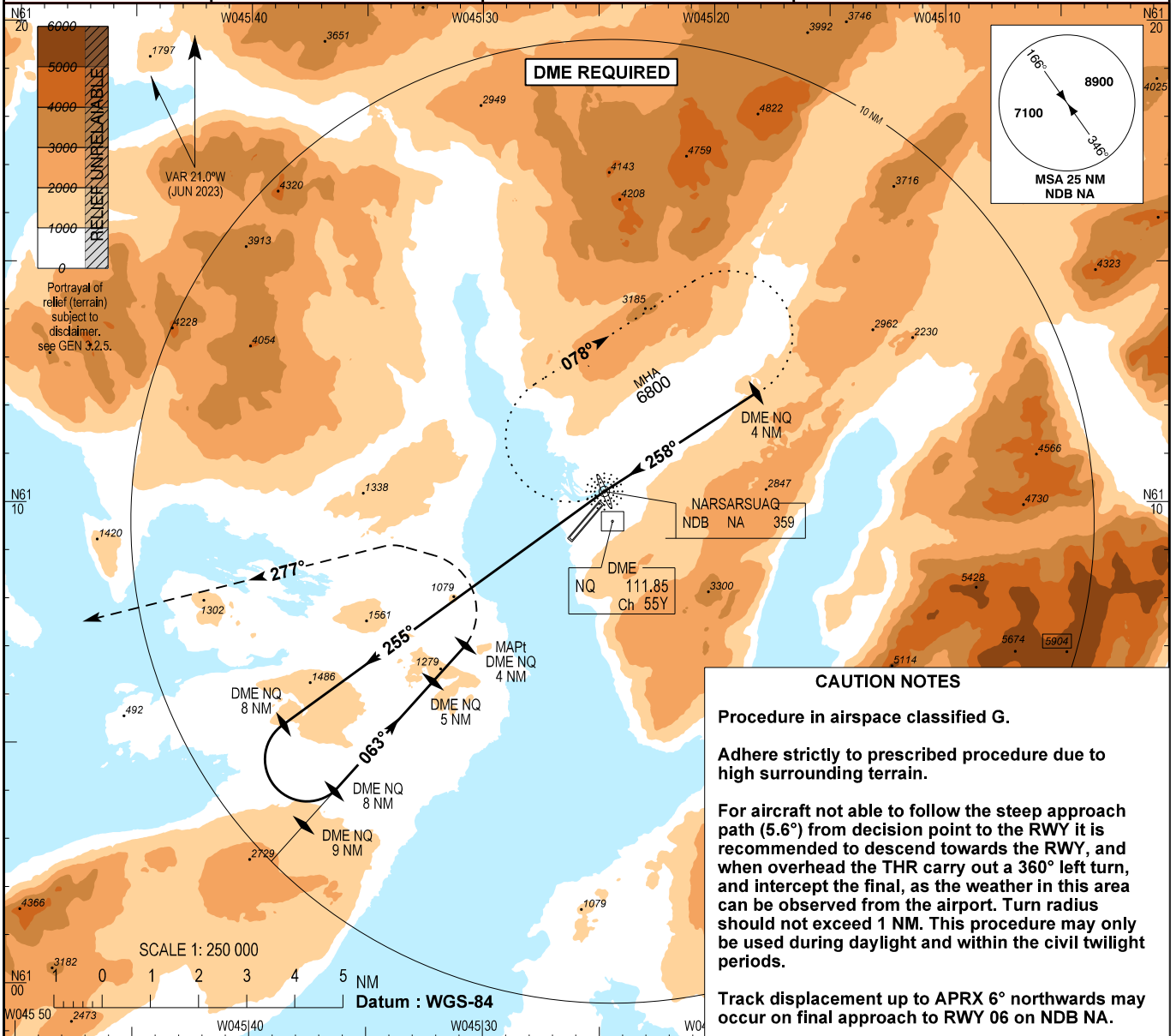
INSTRUMENT APPROACH CHART - ICAO

AD ELEV : 112

Bearings are magnetic
ELEV, ALT and HGT in FT

Narsarsuaq AFIS : 119.100

AD 2 - BGBW
NDB Y RWY 06
Narsarsuaq



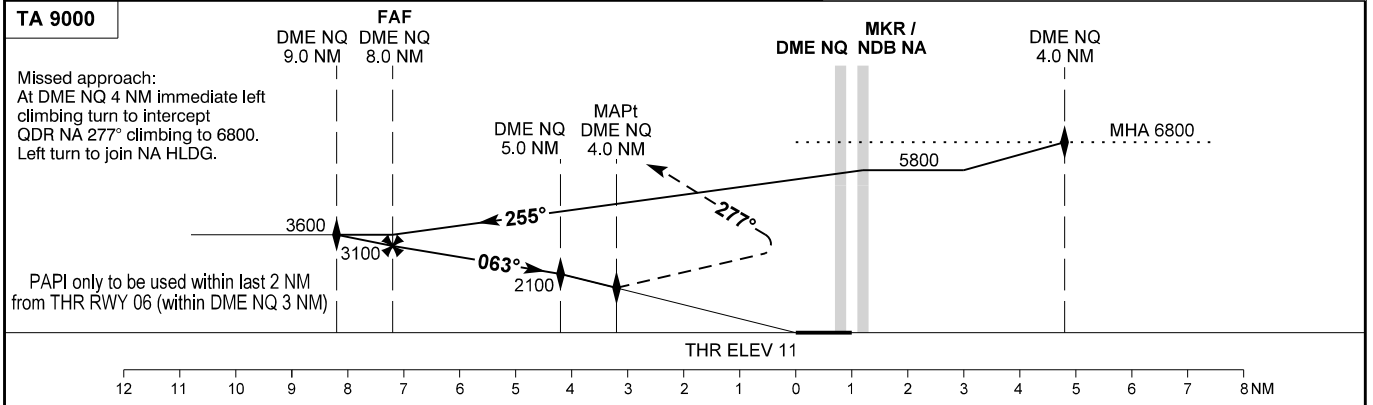
CAUTION NOTES

Procedure in airspace classified G.

Adhere strictly to prescribed procedure due to high surrounding terrain.

For aircraft not able to follow the steep approach path (5.6°) from decision point to the RWY it is recommended to descend towards the RWY, and when overhead the THR carry out a 360° left turn, and intercept the final, as the weather in this area can be observed from the airport. Turn radius should not exceed 1 NM. This procedure may only be used during daylight and within the civil twilight periods.

Track displacement up to APRX 6° northwards may occur on final approach to RWY 06 on NDB NA.



OCA (H)	A	B
Straight in	1800 (1789)	1800 (1789)
Circling	1800 (1688)	2400 (2288)

SPECIAL CONDITIONS

MAX missed APCH turning speed 130 KT IAS.
Circling N of RWY only. If visual contact is lost during visual circling : Intercept and follow QDR NA 277° as soon as possible climbing to 6800, then turn left and join NA HLDG.

DME NQ	1.0	2.0	3.0	4.0	5.0	6.0	7.0	8.0	9.0
DIST to THR 06	0	1	2	3	4	5	6	7	8
ALT	60	600	1200	1800	2100	2430	2760	3100	3600

State Minima : AD 2 - BGBW - 5

Changes : Editorial.