

**INSTRUMENT  
APPROACH  
CHART - ICAO**

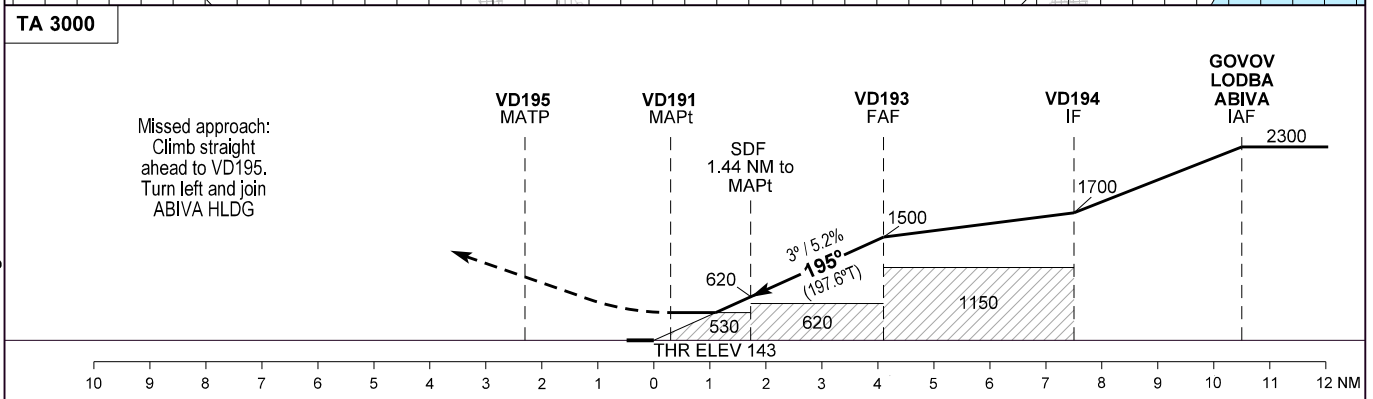
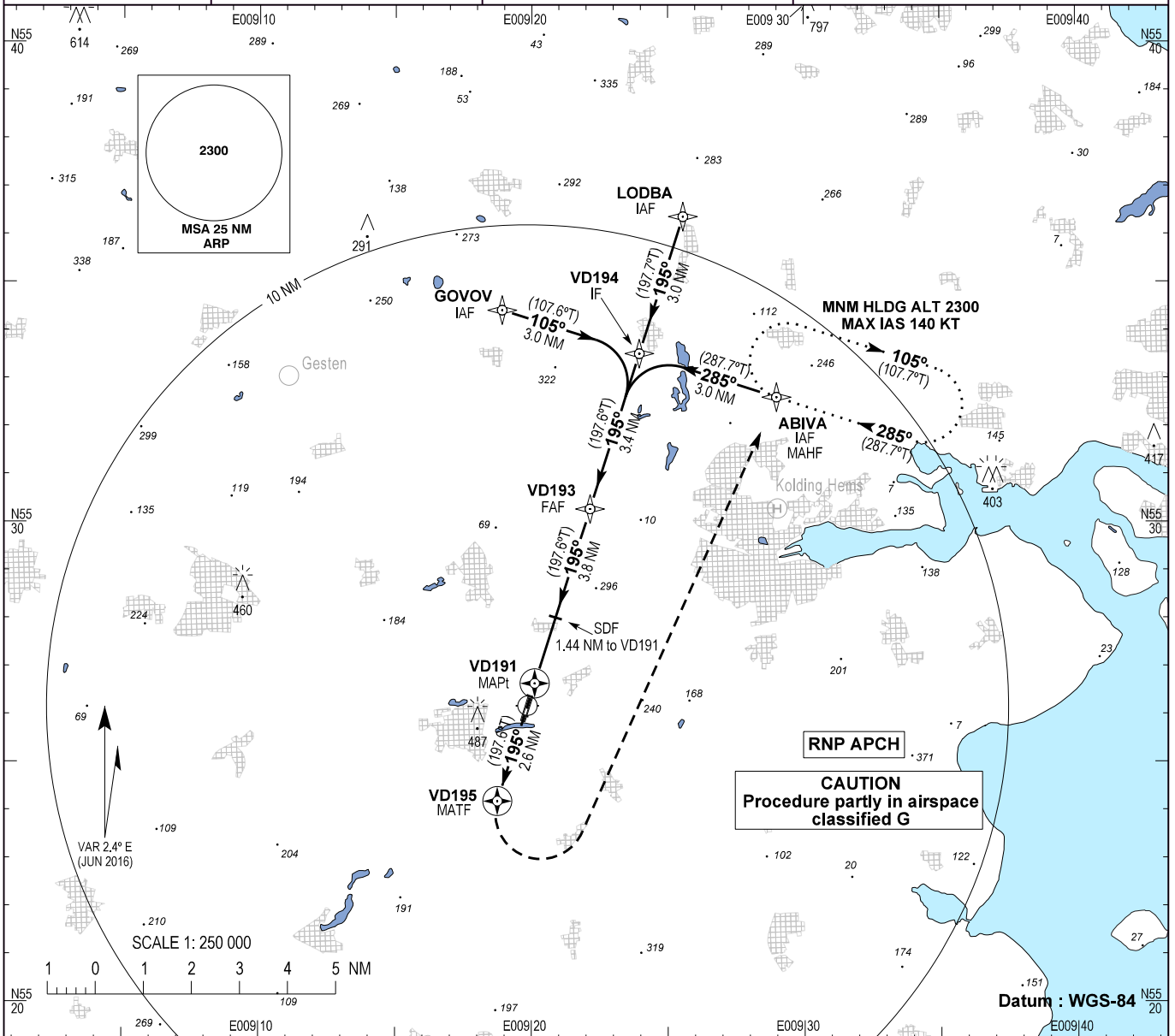
AD ELEV : 143

Bearings are magnetic (true)  
ELEV, ALT and HGT in FT

Skrydstrup APP : 124.100 300.075

Vamdrup Information : 120.500

**AD 2 - EKVD  
RNP RWY 19 - 1  
Kolding / Vamdrup**



OCA (H)	A		B		SPECIAL CONDITIONS				
	530 (390)	530 (390)	690 (550)	690 (550)	*East of aerodrome only				
GS	70	80	90	100	110	120	130	140	
VD193-VD191 (3.82 NM)**	3:16	2:52	2:33	2:17	2:05	1:55	1:46	1:38	**Timing not authorized for defining the MAPt
Rate of Descent	371	425	478	531	584	637	690	743	
DIST to VD191	NM	1.0	2.0	3.0					
DIST to THR 19	NM	1.3	2.3	3.3					
Altitude 3.0° Descent		600	920	1240					

Changes : Chart name changed.