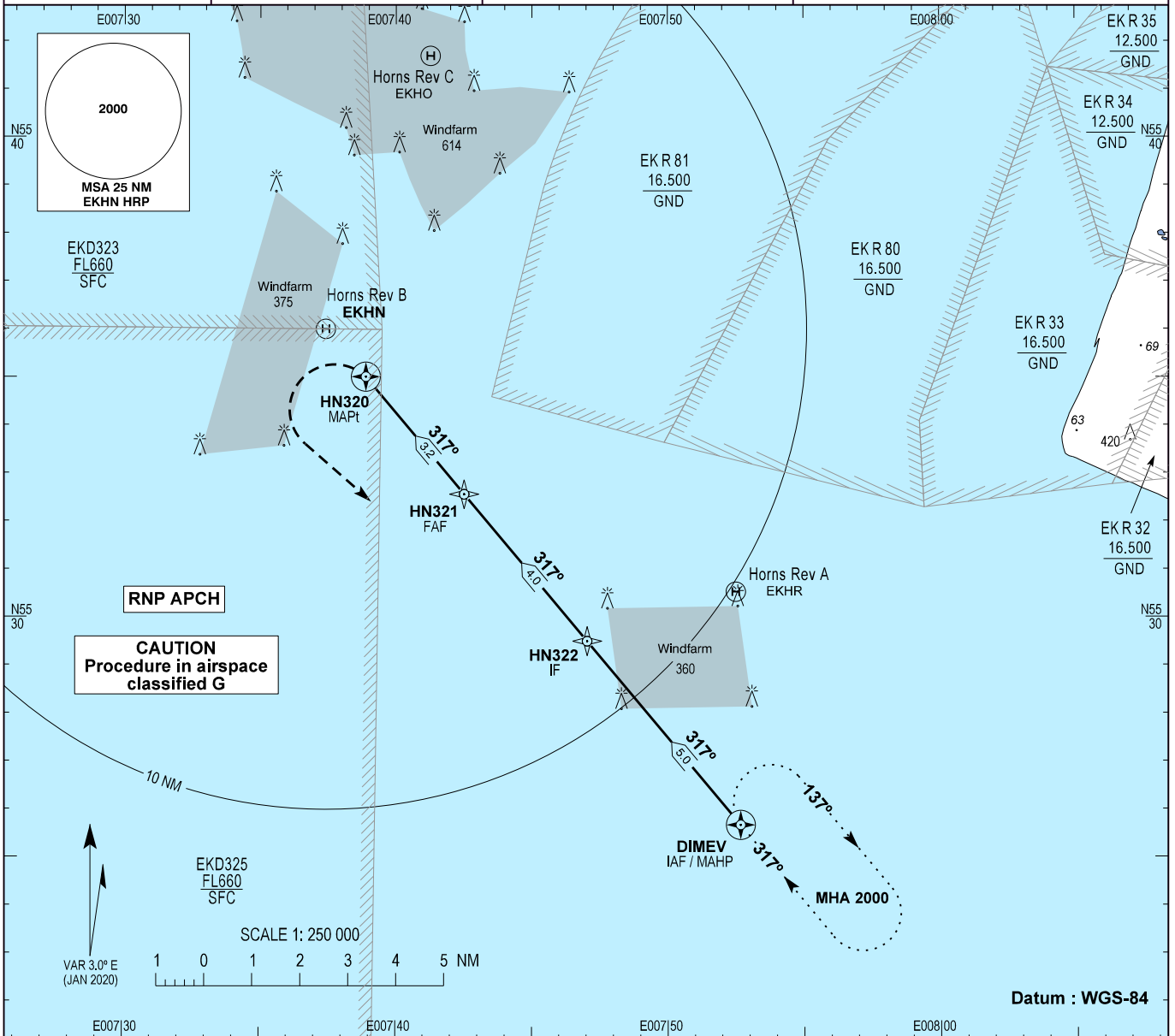


INSTRUMENT APPROACH CHART - ICAO

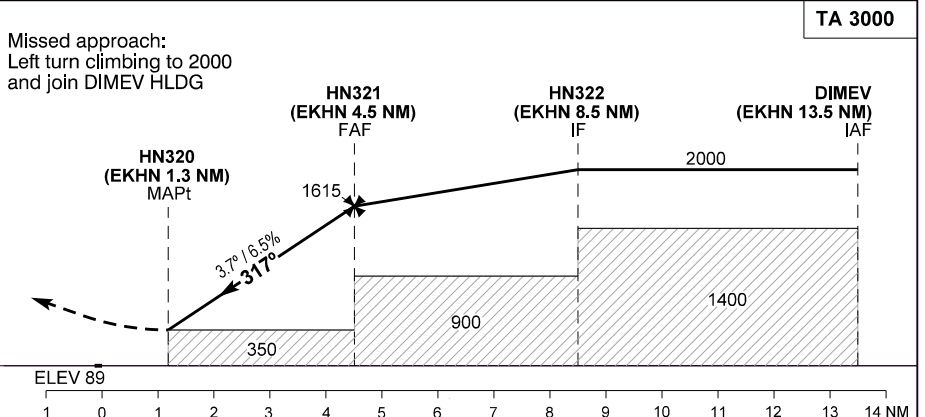
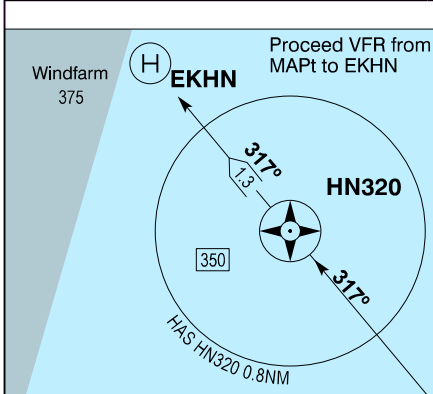
Heliport ELEV : 89
 Bearings are magnetic
 ELEV, ALT and HGT in FT
 DIST in NM

ATIS : 122.075
 Esbjerg Information : 120.155
 Billund Approach : 127.580
 Copenhagen Information : 124.000

AD 2 - EKEB
EKHN RNP 317 - 1
Esbjerg



Change : EK D 301 withdrawn. EK D 323 and EK D 325 added.



OCA (H)	H
LNAV 9.5% *	350 (261)
LNAV 4.2% *	440 (351)

* MNM missed approach climb gradient.

DIST to MAPt	0.5	1.0	1.5	2.0	2.5	3.0
ALT	545	745	940	1140	1335	1535

GS	KT	70	80	90	100	110	120	130
ROD	FT / MIN	460	530	595	660	725	790	855

NAVIAR

AIRAC AMDT 05/25 - 15 MAY 25