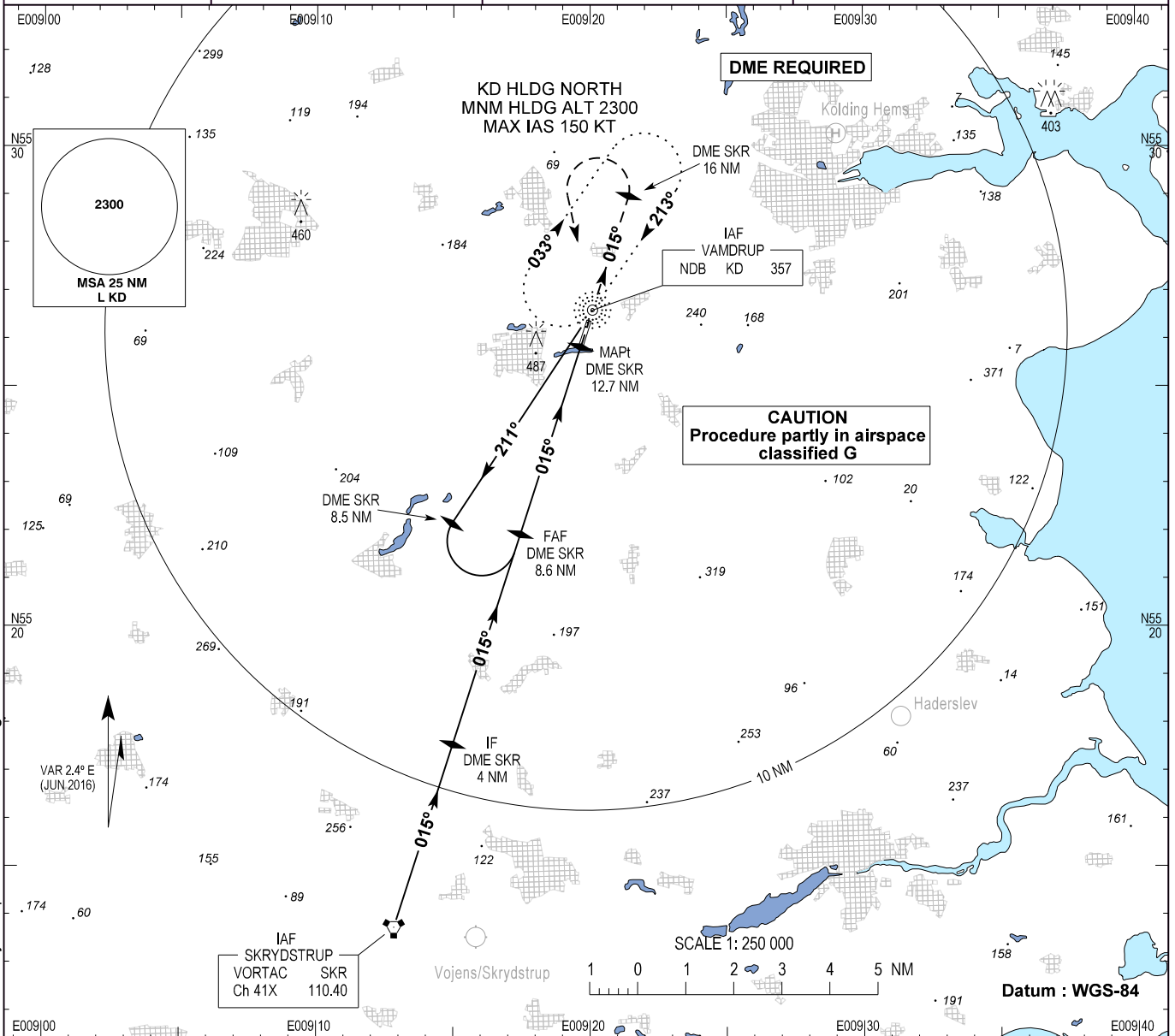


INSTRUMENT APPROACH CHART - ICAO

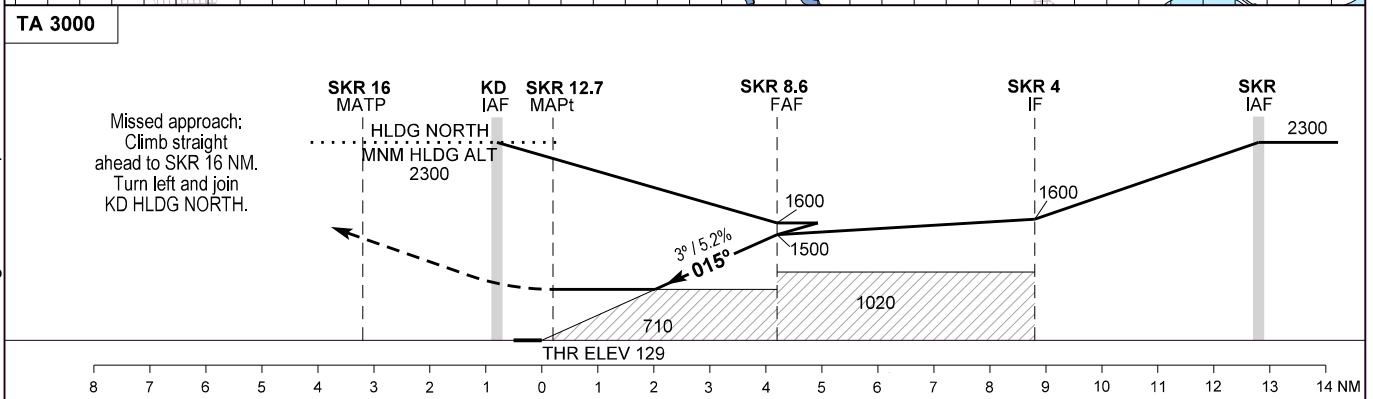
AD ELEV : 141
 Bearings are magnetic
 ELEV, ALT and HGT in FT

Skrydstrup APP : 124.100 315.100
 Vamdrup Information : 118.650

AD 2 - EKVD
 NDB RWY 01
 Kolding / Vamdrup



Changes : AD ELEV changed. Vamdrup Information FREQ and Skrydstrup APP UHF FREQ changed.



OCA (H)	A	B	SPECIAL CONDITIONS					
NDB	710 (580)	710 (580)						
Circling*	710 (570)	710 (570)	*East of AD only					
GS	70	80	90	100	110	120	130	140
FAF - MAPt (3.6 NM)**	3:08	2:45	2:26	2:12	2:00	1:50	1:41	1:34
Rate of Descent	425	486	546	608	668	729	790	851
SKR DME NM	11.0	10.0						
Altitude 3.0° Descent	821	1185						

**Timing not authorized for defining the MAPt